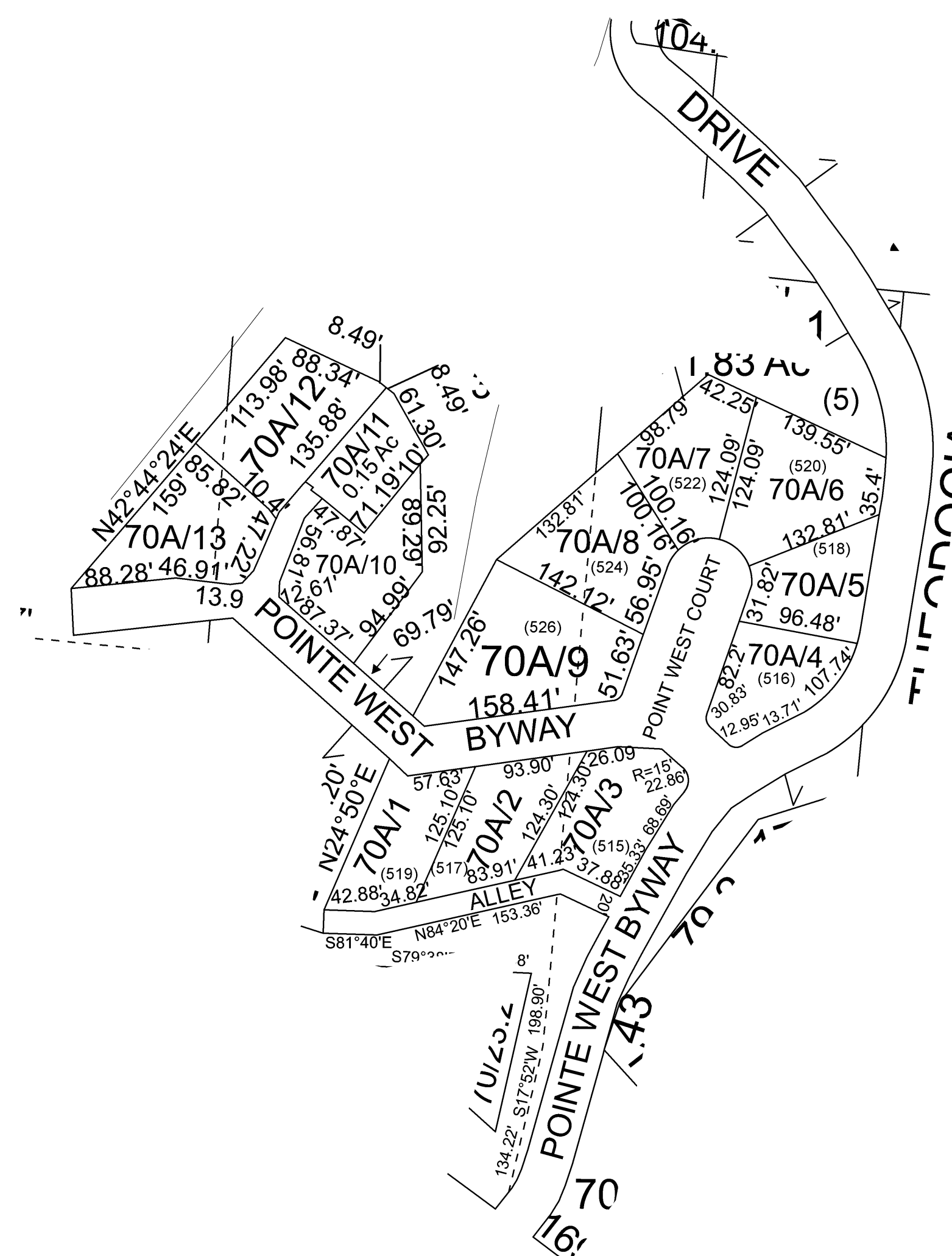


Lubeck - 70A



For Tax Purposes Only this is not Authoritative Data
 7.5.c.6 RESTRICTIONS
 ALL FINISHED TAX MAPS CREATED UNDER THE PROVISIONS OF LEGISLATION ARE THE PROPERTY OF THE COUNTY ASSESSORS WHO CREATED THEM AND THE REPRODUCTION, COPYING, DISTRIBUTION, SALE OR LEASE OF SUCH TAX MAPS OR COPIES THEREOF WITHOUT THE WRITTEN PERMISSION OF THE RESPECTIVE COUNTY ASSESSOR IS PROHIBITED BY LAW

70	70	70
70	70A	70
70	70	70

Prepared by: RDS

Legend		
--- Previous Deed	Deed lot Number (15)	□ District Lines
— Property	MAP / Parcel Number 19/25	†† CEMT.
— Railroad Right of Way	District Number 10	□ LIBRARY
— Road and Railroad RW	HOSPITAL	✈ AIRPORT
- - - Road Easement	POST OFFICE	
— Road Right of Way	SCHOOL	☒ CHURCH

Revisions		
1	7	13
2	8	14
3	9	15
4	10	16
5	11	17
6	12	18

WOOD COUNTY
 STATE OF WEST VIRGINIA
 Office of Assessor

District	SUBDIVISION
LUBECK	POINTE WEST PH III & IV
SHEET NO: 70A	
Date, Aerial Photography: 2003	Date, Map: Nov 08, 2011
Scale: 1" = 100'	