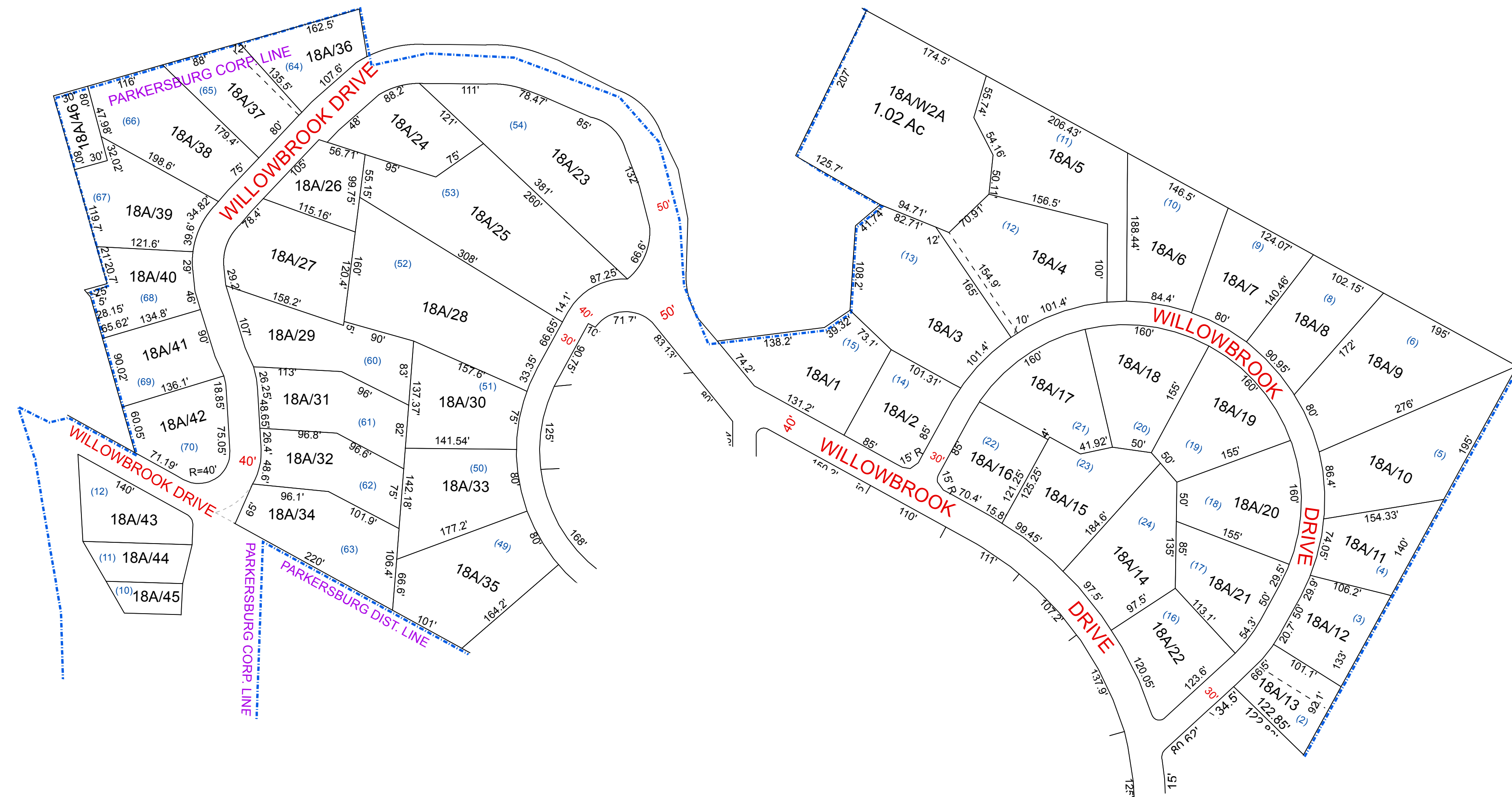


PARKERSBURG CITY - 18A



For Tax Purposes Only this is not Authoritative Data			Legend			Revisions						WOOD COUNTY STATE OF WEST VIRGINIA  Office of Assessor			CORPERATION: CITY OF PARKERSBURG											
7.8.C.6 RESTRICTIONS ALL FINISHED TAX MAPS CREATED UNDER THE PROVISIONS OF LEGISLATION ARE THE PROPERTY OF THE COUNTY ASSESSOR WHO CREATED THEM AND THE REPRODUCTION, COPYING, DISTRIBUTION, SALE OR LEASE OF SUCH TAX MAPS OR COPIES THEREOF WITHOUT THE WRITTEN PERMISSION OF THE RESPECTIVE COUNTY ASSESSOR IS PROHIBITED BY LAW			1925 MAP / Parcel Number 05 District Number HOSPITAL POST OFFICE SCHOOL			District Lines CEMT. LIBRARY AIRPORT CHURCH FIRE STATION									SHEET NO: 18A											
Prepared by:RDS															Date, Map: May 28, 2013 Scale: 1" = 100'											
46	100	100	19	18A	150	19	101	150	1	7	13	2	8	14	3	9	15	4	10	16	5	11	17	6	12	18