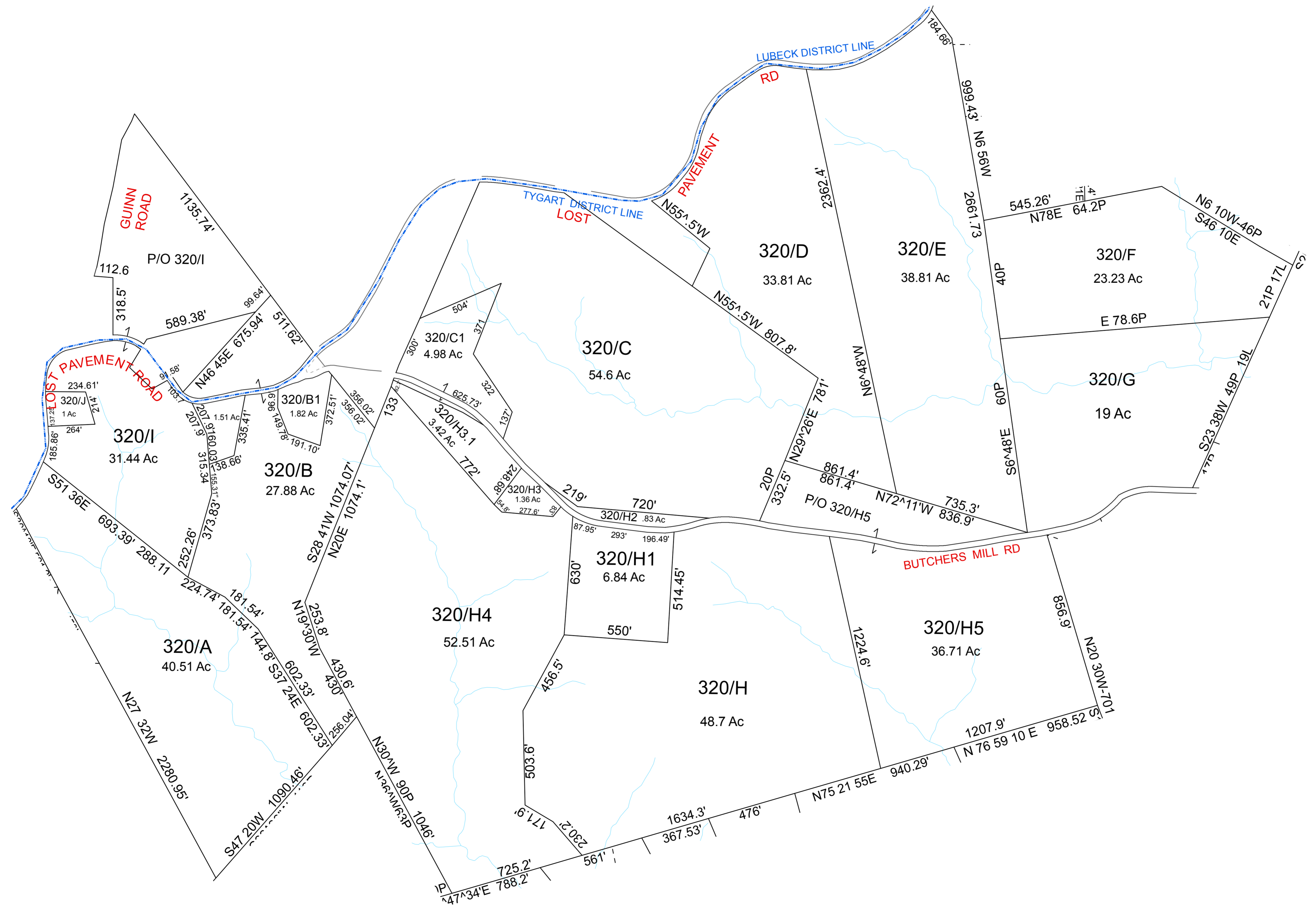


**TYGART-320**



For Tax Purposes Only This is not Authoritative Data  
 ALL FINISHED TAX MAPS CREATED UNDER THE PROVISIONS OF LEGISLATION ARE THE PROPERTY OF THE COUNTY ASSESSORS WHO CREATED THEM AND THE REPRODUCTION, COPYING, DISTRIBUTION, SALE OR LEASE OF SUCH TAX MAPS OR COPIES THEREOF WITHOUT THE WRITTEN PERMISSION OF THE RESPECTIVE COUNTY ASSESSOR IS PROHIBITED BY LAW

550	520	260
370	320	270
370	3800	

Prepared by: RDS

Legend	
	Deed lot Number (15)
	MAP / Parcel Number 19/25
	District Number 08
	HOSPITAL
	POST OFFICE
	SCHOOL
	District Lines
	CEMT.
	LIBRARY
	AIRPORT
	CHURCH

Revisions			
1		7	13
2		8	14
3		9	15
4		10	16
5		11	17
6		12	18

**WOOD COUNTY**  
 STATE OF WEST VIRGINIA  
 Office of Assessor

District_08	Sub/Division
<b>TYGART</b>	
<b>SHEET NO: 320</b>	
Date Aerial Photography: 2003	Date Map: _____
Photo No: _____	Scale: 1" = 300'