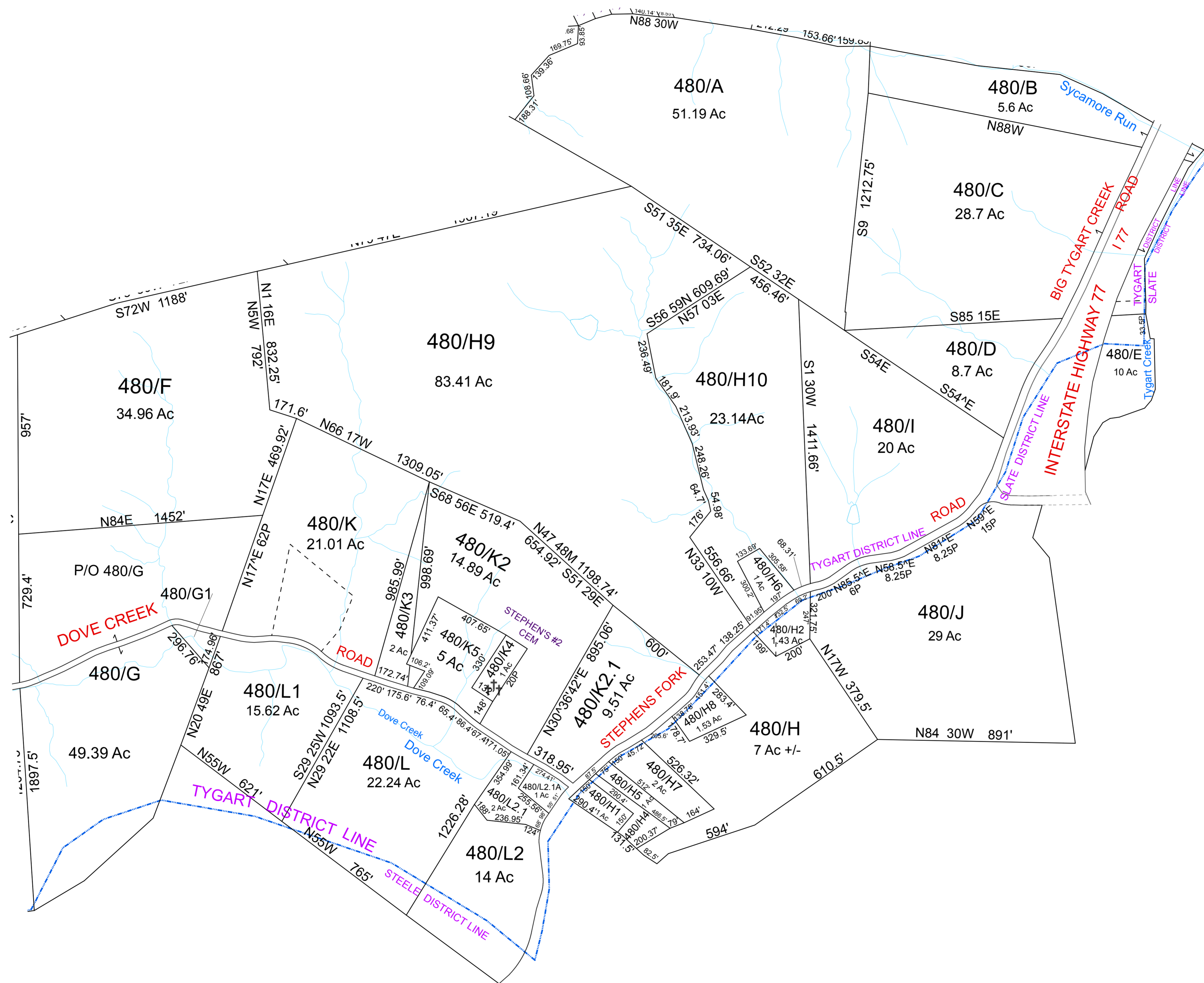


TYGART-480



For Tax Purposes Only This is not Authoritative Data
 ALL FINISHED TAX MAPS CREATED UNDER THE PROVISIONS OF LEGISLATION ARE THE PROPERTY OF THE COUNTY ASSESSORS WHO CREATED THEM AND THE REPRODUCTION, COPYING, DISTRIBUTION, SALE OR LEASE OF SUCH TAX MAPS OR COPIES THEREOF WITHOUT THE WRITTEN PERMISSION OF THE RESPECTIVE COUNTY ASSESSOR IS PROHIBITED BY LAW

450	450	250
470	480	250
470	1000	

Prepared by: RDS

Legend	
	Deed lot Number (15)
	MAP / Parcel Number 19/25
	District Number 08
	HOSPITAL
	POST OFFICE
	SCHOOL
	District Lines
	CEMET.
	LIBRARY
	AIRPORT
	CHURCH

Revisions	
1	7
2	8
3	9
4	10
5	11
6	12
	13
	14
	15
	16
	17
	18

WOOD COUNTY
 STATE OF WEST VIRGINIA
 Office of Assessor

District_08 Sub/Division
TYGART
 SHEET NO: 480
 Date Aerial Photography: 2003 Date Map: _____
 Photo No: _____ Scale: 1" = 300'