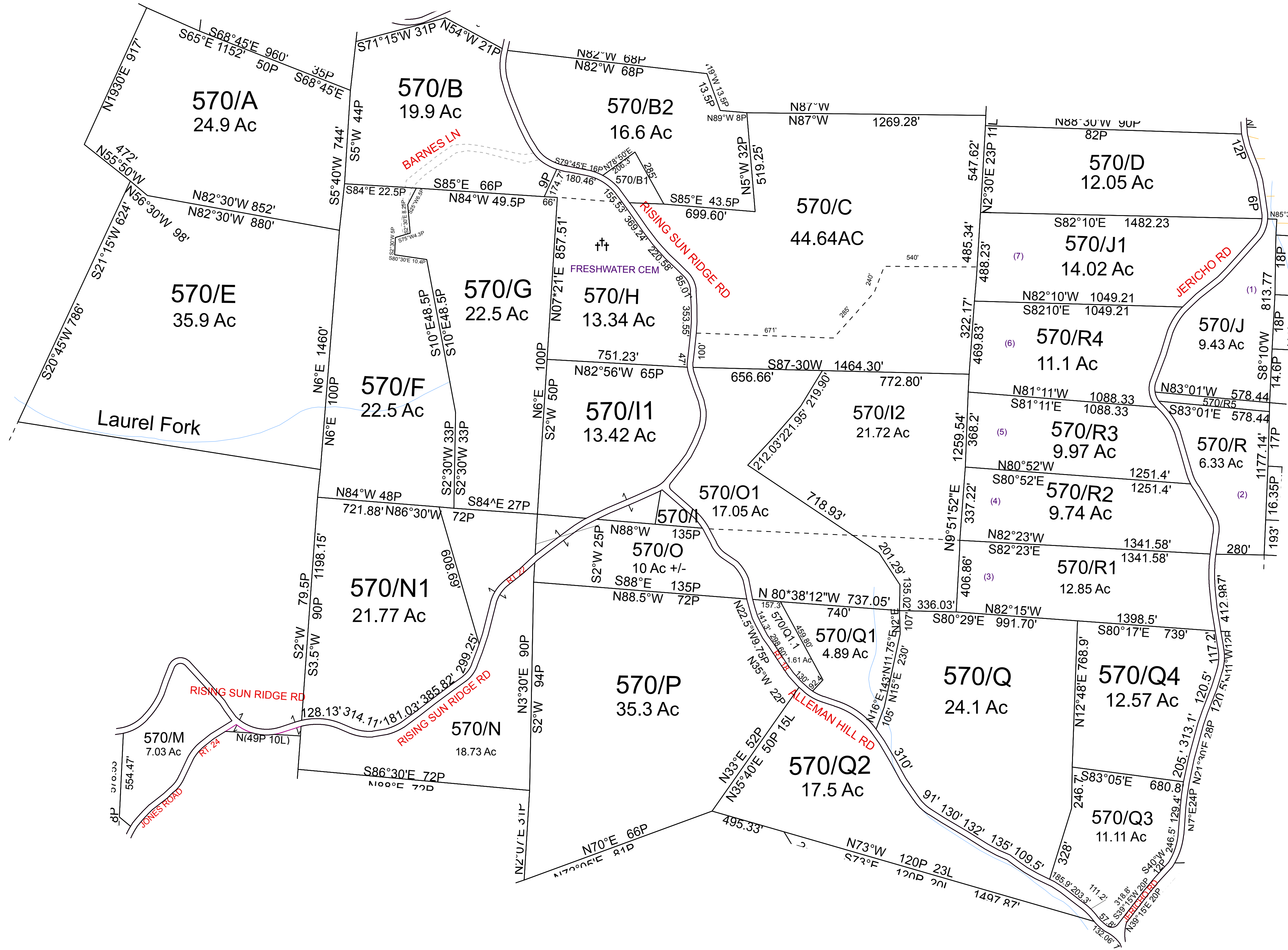


UNION - 570



For Tax Purposes Only This Is not Authoritative Data
 7.8.C.6 RESTRICTIONS
 ALL FINISHED TAX MAPS CREATED UNDER THE PROVISIONS OF LEGISLATION ARE THE PROPERTY OF THE COUNTY ASSESSORS WHO CREATED THEM AND THE REPRODUCTION, COPYING, DISTRIBUTION, SALE OR LEASE OF SUCH TAX MAPS OR COPIES THEREOF WITHOUT THE WRITTEN PERMISSION OF THE RESPECTIVE COUNTY ASSESSOR IS PROHIBITED BY LAW

490	500	580
560	570	580
610	620	630

Legend	
— Previous Deed	Deed lot Number (15)
— Property	MAP / Parcel Number 19/25
— Railroad Right of Way	District Number 09
— Road and Railroad RW	HOSPITAL
— Road Easement	POST OFFICE
— Road Right of Way	SCHOOL
— District Lines	CHURCH
†† CEMT.	
LIBRARY	
AIRPORT	

Revisions	
1	7
2	14
3	8
4	9
5	10
6	11
	12
	13
	14
	15
	16
	17
	18

WOOD COUNTY
 STATE OF WEST VIRGINIA
 Office of Assessor

District	9 - UNION
SHEET NO:	570
Date, Aerial Photography: 2003	Date, Map: May 28, 2013
Photo No:	Scale: 1" = 300'