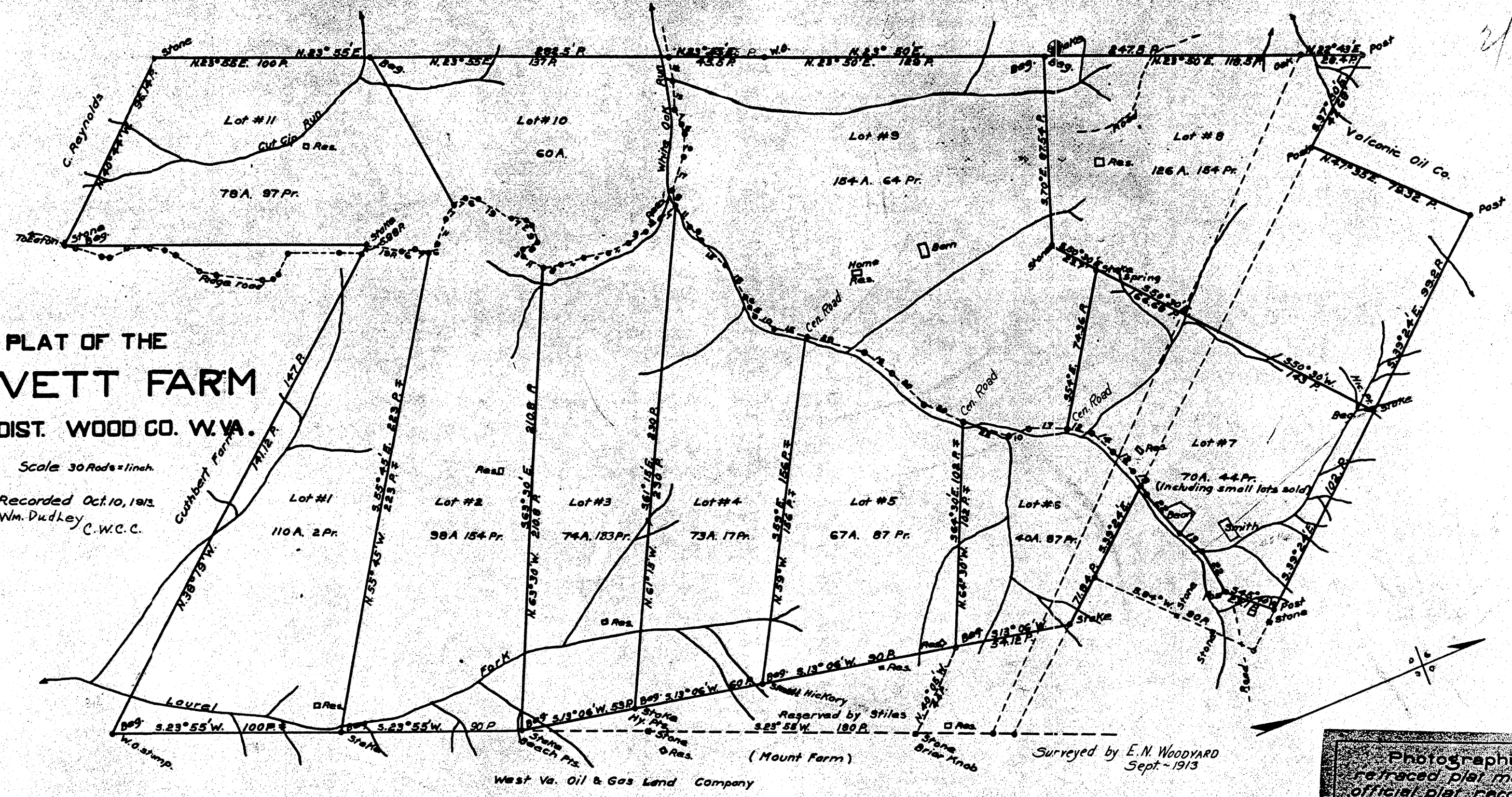


PLAT OF THE PREWETT FARM WALER DIST. WOOD CO. W. VA.

Scale 30 Rods = 1 inch
Recorded Oct. 10, 1913
Wm. Dudley C.W.C.C.

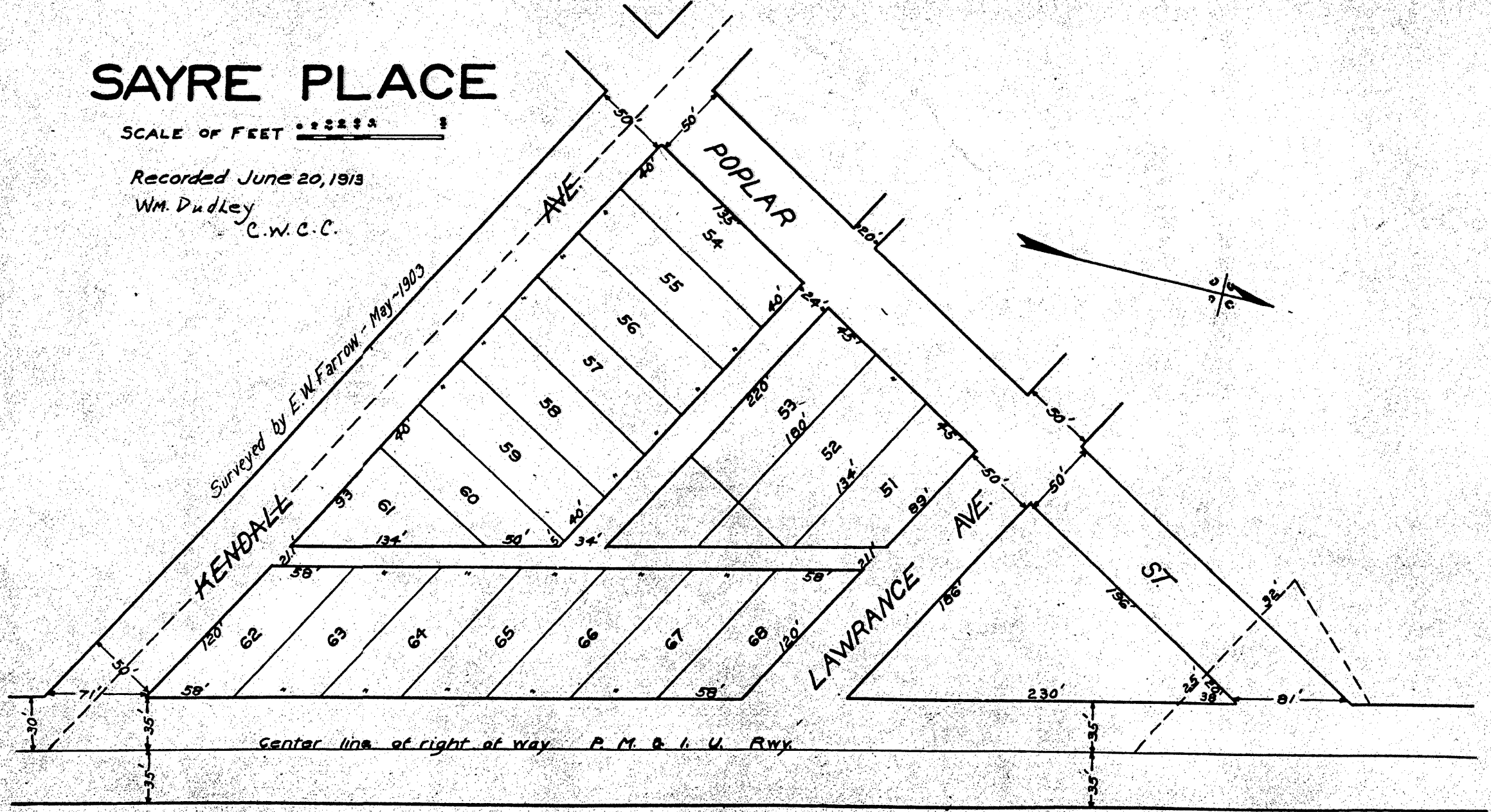


West Va. Oil & Gas Land Company
Surreyed by E.M. Woodyard
Sept-1913

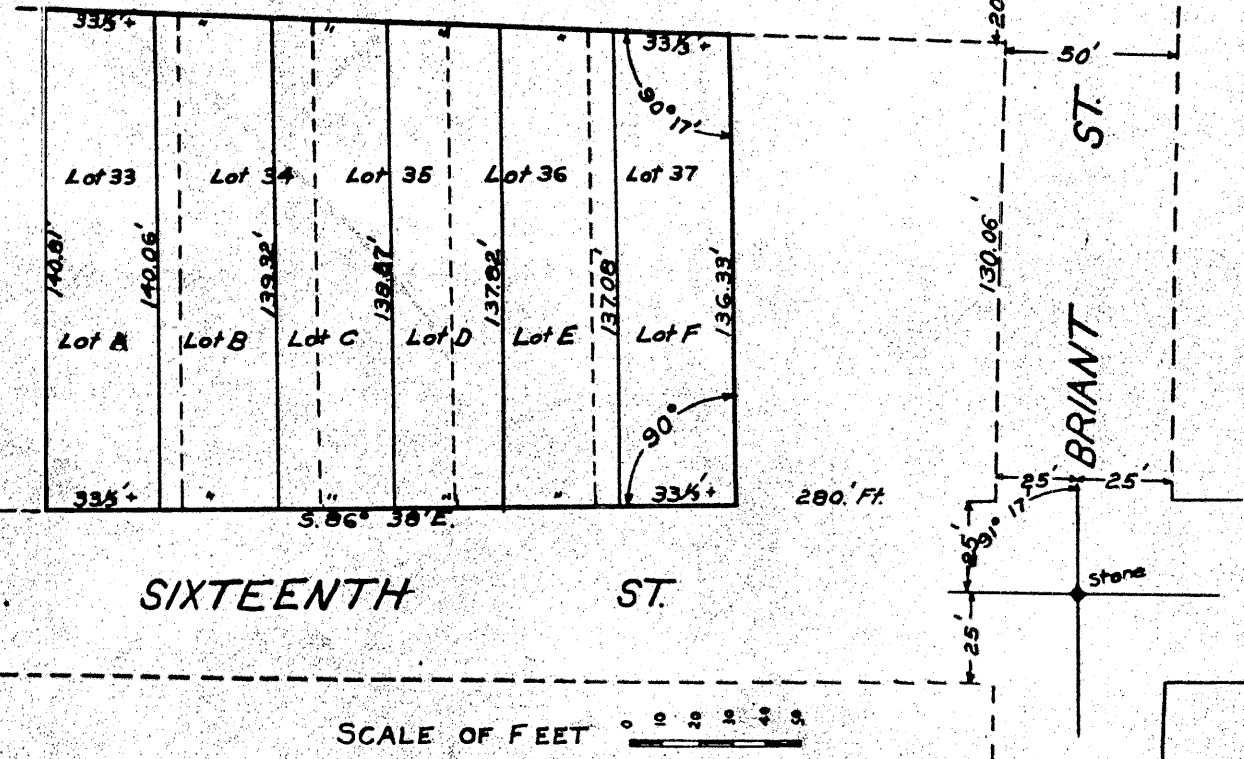
Photographic Copy of
re-traced plat made from the
official plat recorded in the
County Clerks Office- Plat
Book No. 2
E. G. Mott III, CIVIL ENGINEER
FARMERSBURG, W. VA.

SAYRE PLACE

SCALE OF FEET 1" = 200'
Recorded June 20, 1913
Wm. Dudley C.W.C.C.



Recorded Dec. 15, 1913
Wm. Dudley C.W.C.C.
R.G. Beckwith's Sub-Division of lots Nos. 33, 34, 35,
36 & 37 of Briant's Greenwood Addition
(see Plat B. No. 1 page 20)
Surreyed by E.M. Woodyard - Dec-1913



SCALE OF FEET 1" = 200'