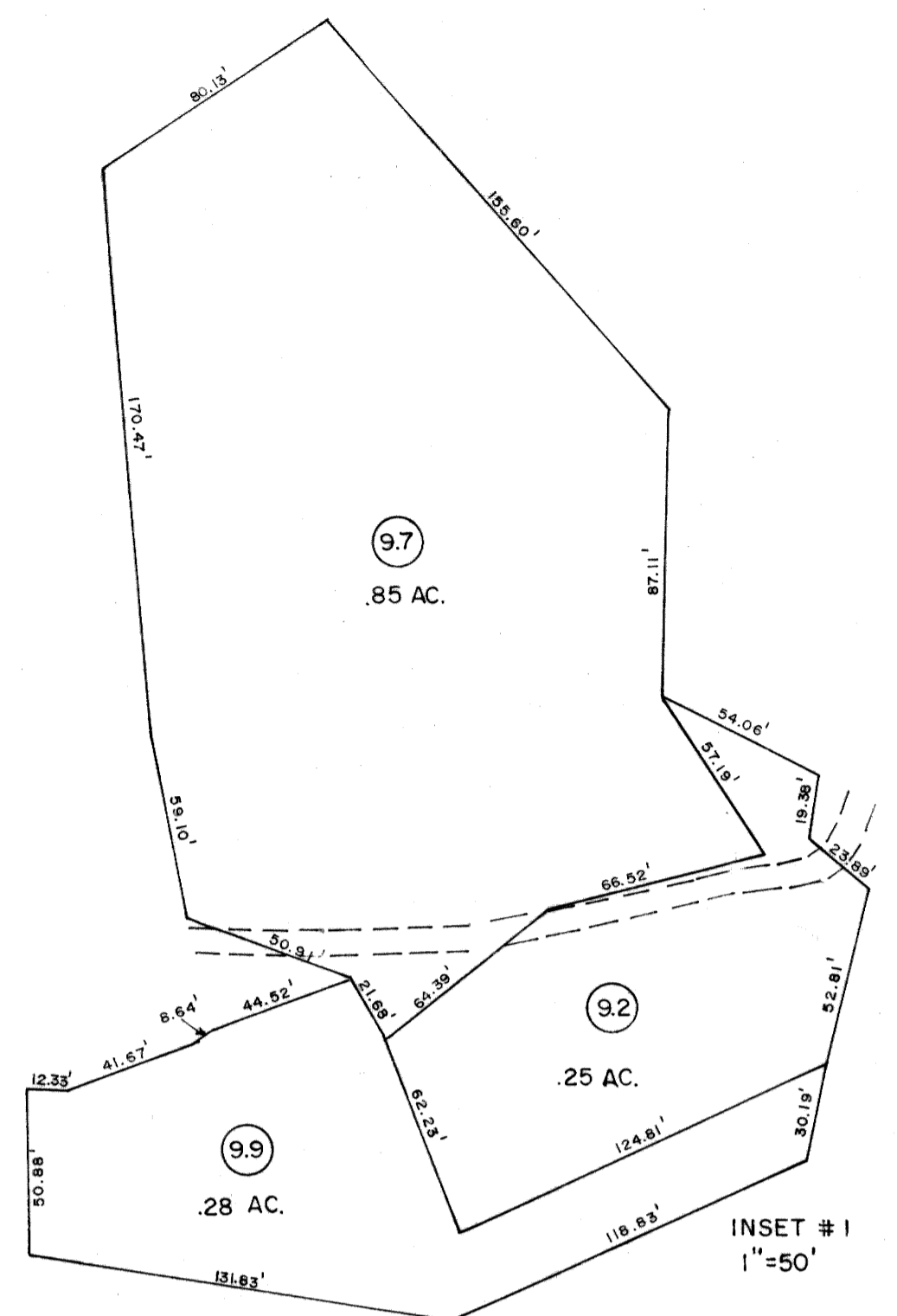
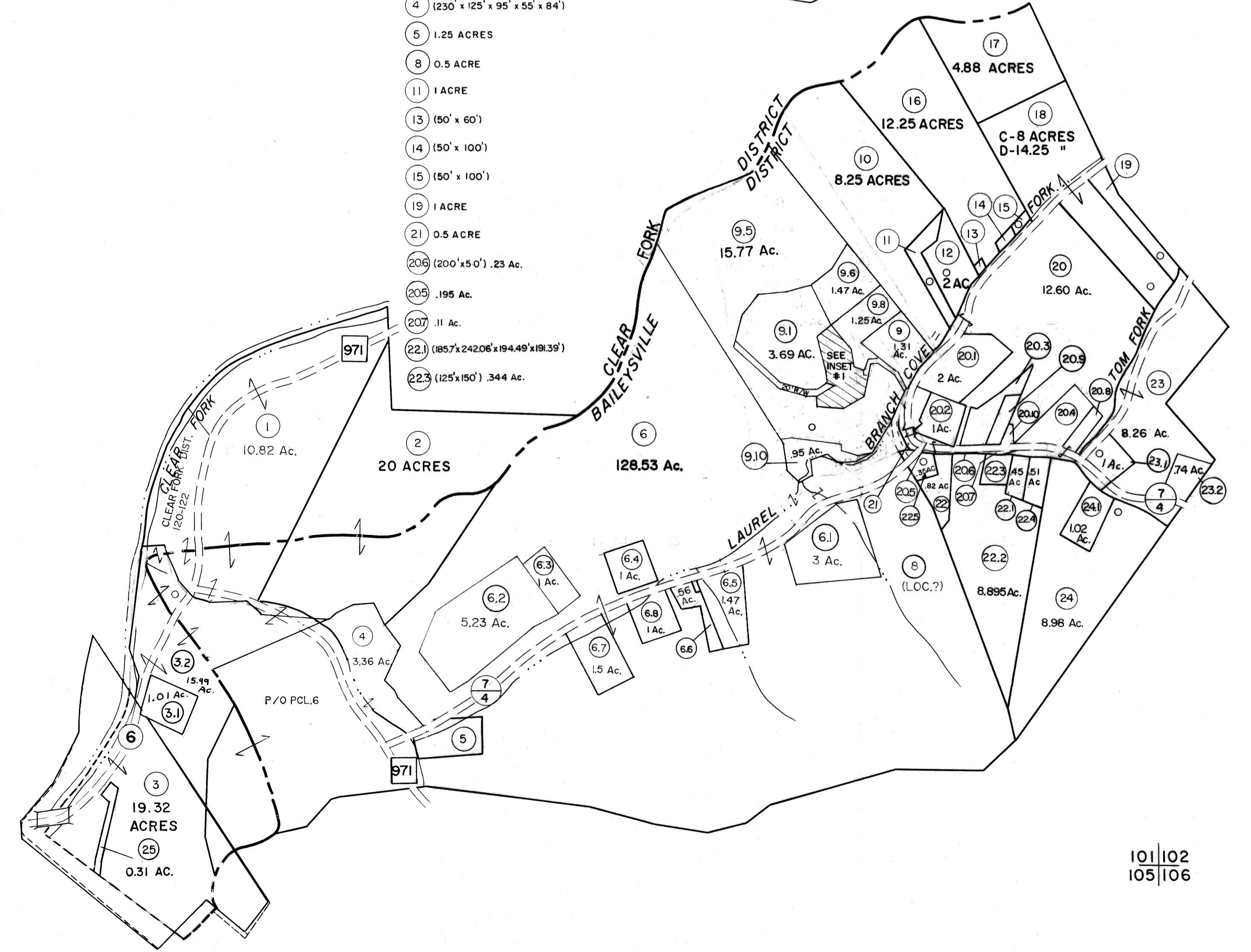


101

101|02



- 4 (230' x 125' x 95' x 55' x 84')
- 5 1.25 ACRES
- 8 0.5 ACRE
- 11 1 ACRE
- 13 (50' x 60')
- 14 (50' x 100')
- 15 (50' x 100')
- 19 1 ACRE
- 21 0.5 ACRE
- 206 (200' x 50') .23 Ac.
- 209 .195 Ac.
- 207 .11 Ac.
- 221 (857' x 242.06' x 194.49' x 191.39')
- 223 (125' x 150') .344 Ac.



101
104|105

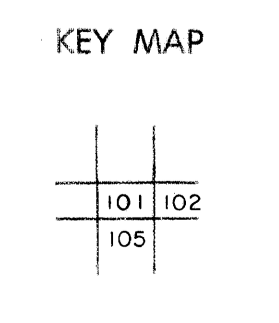
101|02
105|106

For Tax Purposes Only

Prepared by
MICHAEL BAKER, JR., INC.
Consulting Engineers
Rochester, Pennsylvania

Legend	
Property line	Original lot line
Edge of pavement or roadway	Deed lot number
Corporation line	Parcel or index number
District line	Improvement
County line	Railroad

Revisions					
1	3-1-64	9	OGIS	10/29/92	SAJ
2	2-21-75	10	OGIS	2/21/94	DSH
3	JULY 1981	11	OGIS	10/7/95	SAJ
4	Revised to July 83	12	SLS INC.	12/31/97	DSW
5	7/1/84	13	SLS INC.	11/12/98	DSW
6	Revised to 7-1-85	14	SLS INC.	1/21/00	DSW
7	REV. TO 7-1-87	15	ESI	2/5/02	REK
8	Revised to 7-1-88	16			



WYOMING COUNTY
STATE OF WEST VIRGINIA
Office of Assessor

DISTRICT
BAILEYSVILLE

SHEET NO: 101

Date, Aerial Photography: November, 1962 Date, Map: April, 1963
Photo No: Scale: 1" = 400'