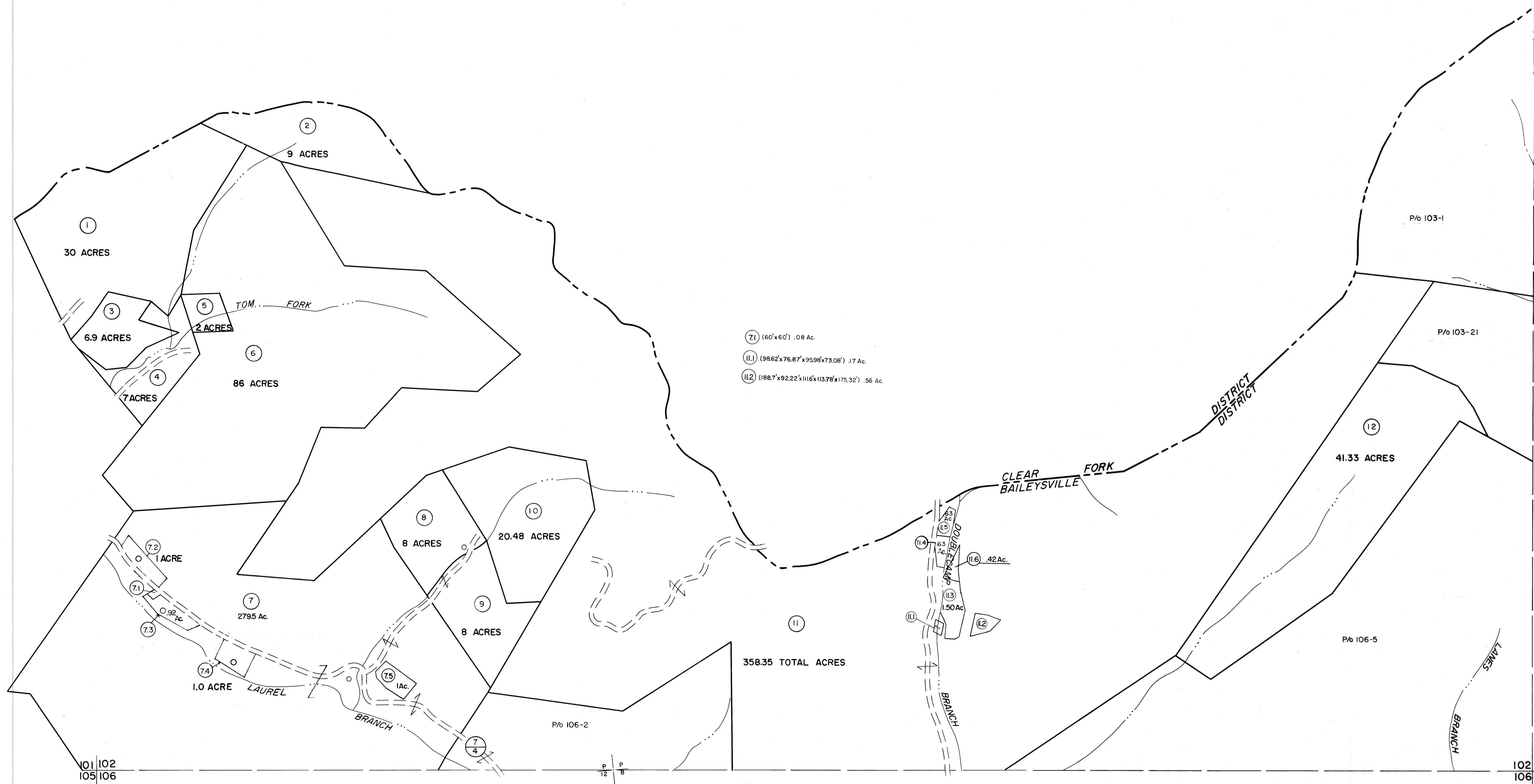
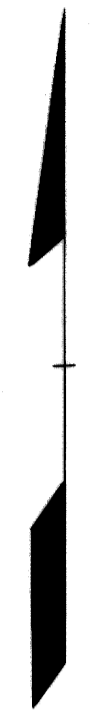


101|102

102|103

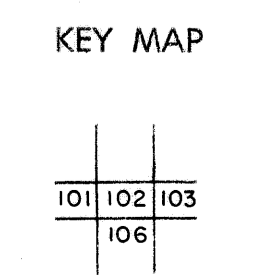


- (71) (60'x60') .08 Ac.
- (11) (9862'x76.87'x9596'x73.08') .17 Ac.
- (12) (188.7'x92.22'x111.6'x113.78'x175.32') .56 Ac.

For Tax Purposes Only  
 Prepared by  
**MICHAEL BAKER, JR., INC.**  
 Consulting Engineers  
 Rochester, Pennsylvania

Legend	
Property line	—————
Edge of pavement or roadway	—————
Corporation line	—————
District line	—————
County line	—————
Original lot line	-----
Deed lot number	(15)
Parcel or index number	(2)
Improvement	o
Railroad	—+—+—+—

Revisions	
1	3-1-64
2	JULY, 1961 TRL
3	Revised to July 83 C.M.
4	Revised to 7-1-85 SAJ
5	OGIS 10/7/95 SAJ
6	ESI 1/28/03 REK
7	
8	



**WYOMING COUNTY**  
 STATE OF WEST VIRGINIA  
 Office of Assessor

DISTRICT  
**BAILEYSVILLE**  
 SHEET NO: 102  
 Date, Aerial Photography: November, 1962 Date, Map: April, 1963  
 Photo No: Scale: 1" = 400'