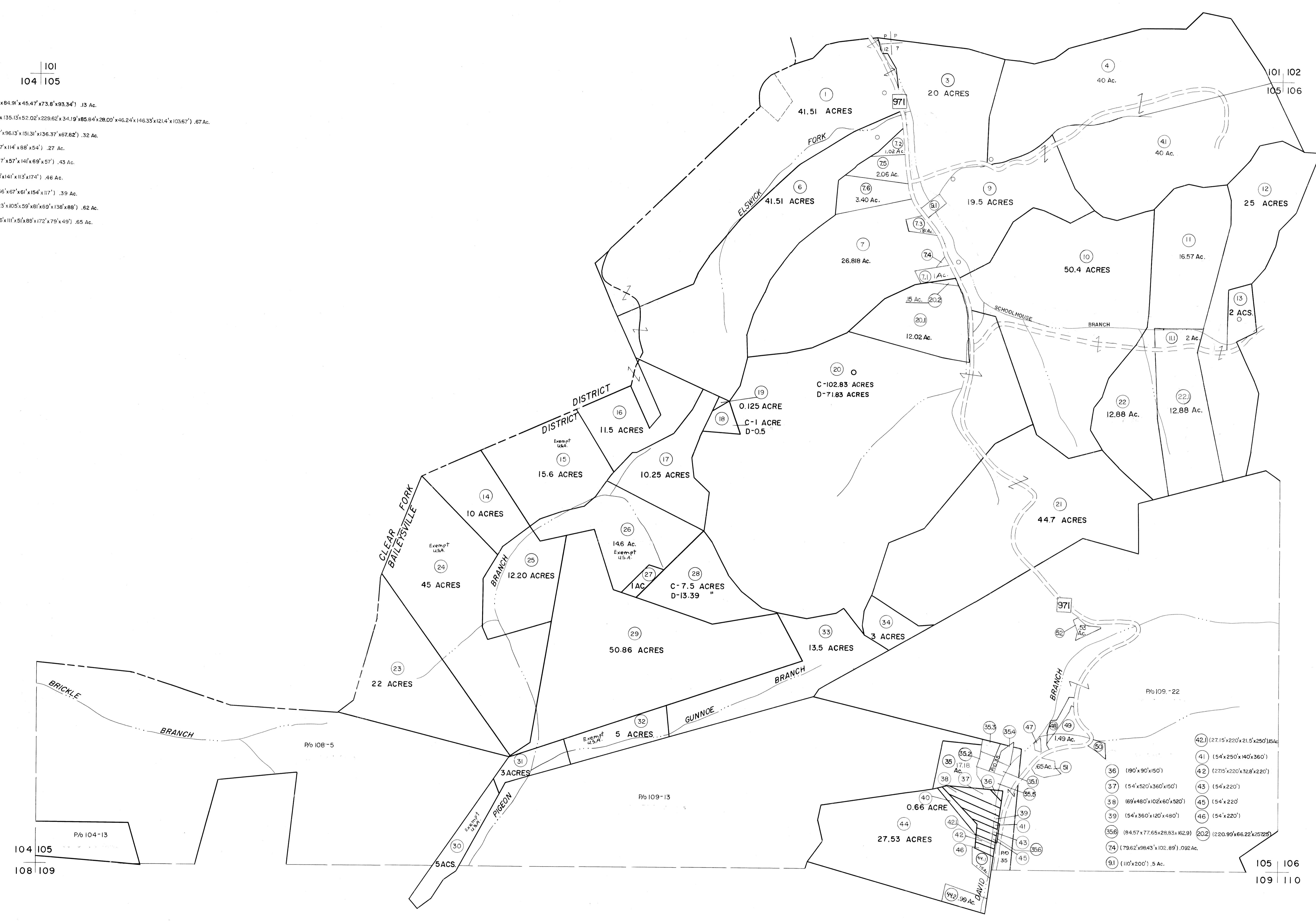


101
104 105

- 47 (58.75' x 84.91' x 45.47' x 73.8' x 93.34') .13 Ac.
- 48 (87.37' x 135.15' x 52.02' x 229.62' x 34.19' x 85.84' x 28.09' x 46.24' x 146.33' x 121.4' x 103.67') .67 Ac.
- 50 (79.57' x 96.13' x 151.31' x 136.37' x 67.82') .32 Ac.
- 351 (69' x 117' x 114' x 88' x 54') .27 Ac.
- 352 (136' x 77' x 57' x 147' x 69' x 57') .43 Ac.
- 353 (52' x 68' x 147' x 113' x 174') .46 Ac.
- 354 (94' x 66' x 67' x 61' x 154' x 117') .39 Ac.
- 355 (123' x 23' x 105' x 59' x 81' x 69' x 138' x 88') .62 Ac.
- 51 (118' x 36' x 111' x 51' x 88' x 172' x 79' x 49') .65 Ac.



BRICKLE BRANCH
P/108-5
P/104-13
104 105
108 109

P/109-22
42.1 (27.15' x 220' x 21.5' x 250' x 154'
41 (54' x 250' x 140' x 360')
42 (2715' x 220' x 328' x 220')
36 (190' x 90' x 150')
37 (54' x 520' x 360' x 150')
38 (69' x 480' x 102' x 60' x 520')
39 (54' x 360' x 120' x 480')
35.6 (84.57' x 77.65' x 28.83' x 62.9)
74 (79.62' x 98.43' x 102.89') .092 Ac.
43 (54' x 220')
45 (54' x 220')
46 (54' x 220')
20.2 (220.99' x 66.22' x 257.25')
91 (110' x 200') .5 Ac.

For Tax Purposes Only
Prepared by
MICHAEL BAKER, JR., INC.
Consulting Engineers
Rochester, Pennsylvania

Legend

Property line	-----	Original lot line	-----
Edge of pavement or roadway	-----	Deed lot number	(15)
Corporation line	-----	Parcel or index number	(19)
District line	-----	Improvement	(1)
County line	-----	Railroad	(1)

Revisions

1	3-1-64	9	OGIS 10/7/95	SAJ	17
2	2-21-75	10	OGIS 12-96	HD	18
3	JULY 1981	11	SLS INC. 11/12/98	DSW	19
4	Revised to July 83	12	ES1 2/20/01	REK	20
5	REV. TO 7-1-87	13			21
6	Revised to 11-88	14			22
7	OGIS 2/21/94	15			23
8		16			24

KEY MAP
101
104 105 106
109

WYOMING COUNTY
STATE OF WEST VIRGINIA
Office of Assessor

DISTRICT
BAILEYSVILLE
SHEET NO: 105
Date, Aerial Photography: November, 1962 Date, Map: April, 1963
Photo No: Scaled: 1" = 400'