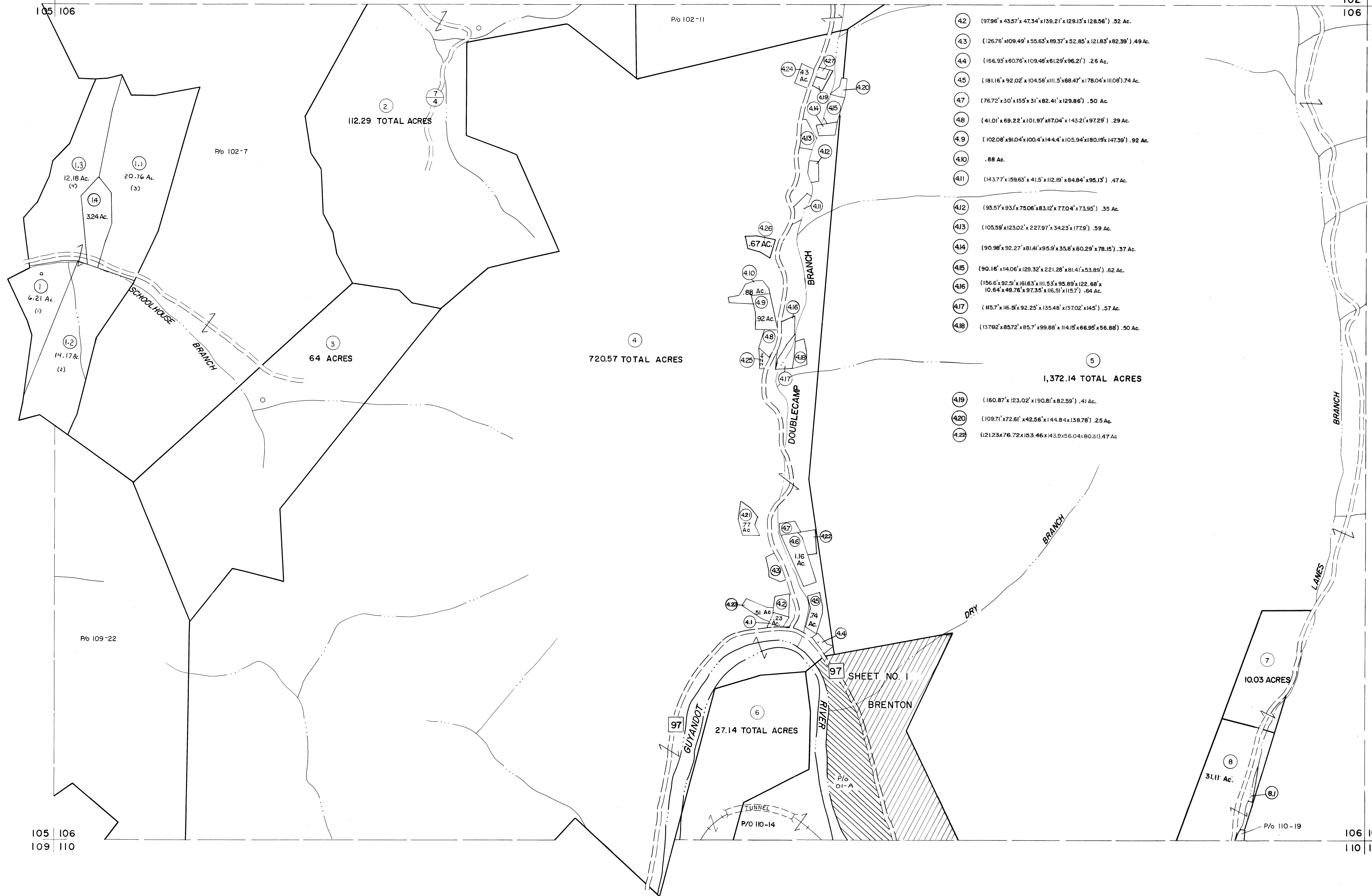
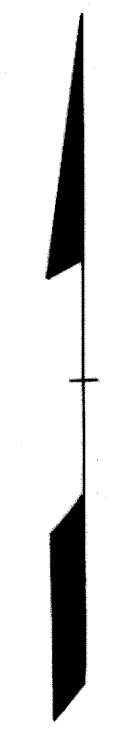


101 102  
105 106

102 103  
106 107



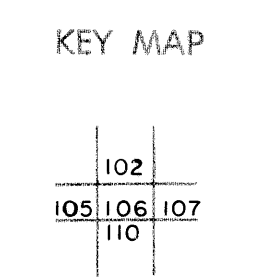
- 4.2 (97.96' x 43.57' x 47.34' x 139.21' x 129.15' x 128.56') .52 Ac.
- 4.3 (126.76' x 109.49' x 55.63' x 89.37' x 52.85' x 121.83' x 82.39') .49 Ac.
- 4.4 (166.93' x 60.76' x 109.48' x 61.29' x 96.21') .26 Ac.
- 4.5 (181.16' x 92.02' x 104.56' x 111.5' x 68.47' x 178.04' x 110.6' x 74) .74 Ac.
- 4.7 (76.72' x 30' x 155' x 31' x 82.41' x 129.86') .50 Ac.
- 4.8 (41.01' x 69.22' x 101.97' x 17.04' x 143.21' x 97.29') .29 Ac.
- 4.9 (102.08' x 91.04' x 100.4' x 14.44' x 105.94' x 180.19' x 147.39') .92 Ac.
- 4.10 .88 Ac.
- 4.11 (143.77' x 159.63' x 41.5' x 112.19' x 84.84' x 95.13') .47 Ac.
- 4.12 (93.57' x 93.1' x 75.06' x 83.12' x 77.04' x 73.95') .35 Ac.
- 4.13 (105.59' x 123.02' x 227.97' x 34.23' x 177.9') .59 Ac.
- 4.14 (90.96' x 92.27' x 81.41' x 95.9' x 35.8' x 60.29' x 78.15') .37 Ac.
- 4.15 (90.16' x 114.06' x 129.32' x 221.28' x 81.41' x 53.89') .62 Ac.
- 4.16 (156.6' x 92.51' x 161.63' x 111.53' x 95.89' x 122.68' x 10.64' x 49.76' x 97.35' x 116.51' x 115.7') .64 Ac.
- 4.17 (115.7' x 116.95' x 92.25' x 135.48' x 137.02' x 145') .57 Ac.
- 4.18 (137.92' x 85.72' x 85.7' x 99.88' x 114.15' x 66.95' x 56.88') .50 Ac.
- 5 (160.87' x 123.02' x 190.81' x 82.59') .41 Ac.
- 4.20 (109.71' x 72.61' x 42.56' x 144.84' x 138.78') .25 Ac.
- 4.22 (121.23' x 76.72' x 153.46' x 143.9' x 56.04' x 80.31' x 47) .47 Ac.



For Tax Purposes Only  
 Prepared by  
**MICHAEL BAKER, JR., INC.**  
 Consulting Engineers  
 Rochester, Pennsylvania

Legend	
Property line	Original lot line
Edge of pavement or roadway	Deed lot number
Corporation line	Parcel or index number
District line	Improvement
County line	Railroad

Revisions	
1	3-1-64
2	2-21-75 T.G.
3	JULY, 1981 TRL
4	Revised to July 85 L.M.
5	7/1/84 RLB
6	Revised to 7-1-85
7	REV. TO 7-1-87 NCS
8	



**WYOMING COUNTY**  
 STATE OF WEST VIRGINIA  
 Office of Assessor

DISTRICT  
**BAILEYSVILLE**  
 SHEET NO: 106  
 Date, Aerial Photography: November, 1962 Date, Map: April, 1963  
 Photo No: Scale: 1" = 400'