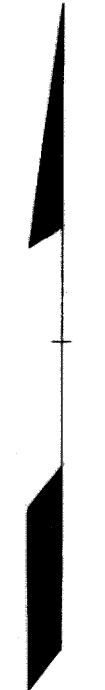
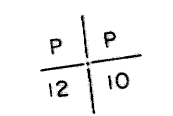
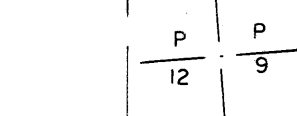


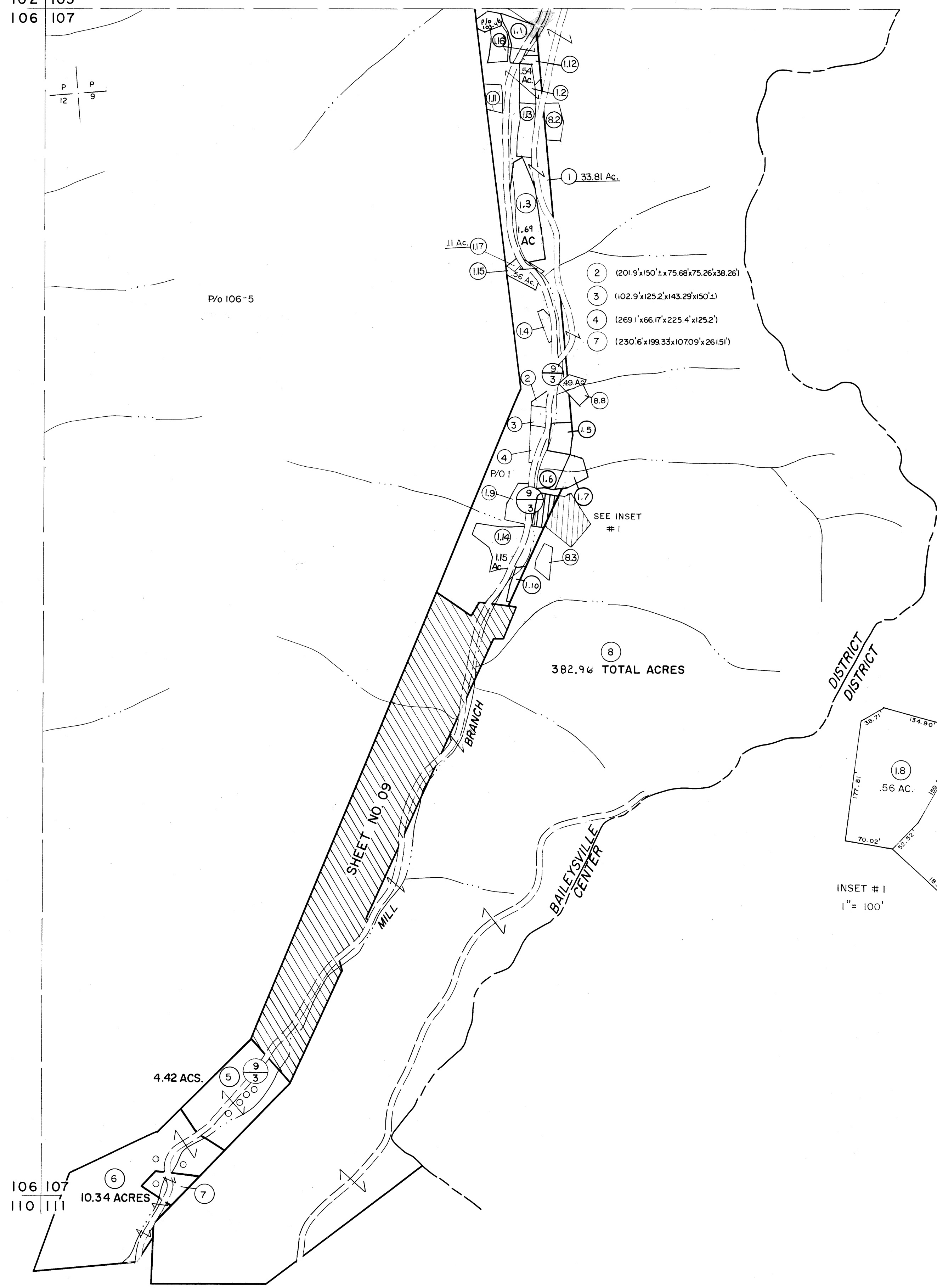
102 | 103
106 | 107

103 |
107 |

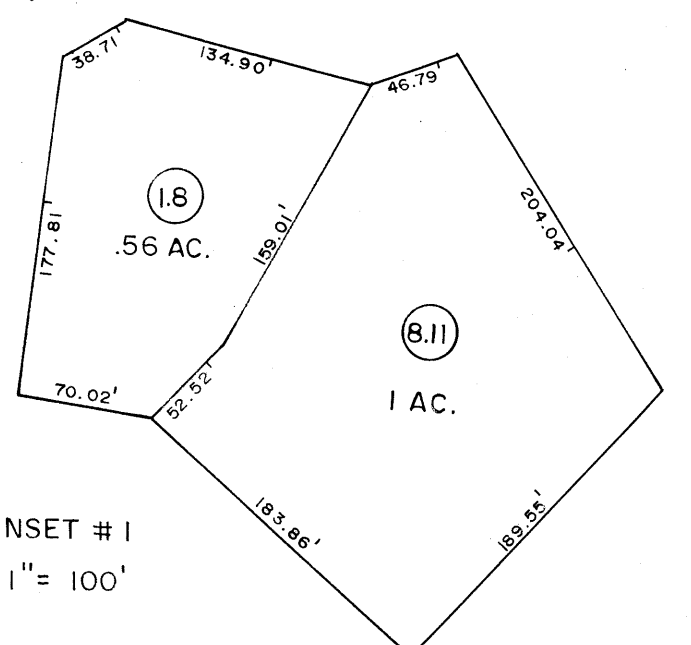


106 | 107
110 | 111

107 |
111 |



- (1.1) .55 Ac. (59x101x84x62x68x62x74x68x57x60)
- (1.2) (58x93x101x105x123x77x85)
- (1.3) (59x100x277x178x65x77x143x157x168x100)
- (1.4) .15 Ac. (154x66x22x81x107)
- (1.5) .57 Ac. (107x91x124x59x102x151)
- (1.6) .63 Ac. (266x151x99x123x62x149)
- (1.7) .58 Ac. (123x97x83x94x3151x62)
- (1.8) .56 Ac. (177x38x134x159x52x70)
- (1.9) .53 Ac. (263x102x115x117x51)
- (1.10) .16 Ac. (228x19x29x63x123x48)
- (1.11) .40 Ac. (99.33x72.02x52.44x62.93x148.09x108.95)
- (1.12) .28 Ac. (69.72x98.47x151.61x50.06x123.49)
- (1.13) .69 Ac. (89.61x103.96x112.94x101.11x114.56x56.21x149.79x104.99)
- (1.15) .56 Ac. (92.21x13.34x12.73x38.26x75.26x75.68x195.33x57.8x50)
- (8.1) .52 Ac. (143.07x36.68x100.01x81.87x69.74x78.96x80.09)
- (1.16) .51 Ac. (55.06x43.19x119.14x126.31x84.27x57.98x63.87x84.52)
- (8.2) .49 Ac. (111.81x107.96x85.47x126.45x91.05x87.12)
- (8.3) .32 Ac. (63.21x87.12x51.39x190.36x117.67)
- (8.5) .07 Ac. (126.76x118.79x53.18)
- (8.6) .23 Ac. (78.12x81.16x111.11x72.21x118.31)
- (8.9) .09 Ac. (60.49x58.62x38.64x82.21x8.91x56.38)
- (8.10) .18 Ac. (154.99x56.38x68.91x101.88x49.15)



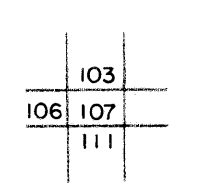
Legend

Property line	———	Original lot line	-----
Edge of pavement or roadway	-----	Deed lot number	(15)
Corporation line	-----	Parcel or index number	(99)
District line	-----	Improvement	o
County line	-----	Railroad	+

Revisions

NO.	DESCRIPTION	DATE	BY
1	3-1-64		
2	2-21-75	T.G.	
3	JULY 1981	TRL	
4	Revised to July 83	L.M.	
5	OGIS 2/21/94	DSH	
6	OGIS 10/7/95	SAJ	
7	SLS INC. 11/12/98	DSW	
8			

KEY MAP



For Tax Purposes Only

Prepared by
MICHAEL BAKER, JR., INC.
Consulting Engineers
Rochester, Pennsylvania

WYOMING COUNTY
STATE OF WEST VIRGINIA
Office of Assessor

DISTRICT
BAILEYSVILLE

SHEET NO: 107

Date, Aerial Photography: November, 1962 Date, Map: April, 1963
Photo No: Scale: 1" = 400'