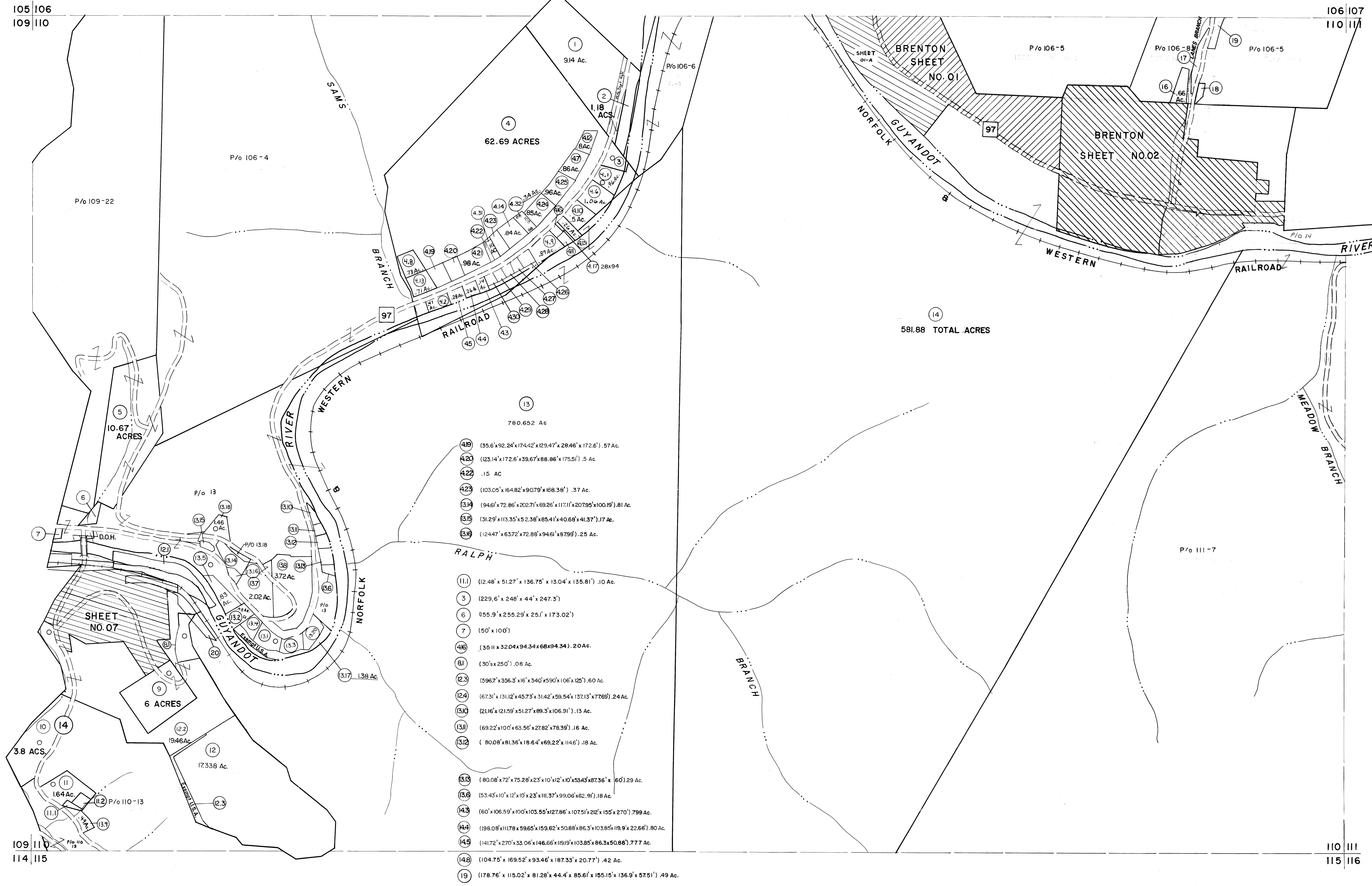


- 4.25 (3.41'x103.25'x116.63'x110.57'x104.6') .275 Ac.
- 4.27 (75.69'x104.6'x23.8'x58.69'x98.84') .18 Ac.
- 4.28 (79.95'x99.84'x80'x95.38') .18 Ac.
- 4.29 (73.37'x6.68'x95.38'x80.38'x95.9') .177 Ac.
- 4.30 (78.77'x95.9'x84.92'x88.32') .17 Ac.

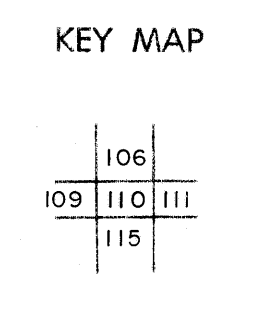


- 4.18 (35.6'x92.24'x174.42'x129.47'x28.46'x172.6') .57 Ac.
- 4.20 (123.14'x172.6'x39.67'x88.86'x175.51') .5 Ac.
- 4.22 .15 AC
- 4.23 (103.05'x164.82'x90.79'x168.38') .37 Ac.
- 13.14 (94.61'x72.86'x202.71'x69.26'x117.11'x207.95'x100.19') .81 Ac.
- 13.15 (31.29'x113.35'x52.38'x85.41'x40.68'x41.37') .17 Ac.
- 13.16 (124.47'x63.72'x72.88'x94.61'x87.99') .25 Ac.
- 11.11 (12.48'x51.27'x136.75'x13.04'x135.81') .10 Ac.
- 3 (229.6'x248'x44'x247.3')
- 6 (55.9'x255.29'x25.1'x173.02')
- 7 (50'x100')
- 4.16 (35.11'x32.04'x94.34'x68'x94.34') .20 Ac.
- 8.1 (30'x250') .08 Ac.
- 12.3 (596.7'x356.3'x16'x340'x590'x106'x125') .60 Ac.
- 12.4 (67.31'x131.12'x45.73'x31.42'x59.54'x137.13'x77.69') .24 Ac.
- 13.10 (2116'x121.59'x51.27'x89.3'x106.91') .13 Ac.
- 13.11 (69.22'x100'x63.56'x27.82'x76.39') .16 Ac.
- 13.12 (80.08'x81.36'x18.64'x69.22'x114.6') .18 Ac.
- 13.13 (80.08'x72'x75.28'x23'x10'x12'x10'x53.43'x87.36'x 60) .29 Ac.
- 13.6 (53.43'x10'x12'x10'x23'x111.37'x99.06'x62.91') .18 Ac.
- 14.3 (60'x106.59'x100'x103.55'x127.86'x107.51'x22'x155'x270') .799 Ac.
- 14.4 (198.08'x117.8'x59.65'x159.62'x50.88'x86.3'x103.85'x119.9'x22.66') .80 Ac.
- 14.9 (141.72'x270'x33.06'x146.66'x101.9'x103.85'x86.3'x50.88') .777 Ac.
- 14.8 (104.75'x169.52'x93.46'x187.33'x20.77') .42 Ac.
- 19 (178.76'x115.02'x81.28'x44.4'x85.61'x155.15'x136.9'x57.51') .49 Ac.

For Tax Purposes Only
 Prepared by
MICHAEL BAKER, JR., INC.
 Consulting Engineers
 Rochester, Pennsylvania

Legend	
Property line	—
Edge of pavement or roadway	- - - -
Corporation line	—
District line	- - - -
County line	—
Original lot line	- - - -
Deed lot number	(15)
Parcel or index number	(29)
Improvement	o
Railroad	—

Revisions	
1	3-1-64
2	2-26-75 T.C.
3	JULY 1981 TRL
4	Revised to July 83 C.M.
5	7/1/84 RLB
6	Revised to 7-1-85 C.M.
7	REV. TO 7-1-87 NCS
8	Revised to 7-1-88 RLB
9	OGIS 10/29/92 SAJ
10	OGIS 2/23/94 DSH
11	OGIS 10/7/95 SAJ
12	SLS INC. 11/13/98 DSW
13	ESI 2/16/01 REK
14	ESI 1/28/03 REK
15	
16	



WYOMING COUNTY
 STATE OF WEST VIRGINIA
 Office of Assessor

DISTRICT
BAILEYSVILLE
 SHEET NO: 110
 Date, Aerial Photography November, 1962 Date, Map April, 1963
 Photo No: Scale: 1" = 400'