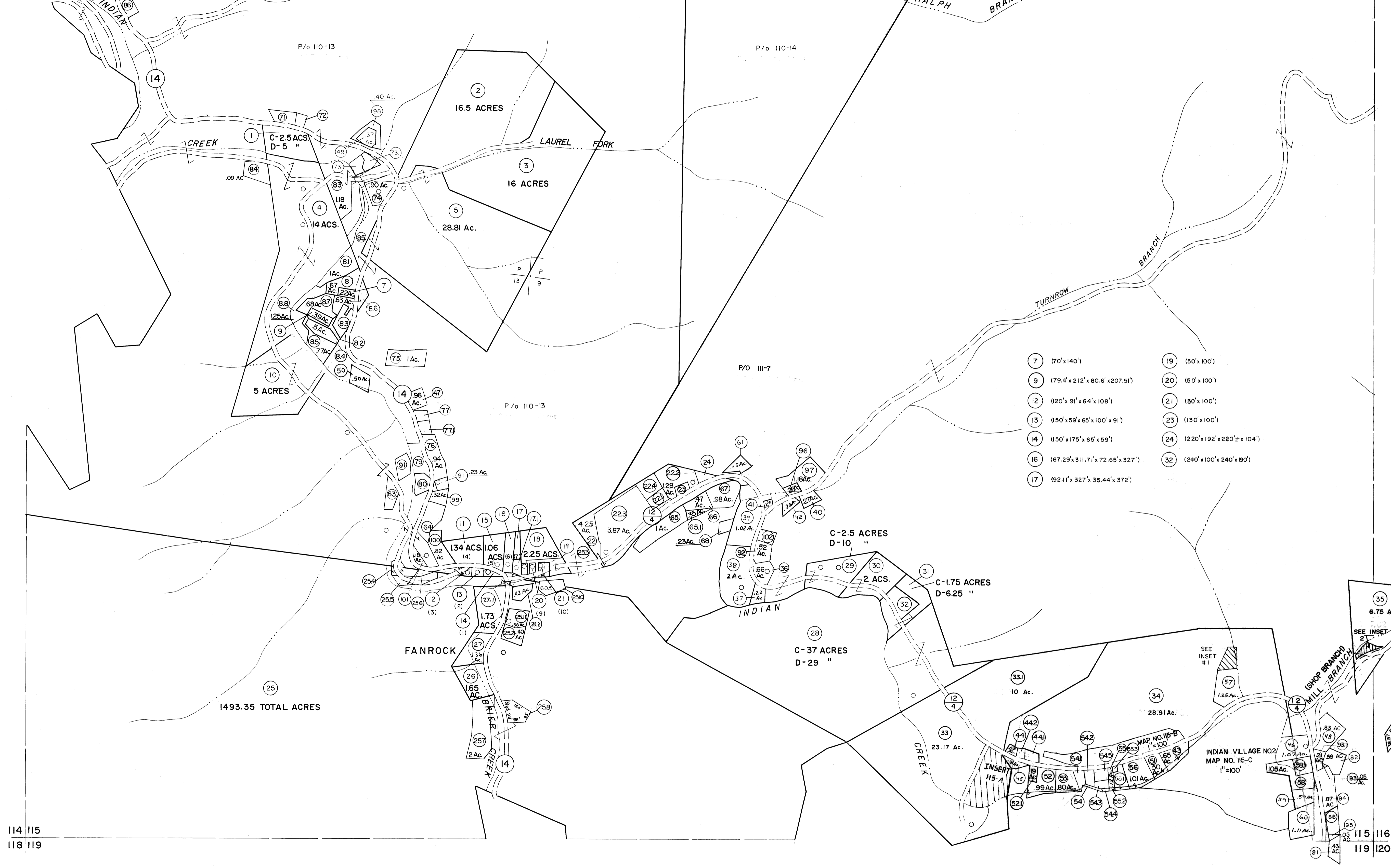


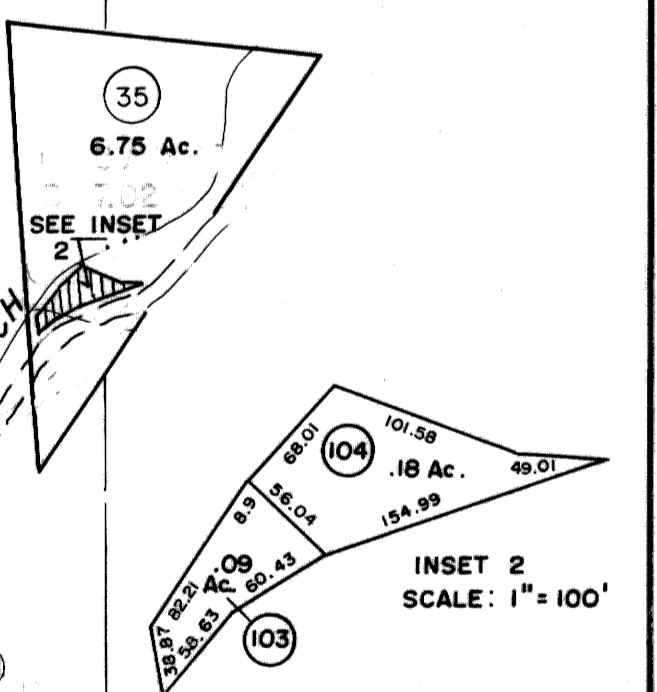
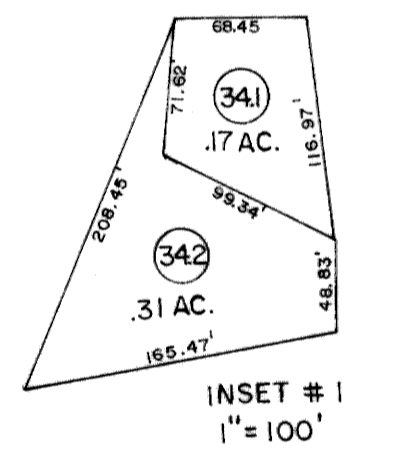
109 110  
114 115

110 111  
115 116



- 64 (161.6' x 243.8' x 186.0' x 233.1' x 119.0') .75 Ac.
- 63 (81.27' x 77.77' x 149.22' x 70.02' x 271.28') .44 Ac.
- 66 (130.54' x 90.03' x 143.46' x 222.9' x 53.05') .47 Ac.
- 771 (112.09' x 90' x 121.58' x 95.19') .25 Ac.
- 542 (75' x 143' x 87.5' x 104') .20 Ac.
- 552 (60' x 50') .07 Ac.
- 541 (116.97' x 99.34' x 71.67' x 68.45') .17 Ac.
- 63 (153.72' x 95.09' x 22.31' x 103.03' x 74.17' x 85.18' x 39.09' x 68.53' x 98.9' x 23.34') .80 Ac.
- 71 (23.05' x 209.49' x 95.53' x 186.44' x 42.28' x 99.83') .52 Ac.
- 77 (92' x 91' x 1' x 92' x 85.19') .41 Ac.
- 543 (88' x 106.1' x 50' x 44.56' x 66.35') .09 Ac.
- 553 (41' x 50') .05 Ac.
- 65 (126.3' x 69.3' x 83.61' x 115.73' x 70.34' x 38.96' x 95.37' x 63.47' x 145.19' x 65.99' x 34.14' x 29.44') .29 Ac.
- 64 (48.69' x 38.67' x 66.91' x 81.25' x 53.37' x 48.88' x 129.99' x 109.62' x 81.71') .41 Ac.
- 781 (100' x 100') .23 Ac.
- 544 (20' x 60') .03 Ac.
- 442 (80' x 55' x 65' x 75')
- 66 (116.22' x 131.85' x 92.45' x 81.75' x 178.14' x 88.93') .53 Ac.
- 254 (129.99' x 48.38' x 46.55' x 46.55' x 113.75' x 40.46' x 86.37' x 139.39' x 4.31' x 18.84') .52 Ac.
- 72 (164.88' x 99.83' x 79.22' x 97.2') .16 Ac.
- 79 (163.53' x 82.59' x 85.55' x 20.96' x 95.16' x 143.62' x 93.62') .51 Ac.
- 545 (84.56' x 106.1' x 84.56' x 44.67' x 59.27') .20 Ac.
- 102 (98.34' x 132.94' x 97.97' x 130.97') .29 Ac.
- 67 (88' x 112') .5 Ac.
- 255 (102.69' x 27.39' x 105.47' x 200.36') .49 Ac.
- 73 (47.67' x 64' x 48.88' x 78.1' x 112.86' x 126.08') .27 Ac.
- 80 (85.16' x 67.37' x 85.55' x 77.84' x 91.09' x 123.6' x 32.78') .46 Ac.
- 54 (19.86' x 80' x 104' x 35' x 66.77' x 165.46') .20 Ac.
- 551 (42.13' x 200.58' x 117.41' x 132.56' x 41 x 50) .44 Ac.
- 68 (102.95' x 97.97' x 99.76' x 117.46') .23 Ac.
- 71 (23.05' x 209.49' x 95.53' x 186.44' x 42.28' x 99.83') .52 Ac.
- 72 (164.88' x 99.83' x 79.22' x 97.2') .16 Ac.
- 73 (47.67' x 64' x 48.88' x 78.1' x 112.86' x 126.08') .27 Ac.
- 74 (37.07' x 71.4' x 99' x 120.8' x 78.2' x 46.68' x 47.57') .30 Ac.
- 221 (169.66' x 65.9' x 155.27' x 93.05') .35 Ac.
- 224 (170' x 164' x 157' x 155') .75 Ac.
- 253 (76' x 35' x 30' x 35' x 112' x 205' x 75' x 35') .50 Ac.
- 441 (84' x 94' x 62' x 102') .25 Ac.
- 541 (19.86' x 80' x 104' x 35' x 66.77' x 165.46') .20 Ac.
- 552 (60' x 50') .07 Ac.
- 553 (41' x 50') .05 Ac.
- 442 (80' x 55' x 65' x 75')
- 102 (98.34' x 132.94' x 97.97' x 130.97') .29 Ac.
- 521 (64' x 127' x 64' x 127') .19 Ac.

- 7 (70' x 140')
- 9 (79.4' x 212' x 80.6' x 207.5')
- 12 (120' x 91' x 64' x 108')
- 13 (50' x 59' x 65' x 100' x 91')
- 14 (150' x 175' x 65' x 59')
- 16 (67.29' x 311.71' x 72.65' x 327')
- 17 (92.11' x 327' x 35.44' x 372')
- 19 (50' x 100')
- 20 (50' x 100')
- 21 (80' x 100')
- 23 (130' x 100')
- 24 (220' x 192' x 220' x 104')
- 32 (240' x 100' x 190')



114 115  
118 119

115 116  
119 120

**For Tax Purposes Only**

Prepared by  
**MICHAEL BAKER, JR., INC.**  
Consulting Engineers  
Rochester, Pennsylvania

**Legend**

Property line	Original lot line	(5)
Edge of pavement or roadway	Deed lot number	(9)
Corporation line	Parcel or index number	(1)
District line	Improvement	(2)
County line	Railroad	(3)

**Revisions**

1	3-1-64	9	OGIS 10/29/92 SAJ	17	ESI	1/28/03	REK
2	2-28-75	T.G.	OGIS 2/24/94 DSH	18			
3	JULY 1981	TRL	O.G.I.S 9-20-95 J.E.B	19			
4	7/1/83	L.M.	OGIS 12-96 HW	20			
5	7/1/84	R.L.B.	SLS INC 12/31/97 J.W.M	21			
6	Revised to 7-1-85	C.F.	SLS INC. 1/21/00 DSW	22			
7	REV. TO 7-1-87	N.C.S.	ESI 2/16/01 REK	23			
8	Revised to 7-1-88	F.R.B.		24			

**KEY MAP**

**WYOMING COUNTY**  
STATE OF WEST VIRGINIA  
Office of Assessor

DISTRICT  
**BAILEYSVILLE**

**SHEET NO: 115**

Date, Aerial Photography: November, 1962 Date, Map: April 1963  
Photo No: Scale: 1" = 400'