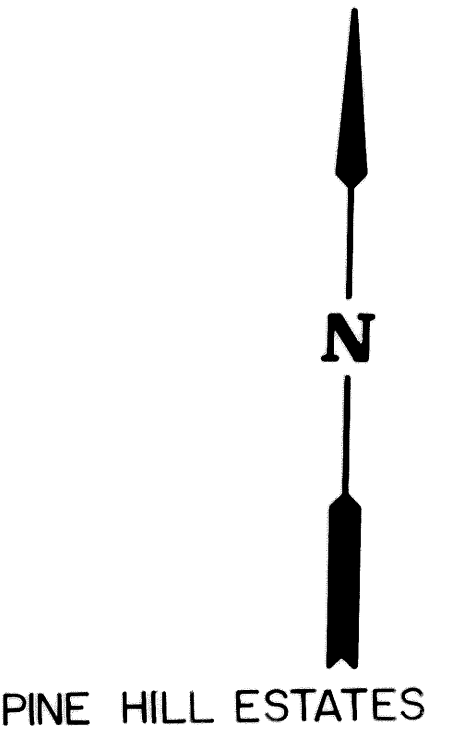
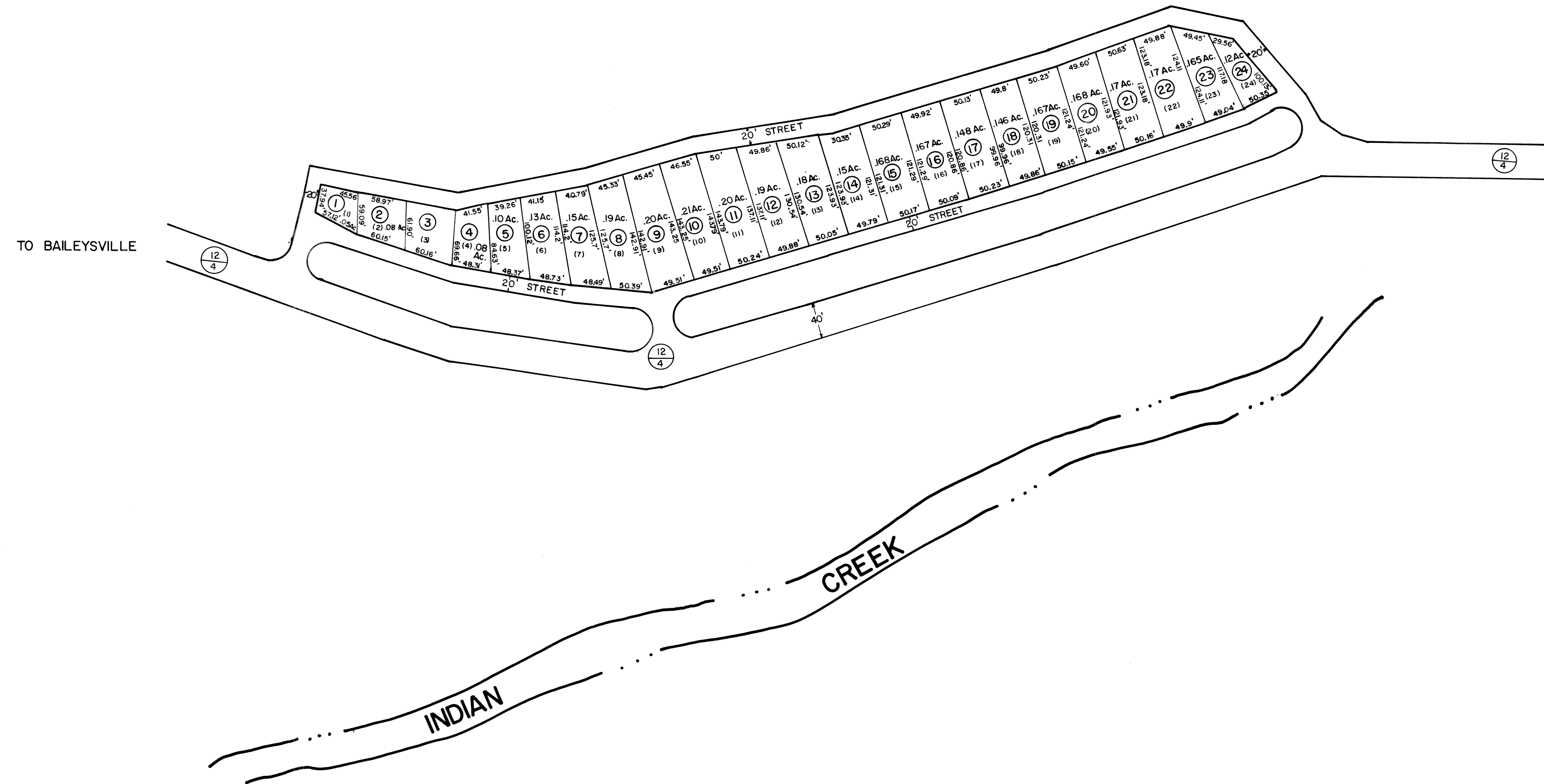


③ (60.16' x 61.9' x 59.04' x 69.66') .09 Ac.

②④ (150.35' x 117.18' x 295.6' x 100.13') .126 Ac.



PINE HILL ESTATES

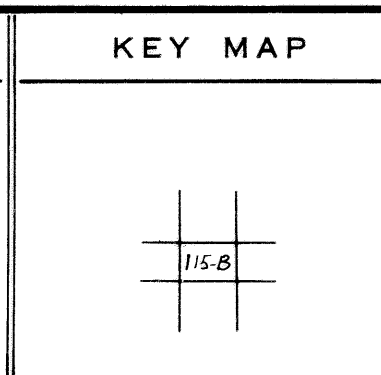
For Tax Purposes Only  
 Prepared by  
 LOCAL GOVERNMENT RELATIONS DIV.  
 STATE TAX COMMISSIONER  
 CHARLESTON, W.VA.

LEGEND	
Property line	Original lot line
Edge of pavement or roadway	Deed lot number
Corporation line	Parcel or index number
District line	Improvement
County line	Railroad

REVISIONS	
1	JULY, 1981 NEW MAP 4/20/85 TRL
2	OGIS 10/31/92 SAJ
3	ESI 2/16/01 REK
4	
5	
6	
7	
8	

**RESTRICTION**

All tax maps created under the provisions of reappraisal legislation are the property of the State of West Virginia and the reproduction, copying, distribution or sale of such tax maps or any copies thereof without the written permission of the State Tax Commissioner is prohibited by law.



**WYOMING COUNTY**  
 STATE OF WEST VIRGINIA  
 Office of Assessor

**BAILEYSVILLE DIST.**  
**SHEET NO: 115-B**  
 Date, Aerial Photography: 3-9-82  
 Photo No: 115-B  
 Scale: 1"=100'