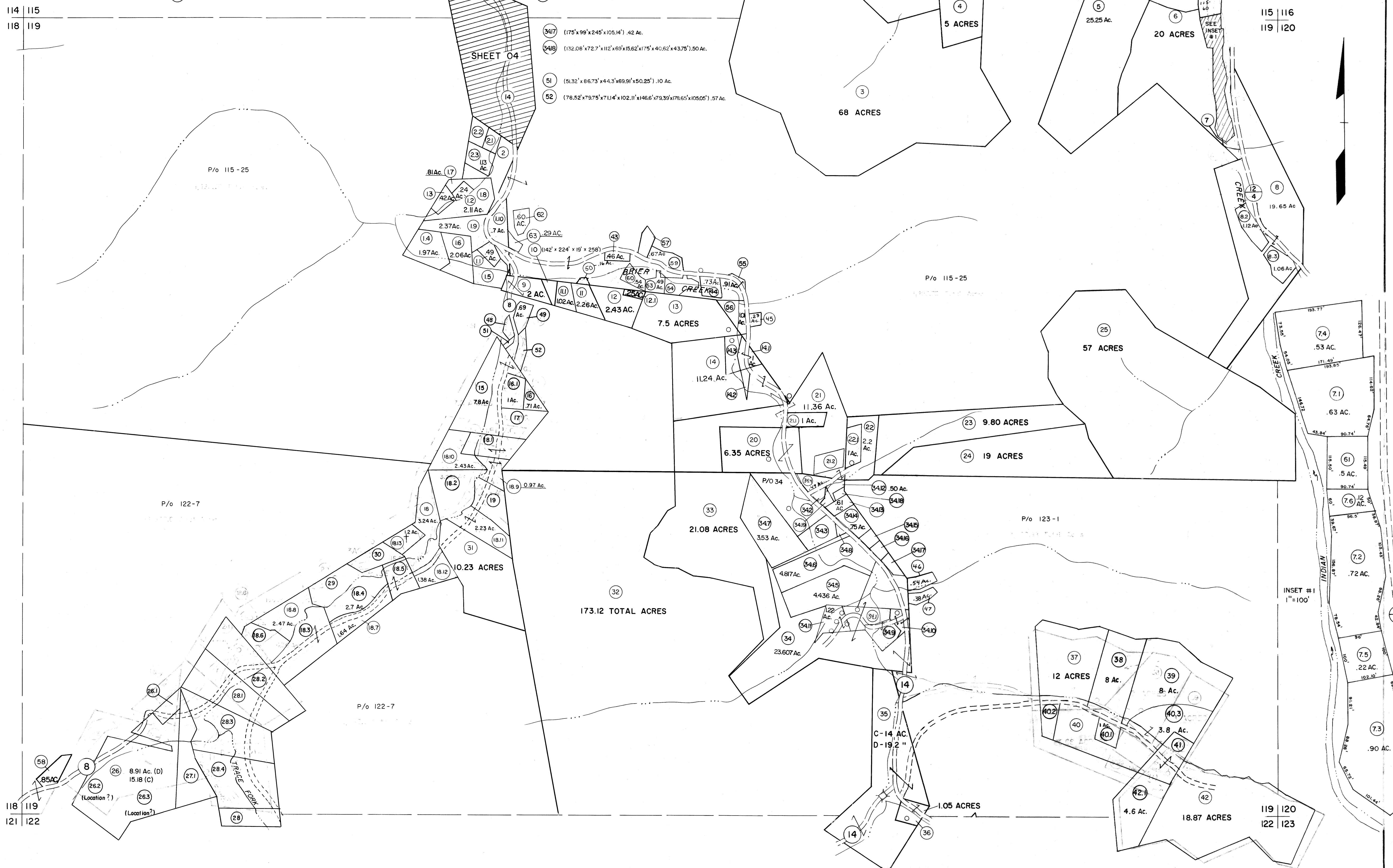


- 1.1 (38'x94'x84'x228.6'x146.2')
- 1.2 (57'x152.4'x120'x189.1')
- 1.3 (180'x70'x230.5'x7'x57')
- 2.1 (167.09'x130'x179.57'x135'x.52 Ac.)
- 2.2 (179.57'x143.88'x230.34'x169.39'x.79 Ac.)
- 7.5 (102.0'x100'x96'x100'x.22 Ac.)
- 14.2 (84.05'x107.84'x86.95'x273.24'x.26 Ac.)
- 14.3 (116.79'x139.07'x135.11'x338.96'x135.11'x.86 Ac.)
- 26.2 (118.5'x156.4'x65.3'x229.3')
- 34.8 (122.2'x88.88'x112.6'x.11 Ac.)

- 34.6 (137.04'x118'x135'x99'x.34 Ac.)
- 34.7 (972'x73.24'x95.27'x172.07'x91.66'x55.14'x87.96'x72.76'x.52 Ac.)
- 34.8 (100.55'x42'x172'x142'x219'x.61 Ac.)
- 34.14 (172'x269.39'x140'x100.66'x133.28'x.75 Ac.)
- 34.15 (132'x140'x130'x118'x.39 Ac.)
- 34.17 (175'x99'x245'x105.14'x.42 Ac.)
- 34.18 (132.08'x72.7'x112'x69'x15.62'x175'x40.62'x43.75'x.50 Ac.)
- 51 (51.32'x86.73'x44.3'x69.91'x50.25'x.10 Ac.)
- 52 (78.52'x79.75'x71.14'x102.11'x146.6'x79.39'x78.65'x105.05'x.57 Ac.)



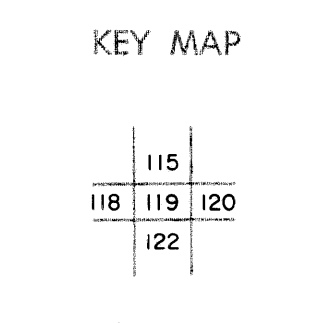
**For Tax Purposes Only**  
 Prepared by  
**MICHAEL BAKER, JR., INC.**  
 Consulting Engineers  
 Rochester, Pennsylvania

**Legend**

Property line	Original lot line
Edge of pavement or roadway	Deed lot number
Corporation line	Parcel or index number
District line	Improvement
County line	Railroad

**Revisions**

1	3-1-G4	9	OGIS	11/1/92	SAJ	17	ESI	2/5/02	REK
2	Nicely 3-4-76 T.G.	10	OGIS	2/25/94	DSH	18	ESI	1/28/03	REK
3	JULY 1981	11	O.G.I.S	9-20-95	J.E.B	19			
4	JULY 1983	12	OGIS	12-96	HD	20			
5	7/1/84	13	SLS INC.	11/13/98	DSW	21			
6	Revised to 7-1-85	14	SLS INC.	1/21/00	DSW	22			
7	REV TO 7-1-87	15	ESI	2/20/01	REK	23			
8	Revised to 7-1-88	16				24			



**WYOMING COUNTY**  
 STATE OF WEST VIRGINIA  
 Office of Assessor

DISTRICT  
**BAILEYSVILLE**  
 SHEET NO: 119  
 Date, Aerial Photography: November, 1962 Date, Map: April, 1963  
 Photo No: Scale: 1" = 400'