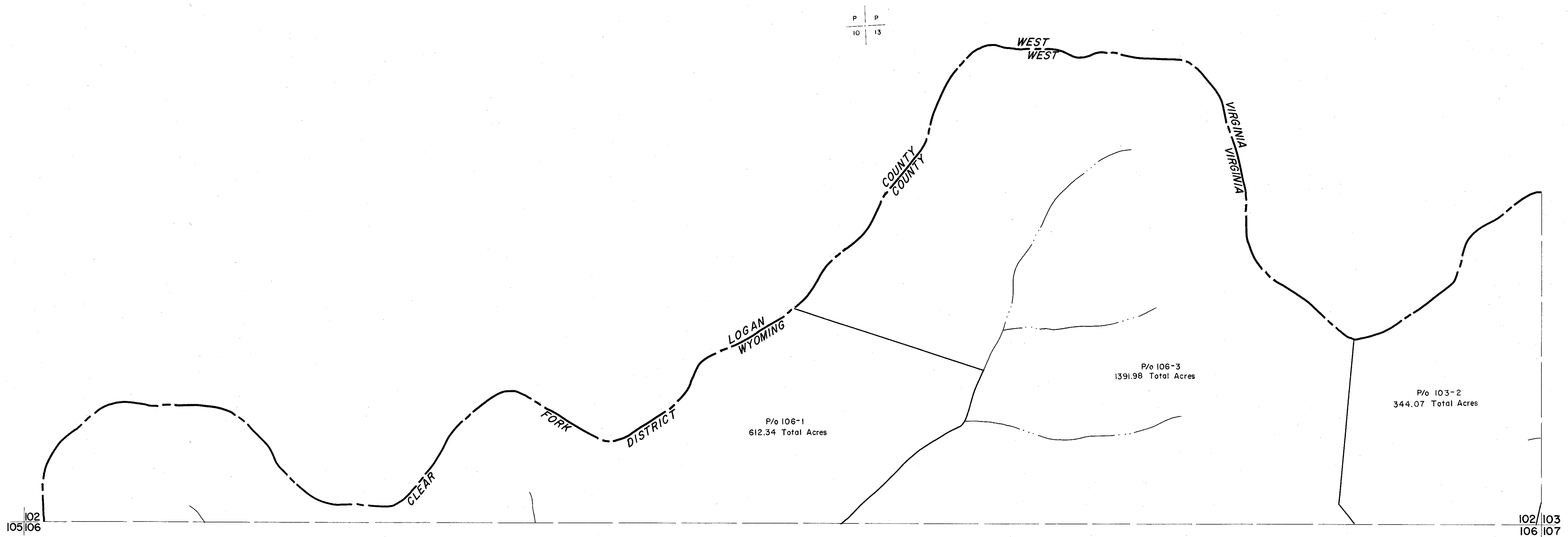


102

100  
102 103



102  
105 106

102 103  
106 107

For Tax Purposes Only

Prepared by  
MICHAEL BAKER, JR., INC.  
Consulting Engineers  
Rochester, Pennsylvania

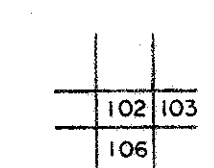
Legend

Property line	—	Original lot line	—
Edge of pavement or roadway	—	Deed lot number	(15)
Corporation line	—	Parcel or index number	(15)
District line	—	Improvement	o
County line	—	Railroad	+

Revisions

1	3-1-64	9	17
2	Revised to 7-1-61	10	18
3		11	19
4		12	20
5		13	21
6		14	22
7		15	23
8		16	24

KEY MAP



WYOMING COUNTY

STATE OF WEST VIRGINIA

Office of Assessor

DISTRICT

CLEAR FORK

SHEET NO: 102

Date, Aerial Photography: November, 1962 Date, Map: April, 1963  
Photo No: Scale: 1" = 400'