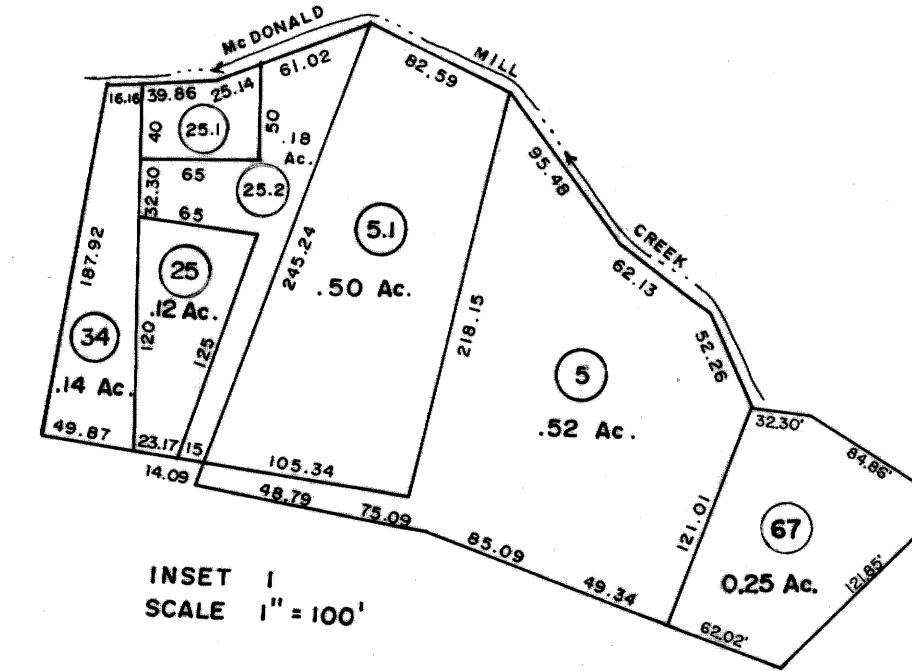


104
108 109

109 110



- 19 (38.95X67.63X88.9X151.24X137.5) .32 Ac.
- 21 (110.87X131) .33 Ac.
- 21 (110.87X262) .66 Ac.
- 22 (60X125X55X82.6X42.72) .16 Ac.
- 20 .375 Ac.
- 27 (97.84X200X98.32X202.31) .45 Ac.
- 29 (132X184X132.01X184.07) .555 Ac.
- 30 (106.81X222.36X105.05X184) .488 Ac.
- 31 (101X208.46X38X65.62X222.16) .50 Ac.
- 32 (117.04X171.74X161.08X167.8X208.46) .50 Ac.
- 33 (114.89X195.59X97.65X171.74) .50 Ac.
- 40 (60.52X393.98X71.64X354.57) .547 Ac.
- 43 (110X110) .277 Ac.
- 45 (108.1X205.97X105.49X98.1X131.72) .5 Ac.
- 20 (83.18X48X89.19X51.67) .125 Ac.
- 22 .48 Ac.

108 109
114 115

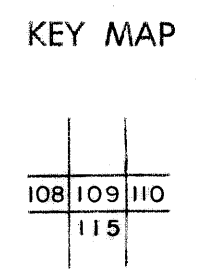
109 110
115 116

For Tax Purposes Only

Prepared by
MICHAEL BAKER, JR., INC.
Consulting Engineers
Rochester, Pennsylvania

Legend	
Property line	———
Edge of pavement or roadway	———
Corporation line	———
District line	———
County line	———
Original lot line	---
Dead lot number	(15)
Parcel or index number	(97)
Improvement	o
Railroad	———

Revisions	
1	3-1-64
2	2/28/78 DLG JC
3	Revised to 7-1-81
4	Revised to July 83 CM
5	July 11/85
6	Revised to 7-1-87
7	REV. TO 7-1-88 NCS
8	OGIS 11-5-92 RO
9	OGIS 2/19/94 DSH
10	O.G.I.S 9-20-95 J.E.B
11	SLS INC. 1/2/98 DSW
12	SLS INC. 11/10/98 DSW
13	SLS INC. 1/11/00 DSW
14	ES1 2/15/01 REK
15	ES1 1/30/02 REK
16	
17	ES1 1/22/03 REK
18	
19	
20	
21	
22	
23	
24	



WYOMING COUNTY
STATE OF WEST VIRGINIA
Office of Assessor

DISTRICT
CLEAR FORK

SHEET NO: 109

Date, Aerial Photography: November, 1962 Date, Map: April, 1963
Photo No: Scale: 1" = 400'