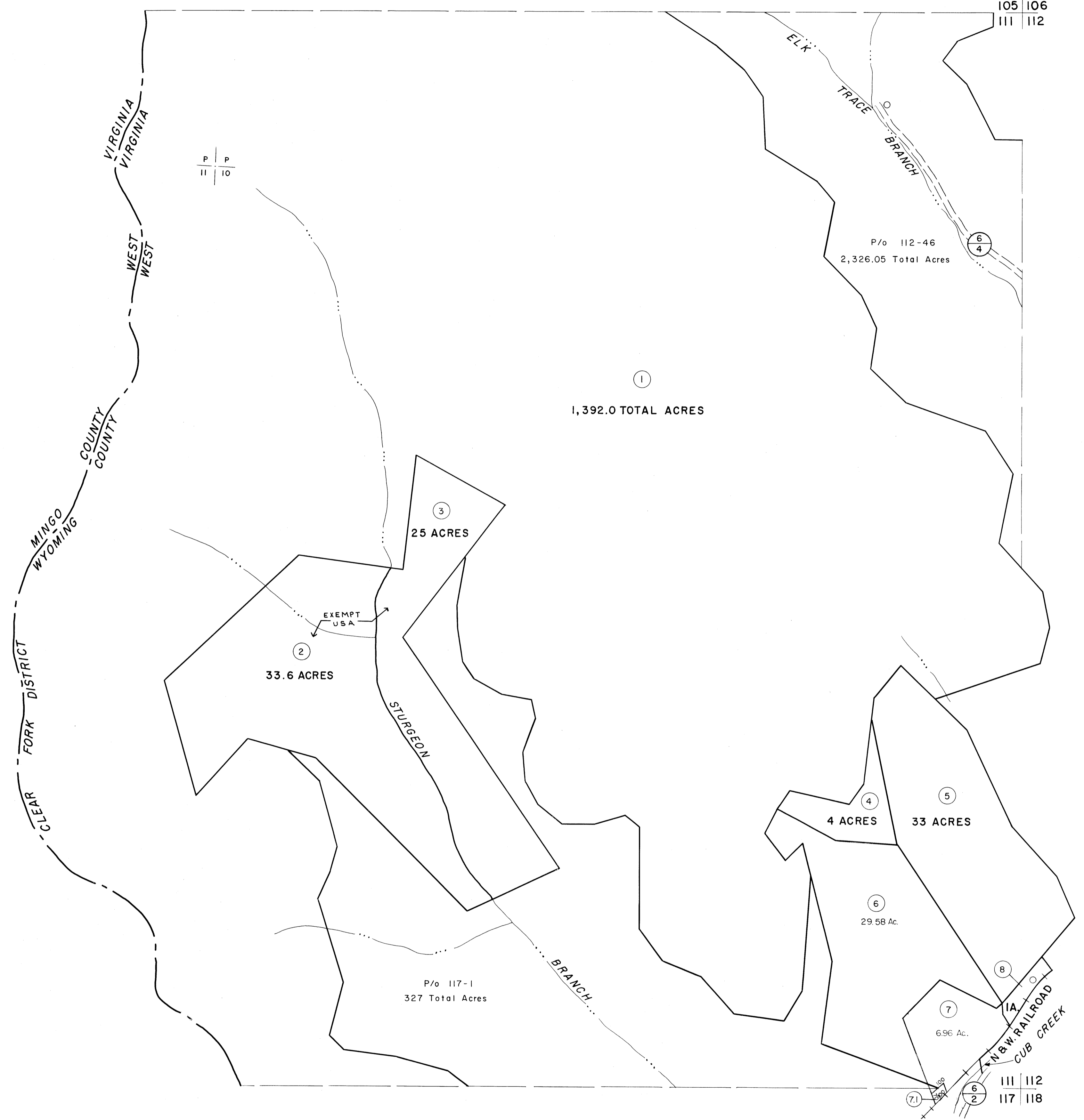


105
111

105 106
111 112

111
117



For Tax Purposes Only
 Prepared by
MICHAEL BAKER, JR., INC.
 Consulting Engineers
 Rochester, Pennsylvania

| Legend | |
|-----------------------------|---------|
| Property line | ————— |
| Edge of pavement or roadway | ——— |
| Corporation line | ----- |
| District line | ----- |
| County line | ----- |
| Original lot line | ----- |
| Deed lot number | (15) |
| Parcel or index number | (17) |
| Improvement | o |
| Railroad | —+—+—+— |

| Revisions | | | |
|-----------|-------------------|----|----|
| 1 | 3-1-64 | 9 | 17 |
| 2 | 2/28/78 | 10 | 18 |
| 3 | Revised to 7-1-81 | 11 | 19 |
| 4 | | 12 | 20 |
| 5 | | 13 | 21 |
| 6 | | 14 | 22 |
| 7 | | 15 | 23 |
| 8 | | 16 | 24 |

KEY MAP

WYOMING COUNTY
 STATE OF WEST VIRGINIA
 Office of Assessor

DISTRICT **CLEAR FORK**
 SHEET NO: **111**
 Date, Aerial Photography: November, 1962 Date, Map: April, 1963
 Photo No: _____ Scale: 1" = 400'