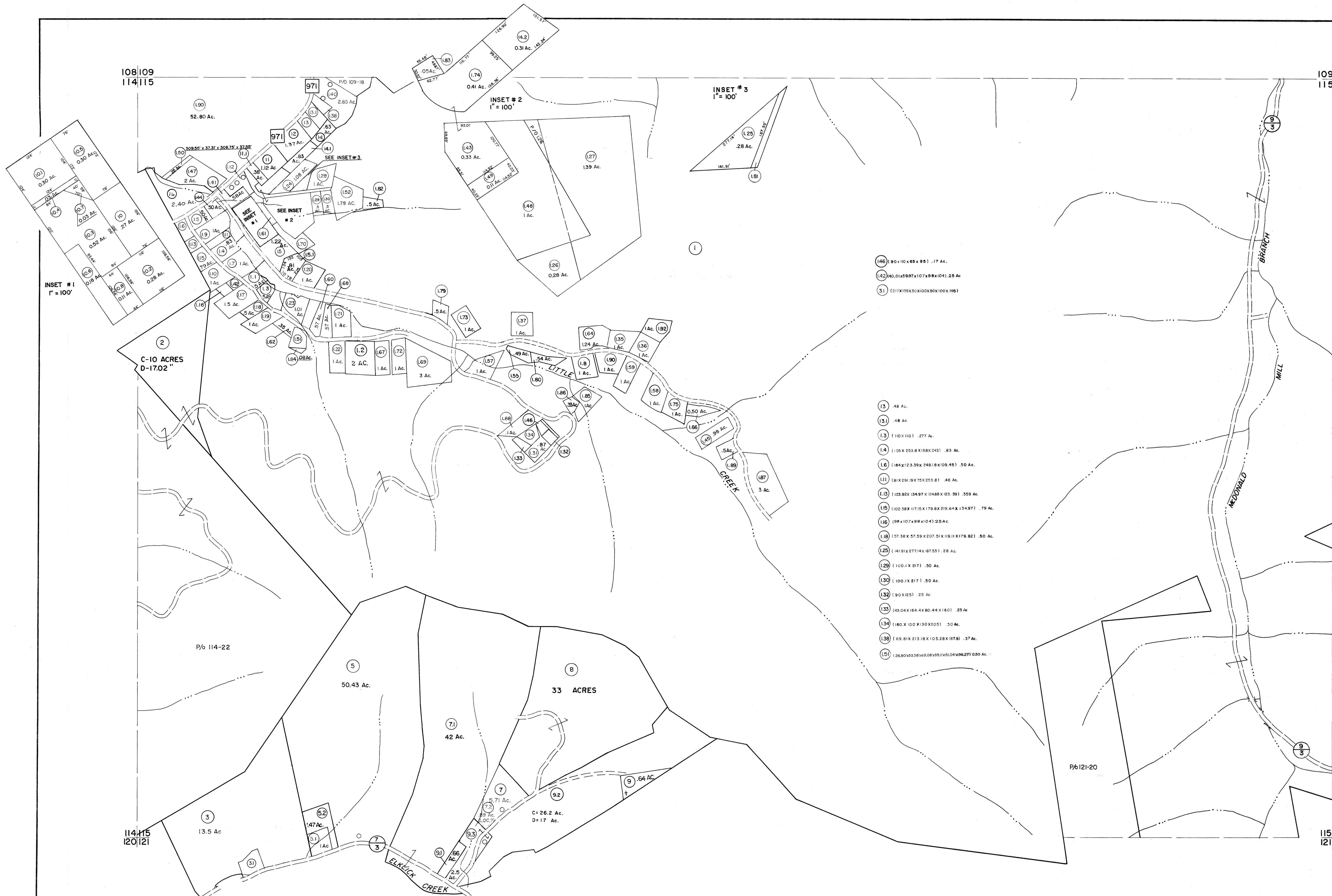


108|09
114|115

109|110
115|116



INSET #1
1" = 100'

INSET #2
1" = 100'

INSET #3
1" = 100'

- (146) 190x110x65x95 .17 Ac.
- (142) 40.01x59.7x107x98x104 .25 Ac.
- (31) 217x155x50x100x50x100x195

- (13) .48 Ac.
- (131) .48 Ac.
- (13) 110x110 .277 Ac.
- (14) 155x253.8x158x243 .83 Ac.
- (16) 184x123.39x248.18x109.45 .50 Ac.
- (111) 81x251.9x75x253.8 .46 Ac.
- (115) 123.92x134.97x124.68x123.39 .359 Ac.
- (115) 102.58x117.5x179.8x219.64x134.97 .79 Ac.
- (116) 98x107x98x104 .25 Ac.
- (118) 57.38x57.59x207.51x19.11x179.82 .50 Ac.
- (125) 141.91x277.14x187.55 .28 Ac.
- (129) 110.1x217 .50 Ac.
- (130) 100.1x217 .50 Ac.
- (132) 90x125 .25 Ac.
- (133) 43.04x164.4x80.44x160 .23 Ac.
- (134) 160x100x130x205 .50 Ac.
- (138) 69.81x213.18x105.28x187.81 .37 Ac.
- (151) 26.80x53.58x48.08x99.11x151.04x96.27x0.50 Ac.

For Tax Purposes Only

Prepared by
MICHAEL BAKER, JR., INC.
Consulting Engineers
Rochester, Pennsylvania

Legend

Property line	—————	Original lot line	-----
Edge of pavement or roadway	-----	Deed lot number	(15)
Corporation line	-----	Parcel or index number	(9)
District line	-----	Improvement	o
County line	-----	Railroad	—+—+—+—

Revisions

1	3-1-64	9	OGIS	2/19/94	DSH	17	ESI	1/23/03	REK
2	2/27/75	10	OGIS	12/26/96	SAJ	18			
3	Revised to 7-1-81	11	SLS INC.	1/2/98	DSW	19			
4	Revised to July 83	12	SLS INC.	11/10/98	DSW	20			
5	Revised to 7-1-84	13	SLS INC.	1/11/00	DSW	21			
6	July 1985	14	ESI	2/15/01	REK	22			
7	Revised to 7-1-87	15	ESI	1/31/02	REK	23			
8	OGIS 11-5-92	16				24			

KEY MAP



WYOMING COUNTY
STATE OF WEST VIRGINIA
Office of Assessor

DISTRICT

CLEAR FORK

SHEET NO:115

Date, Aerial Photography: November, 1962 Date, Map: April, 1963
Photo No. Scale: 1" = 400'