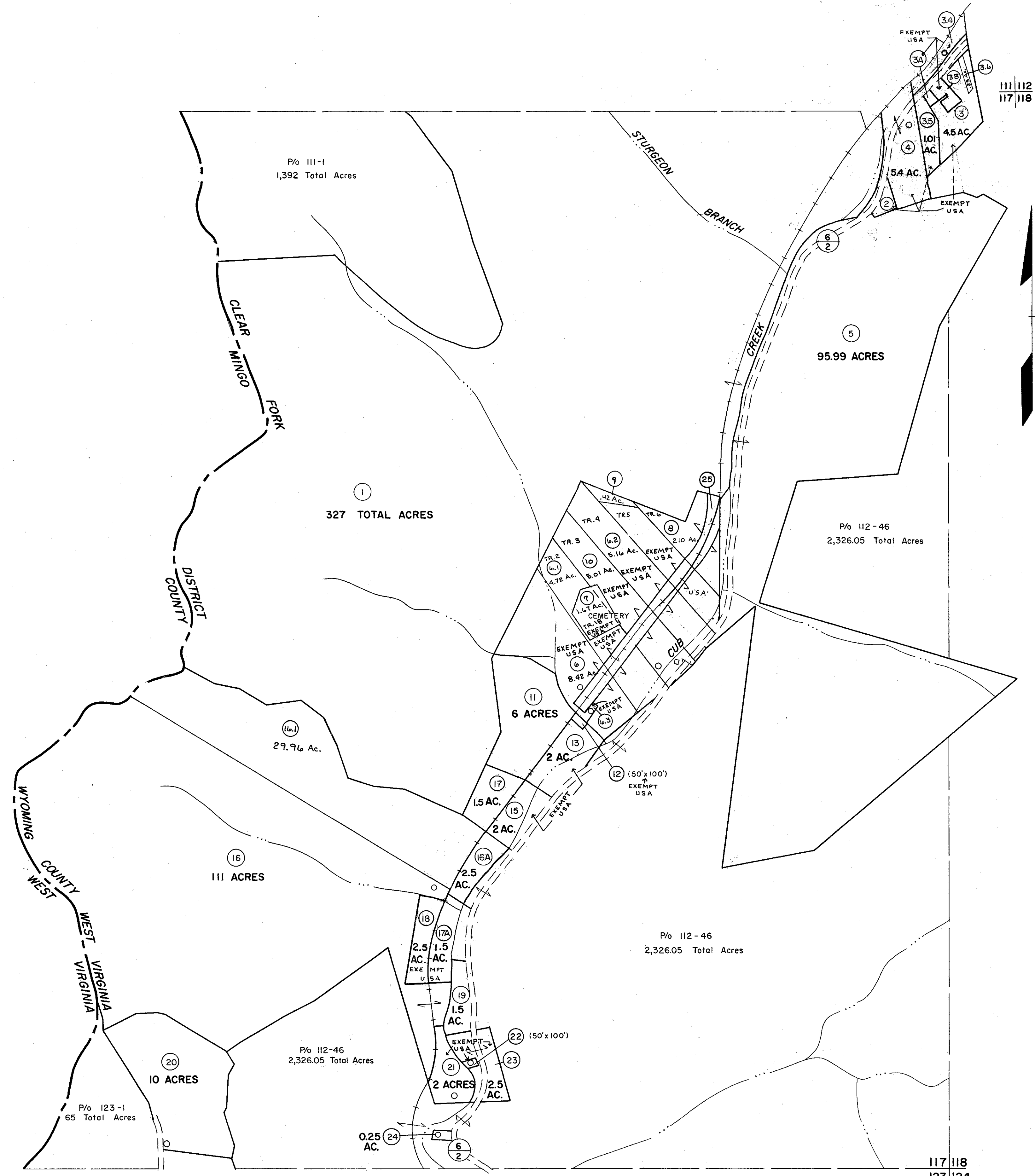


111  
117

111 112  
117 118



12  
P  
2

117  
123

117 118  
123 124

For Tax Purposes Only

Prepared by  
**MICHAEL BAKER, JR., INC.**  
 Consulting Engineers  
 Rochester, Pennsylvania

Legend	
Property line	—————
Edge of pavement or roadway	—————
Corporation line	—————
District line	—————
County line	—————
Original lot line	—————
Deed lot number	(15)
Parcel or index number	(22)
Improvement	o
Railroad	—————

Revisions			
1	3-1-64		17
2	2/27/75	J.C.	18
3	Revised to 7/18/79		19
4	O.G.I.S 9-20-95	J.E.B.	20
5			21
6			22
7			23
8			24

KEY MAP

**WYOMING COUNTY**  
 STATE OF WEST VIRGINIA  
 Office of Assessor

DISTRICT  
**CLEAR FORK**

SHEET NO: 117

Date, Aerial Photography: November, 1962 Date, Map: April, 1963  
 Photo No: \_\_\_\_\_ Scale: 1" = 400'