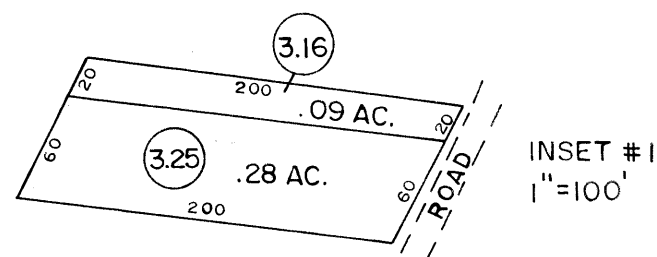


- 12 (210 X 400 X 50 X 500)
- 356 (25 X 95)
- 357 (100 X 350)
- 222 (120 X 70)
- 223 (100 X 100)
- 61 1.75 Ac.
- 62 (330 X 211 X 200 X 148)
- 317 (100 X 75)
- 318 (50 X 75)
- 319 (20 X 88-45)
- 320 (50 X 88-45)
- 211 (35 X 123)

P/O 112-46

P 12 | P 3

- 121 (65' X 80')
- 21 .28 ACRE
- 31 (100' X 370')
- 34 0.25 ACRE
- 36 (112' X 100' X 100' X 100')
- 55 (30' X 60' X 30' X 68')
- 314 (75 X 100)
- 315 (40 X 75 X 60 X 75)
- 316 (80 X 200)
- 319 (75 X 100 X 100 X 150)
- 313 (121 X 86 X 104 X 72)
- 314 (186 X 50 X 160 X 42)
- 315 (88 X 104 X 50 X 120)
- 322 (50 X 100)



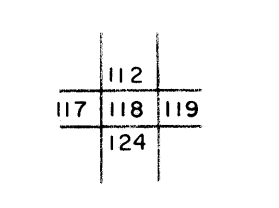
For Tax Purposes Only

Prepared by  
MICHAEL BAKER, JR., INC.  
Consulting Engineers  
Rochester, Pennsylvania

Legend	
Property line	Original lot line
Edge of pavement or roadway	Deed lot number
Corporation line	Parcel or index number
District line	Improvement
County line	Railroad

Revisions			
1	3-1-64	9	REV. TO 7-1-88
2	2127175 DLG JC	10	OGIS 2/19/94 DSH
3	Revised to 7-1-81	11	O.G.I.S 9-20-95 J.E.B
4	Revised to July 83	12	SLS INC. 1/2/98 DSW
5	Revised to 7-1-81	13	SLS INC. 11/11/98 DSW
6	Revised to 7-1-81	14	SLS INC. 1/11/00 DSW
7	Revised to 7-1-81	15	ESI 1/23/03 REK
8	OGIS 11-5-92 RO	16	

KEY MAP



WYOMING COUNTY  
STATE OF WEST VIRGINIA  
Office of Assessor

DISTRICT  
**CLEAR FORK**  
SHEET NO: 118  
Date, Aerial Photography: November, 1962 Date, Map: April, 1963  
Photo No: Scale: 1" = 400'

