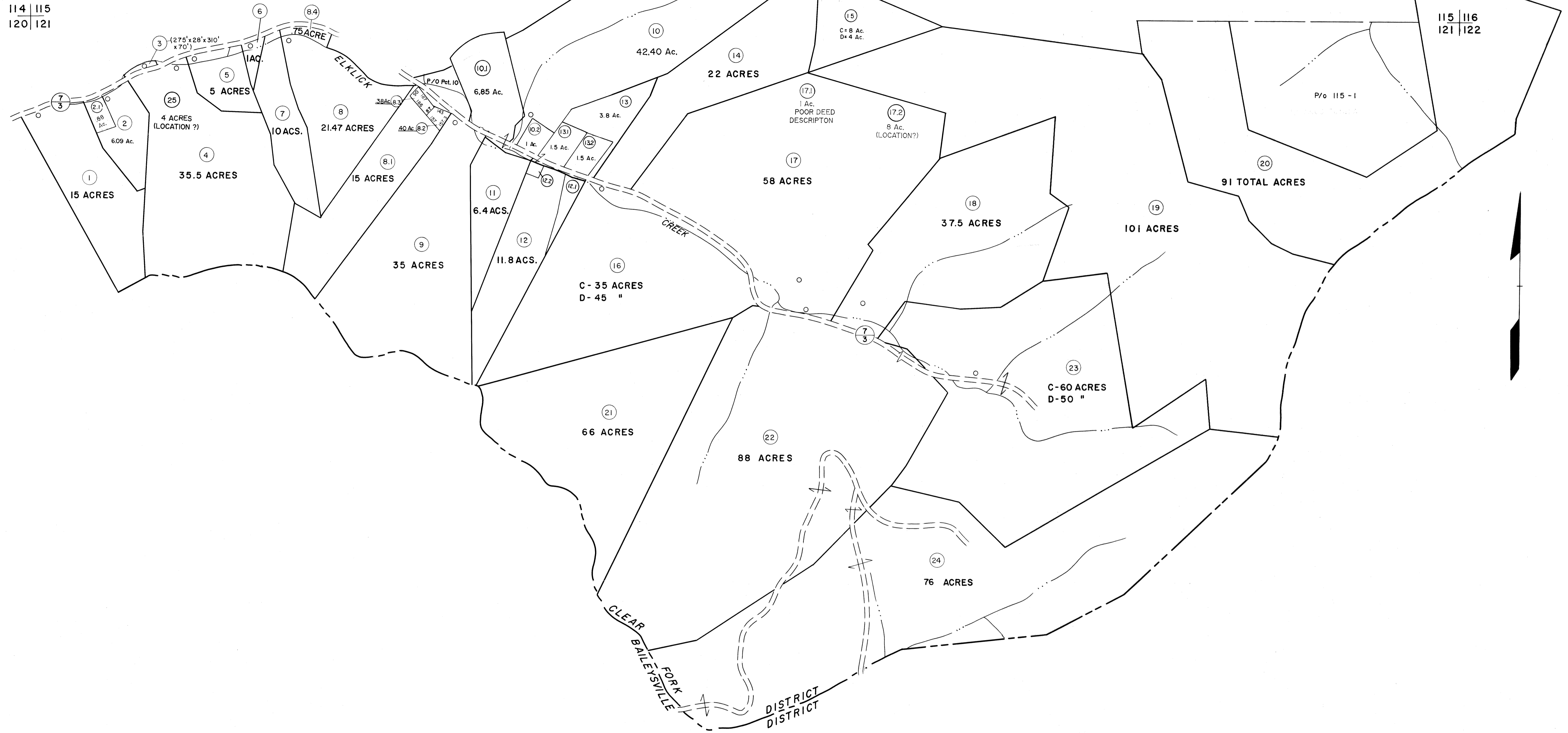


114 | 115
120 | 121

115 | 116
121 | 122



120 | 121

121 | 122

For Tax Purposes Only

Prepared by
MICHAEL BAKER, JR., INC.
Consulting Engineers
Rochester, Pennsylvania

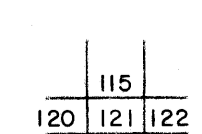
Legend

| | | | |
|-----------------------------|-------|------------------------|---------|
| Property line | ————— | Original lot line | ----- |
| Edge of pavement or roadway | ----- | Deed lot number | (15) |
| Corporation line | ----- | Parcel or index number | (19) |
| District line | ----- | Improvement | o |
| County line | ----- | Railroad | —+—+—+— |

Revisions

| No. | Description | Date | By | Checked |
|-----|-------------------|------|---------|---------|
| 1 | 3-1-64 | ESL | 1/23/03 | REK |
| 2 | 2/25/75 | JC | | |
| 3 | Revised to 7-1-81 | | | |
| 4 | REV TO 7-1-88 | NCS | | |
| 5 | OGIS 12/27/96 | SAJ | | |
| 6 | SLS INC. 1/2/98 | DSW | | |
| 7 | SLS INC. 01/19/00 | JWM | | |
| 8 | | | | |

KEY MAP



WYOMING COUNTY
STATE OF WEST VIRGINIA
Office of Assessor

DISTRICT

CLEAR FORK

SHEET NO: 121

Date, Aerial Photography: November, 1962 Date, Map: April, 1963
Photo No: Scale: 1" = 400'