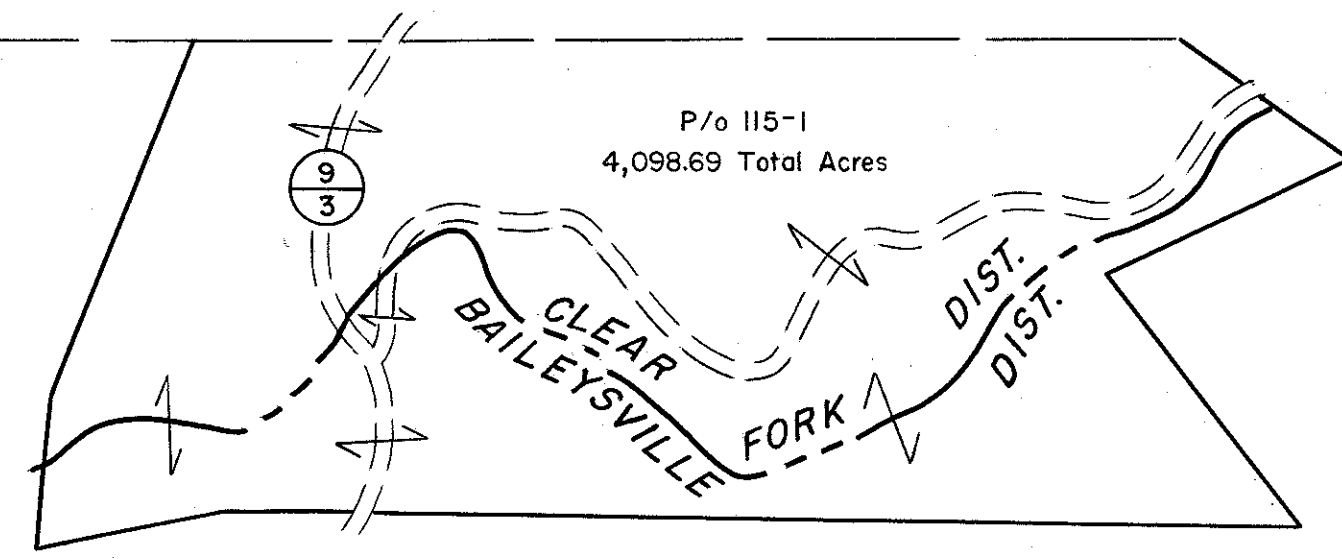


115 | 116
121 | 122



116 |
122 |

121 | 122

122 |

For Tax Purposes Only

Prepared by
MICHAEL BAKER, JR., INC.
Consulting Engineers
Rochester, Pennsylvania

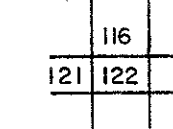
Legend

Property line	—————	Original lot line	-----
Edge of pavement or roadway	———	Deed lot number	(15)
Corporation line	-----	Parcel or index number	(99)
District line	-----	Improvement	o
County line	-----	Railroad	—+—+—+—

Revisions

1	5-1-64	9	17
2	Revised to 7-1-64	10	18
3		11	19
4		12	20
5		13	21
6		14	22
7		15	23
8		16	24

KEY MAP



WYOMING COUNTY

STATE OF WEST VIRGINIA

Office of Assessor

DISTRICT

CLEAR FORK

SHEET NO: 122

Date, Aerial Photography: November, 1962 Date, Map: April, 1963
Photo No: Scale: 1" = 400'