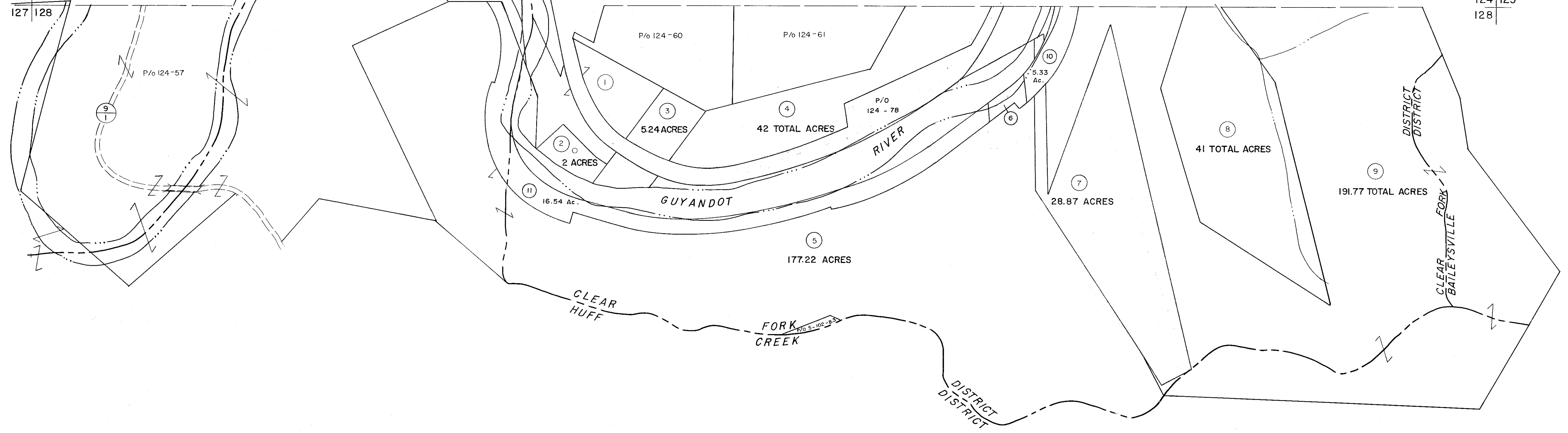


123 | 124
127 | 128

124 | 125
128



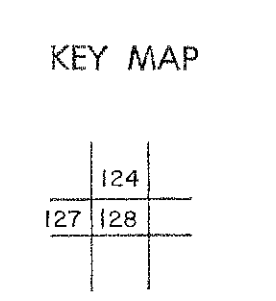
127 | 128

128

For Tax Purposes Only
 Prepared by
MICHAEL BAKER, JR., INC.
 Consulting Engineers
 Rochester, Pennsylvania

Legend	
Property line	—————
Edge of pavement or roadway	——— ———
Corporation line	-----
District line	- - - - -
County line	—————
Original lot line	—————
Deed lot number	(15)
Parcel or index number	(2)
Improvement	o
Railroad	—+—+—+—

Revisions			
1	3-1-64	9	17
2	Revised to 7181	10	18
3	O.S.I.S 9-20-95 J.E.B	11	19
4	SLS INC. 11/11/98 DSW	12	20
5		13	21
6		14	22
7		15	23
8		16	24



WYOMING COUNTY
 STATE OF WEST VIRGINIA
 Office of Assessor

DISTRICT	CLEAR FORK
SHEET NO: 128	
Date, Aerial Photography: November, 1962	Date, Map: April, 1963
Photo No:	Scale: 1" = 400'