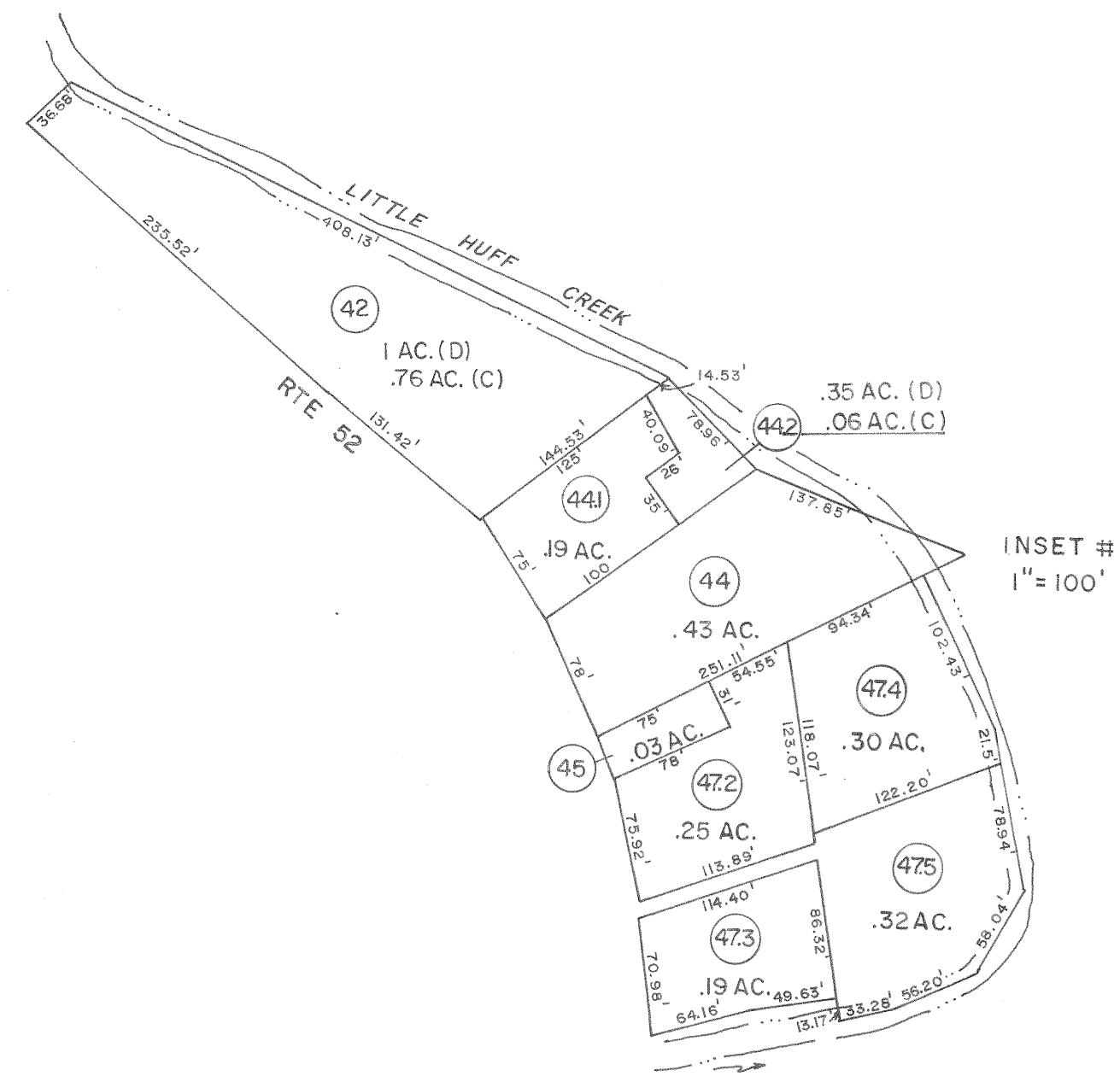
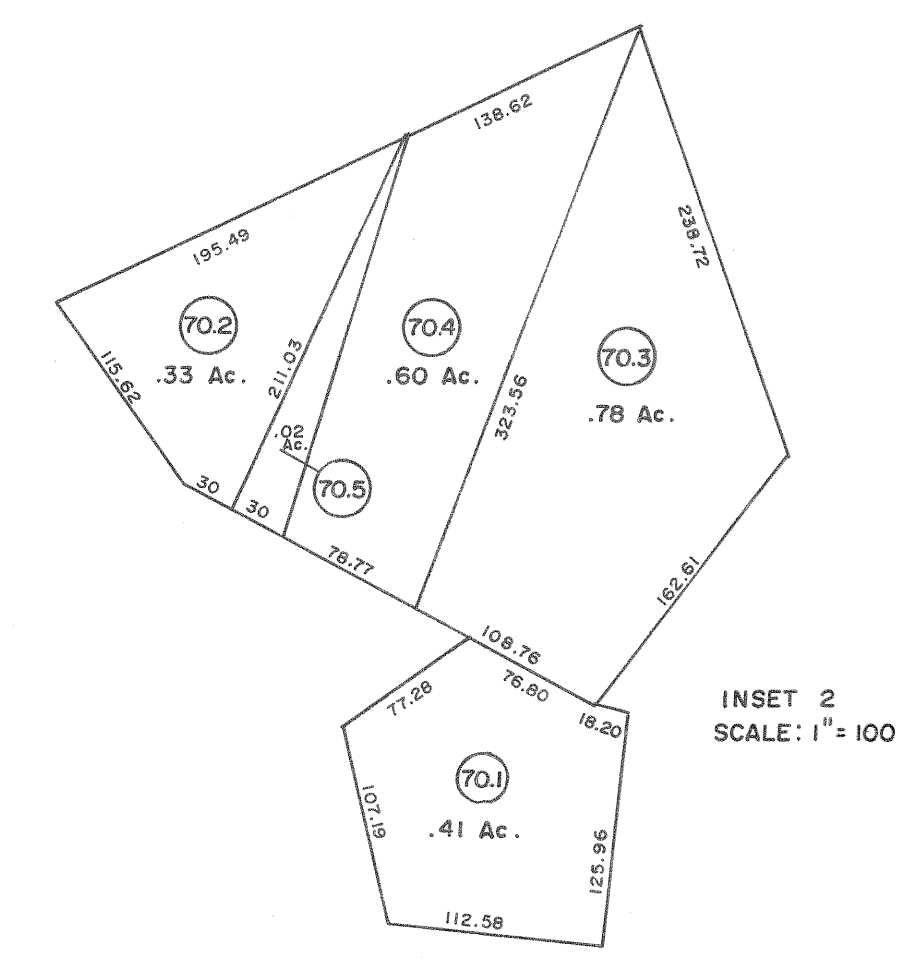


100

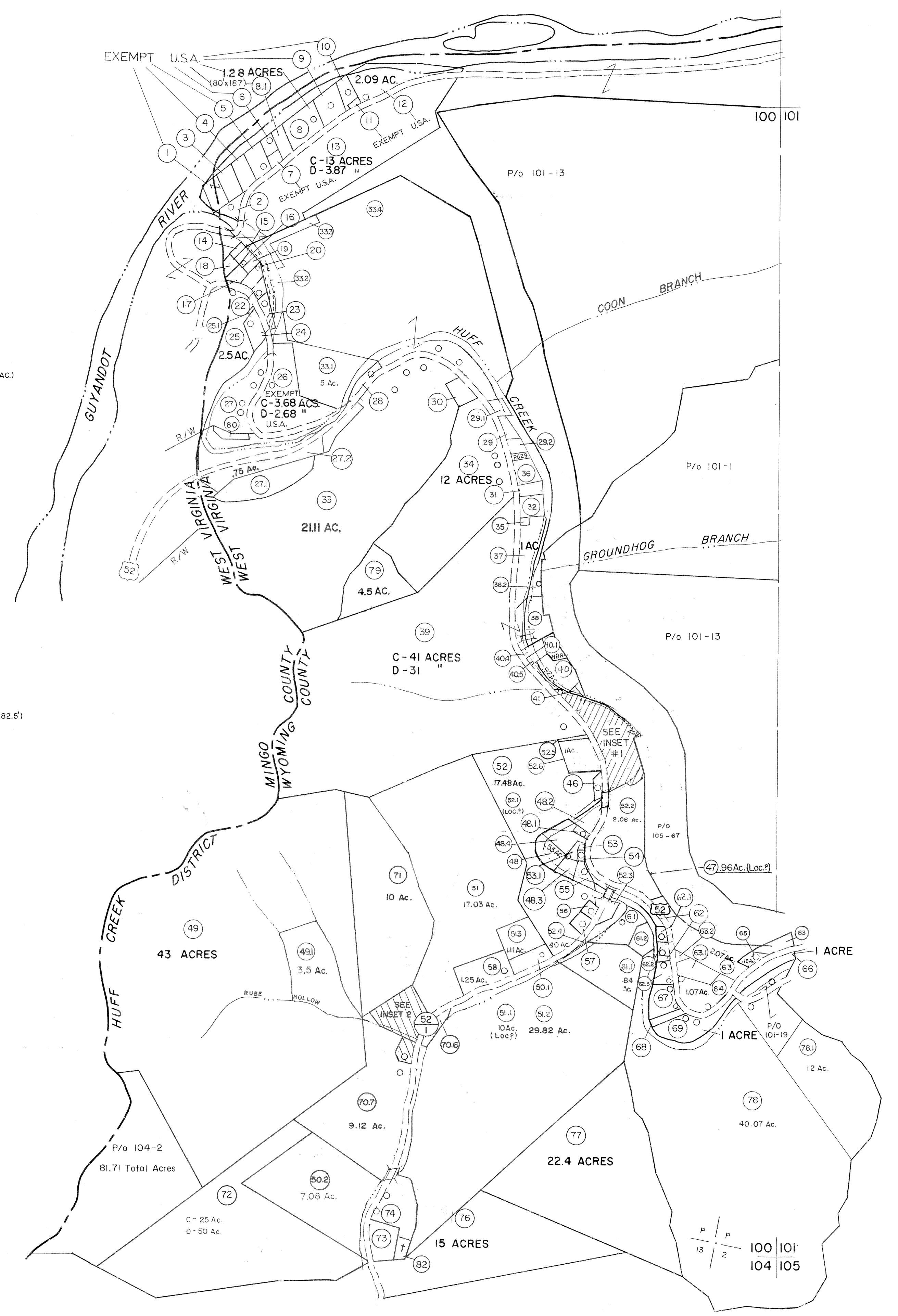


INSET #1
1" = 100'

- | | |
|---|---|
| 1 (110' x 200') | 29 (150' x 100') |
| 2 0.20 ACRE | 30 (173' x 85' x 150' x 85') (0.376 AC.) |
| 3 (110' x 200') | 31 (200' x 75') |
| 4 (110' x 200') | 32 (125' x 75') |
| 5 (110' x 200') | 35 (50' x 50') |
| 6 (80' x 100') | 36 (150' x 150') |
| 7 (80' x 87') | |
| 9 (174' x 200') | |
| 10 (17' x 200' x 78' x 150' x 85' x 50') | 46 0.25 ACRE |
| 11 (85' x 50') | 53 (30' x 33' x 38' x 30') |
| 14 (40' x 100') | 54 (65' x 30' x 65' x 33') |
| 15 (40' x 100') | 55 0.125 ACRE |
| 16 (40' x 100') | 56 (84' x 105' x 86' x 82') |
| 17 0.17 ACRE | 57 (71' x 54' x 114' x 94' x 105') |
| 18 0.125 ACRE | 58 (82.5' x 165') |
| 19 (40' x 100') | 59 (25' x 82.5') |
| 20 0.25 ACRE | 60 (225' x 165' x 250' x 82.5' x 25' x 82.5') |
| 21 0.25 ACRE | 65 (308' x 88' x 105' x 243' x 101') |
| 22 (70' x 98' x 98' x 50') | 67 (152' x 95' x 145' x 200') |
| 23 (180' x 66' x 220' x 8') | 68 (48' x 200') |
| 24 (175' x 98') | 73 (270' x 200' x 200' x 100') |
| 28 (200' x 80' x 200' x 75') | 75 (225' x 200' x 280') |
| 48 0.625 ACRE | |
| 48.1 (25' x 200' x 54' x 230') | 75.1 (12x50) .014 Ac. |
| 48.2 0.625 ACRE | 70.6 (167x24x167x33) .108 Ac. |
| 53.1 0.15 ACRE | 48.3 .25 Ac. |
| 53.2 (510x45x445x150x95) .717 Ac. | 48.4 .50 Ac. |
| 53.3 (365x53x350x83x37x210) .367 Ac. | 82 2.178 SQ. FT. |
| 53.4 (220x150x300x76) 1 Ac. | |
| 58.2 (20708x51.08 x175.75) .34 Ac. | |
| 58.3 (40x175.91x2.94x64.89x18.99) .14 Ac. | |
| 58.4 (511x2.94x4.25) .01 Ac. | |
| 40.9 (529x170.78x56.2x153.4) .26 Ac. | |
| 40.9 (25.5x177x116.28x71.3x14.9x170.78) .26Ac. | |
| 41.2 (174.62x141.32x161.63x307x61.25x184.31x1507x199.36) 51Ac | |
| 47.1 (61.99x81.30x47.2x94.59) .04 Ac. | |
| | |
| 52.3 (11781x91.49x103.37x74.86x169.35) .44 Ac. | |
| 63.1 (107.84x187.09x91.27x211.5x62.98) .56 Ac. | |
| 63.2 (125x107.84x93.79) .11 Ac. | |
| 52.3 (195.45 x 33.38 x192.61) .07 AC. | |



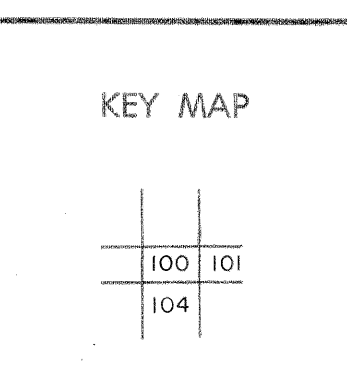
INSET 2
SCALE: 1" = 100'



For Tax Purposes Only
Prepared by
MICHAEL BAKER, JR., INC.
Consulting Engineers
Rochester, Pennsylvania

Legend	
Property line	---
Edge of pavement or roadway	---
Corporation line	---
District line	---
County line	---
Original lot line	---
Deed lot number	(15)
Parcel or index number	(19)
Improvement	o
Railroad	---

Revisions	
1 3-1-64	9 REV. TO 7-1-88 NCS
2 Rhodes 3-5-75 T.G.	10 OGIS 10/24/92 SAJ
3 Revised to 7-1-81	11 OGIS 2/20/94 DSH
4 July 1983 LM	12 O.G.I.S 9-20-95 J.E.B
5 Revised to 7-1-89	13 SLS INC. 1/2/98 DSW
6 July 1985	14 ESI 2/15/01 REK
7 Revised to 7-1-87	15 ESI 2/1/02 REK
8	16



WYOMING COUNTY
STATE OF WEST VIRGINIA
Office of Assessor

DISTRICT
HUFF CREEK
SHEET NO: 100
Date, Aerial Photography: November, 1962 Date, Map: April, 1963
Photo No: Scale: 1" = 400'