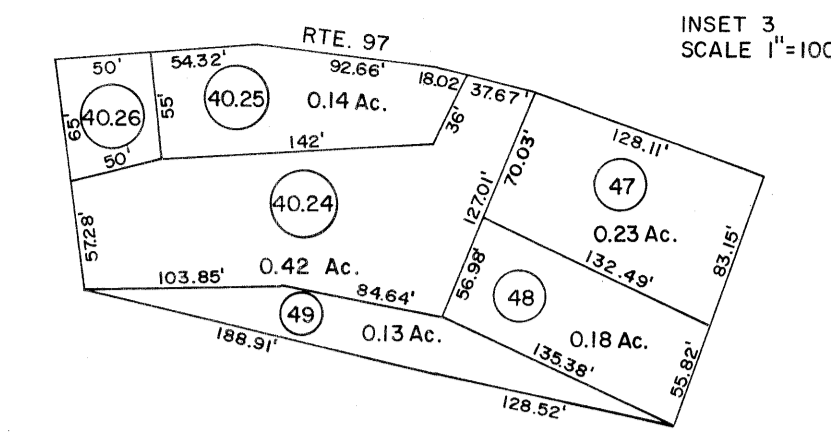
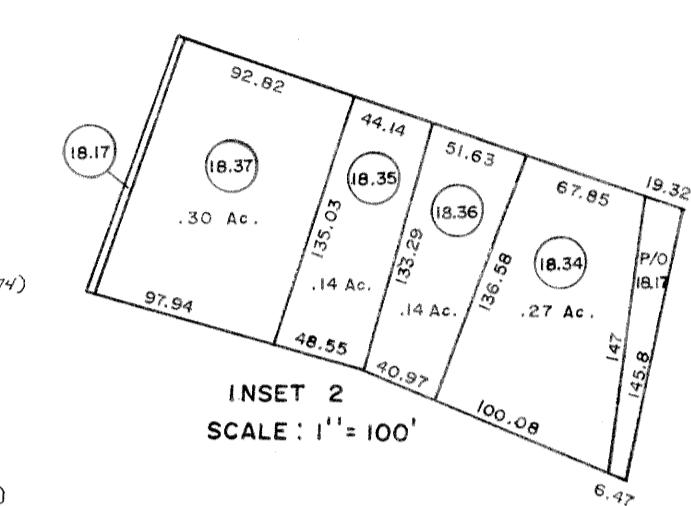
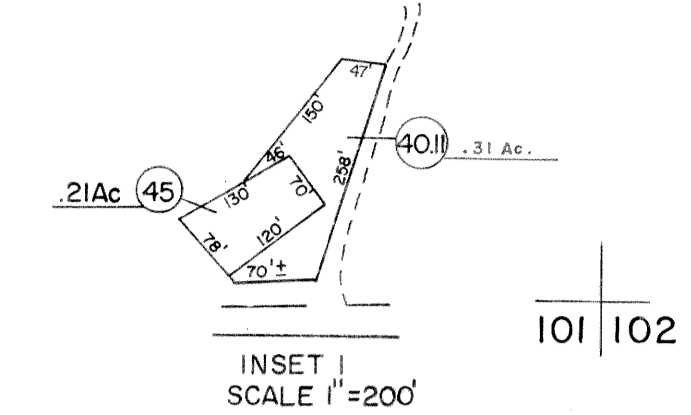


- (817) (278.16 x 145.8 x 147.52 x 149.66 x 138.97) .91 Ac.
- (818) (109.99 x 115.97 x 93.45 x 89.12 x 47.17 x 174.62 x 142.38) 49 Ac.
- (401) (182.56 x 95.9 x 171.29 x 80.76) .36 Ac.
- (402) (144.91 x 95.9 x 59.53 x 127.33) .23 Ac.
- (82) (98.19 x 149.02 x 89.49 x 74.6 x 184.2 x 20.33) .61 Ac.
- (403) (56.88 x 104.47 x 114.89 x 80.76 x 180.38 x 99.29 x 31 x 540.2 x 28.88) 67 Ac.
- (314) .316 Ac.
- (404) (113.08 x 346.6 x 231.26 x 138.64) .21 Ac.



- (811) (125.66 x 112.6 x 185.9781 x 102.41 x 222.46 x 17.49 x 102.9) .99 Ac.
- (812) (142.18 x 97.66 x 102.77 x 118.95 x 148.3 x 97.31) .59 Ac.
- (813) (20.36 x 82.58 x 121.09 x 73.61 x 89.39 x 102.77) .41 Ac.
- (814) (147.22 x 127.56 x 150.83 x 126.94) .43 Ac.
- (815) (140.66 x 125.95 x 149.81 x 127.56) .42 Ac.
- (402) (92.05 x 60' x 80 x 86.43) .12 Ac.
- (402) (139.49 x 44.08 x 107.95 x 60') .2 Ac.
- (402) (37.79 x 188 x 82.03 x 150.41 x 90.76 x 54.73) .32 Ac.

- (20) (200' x 200' x 195' x 66')
- (21) (100' x 200')
- (22) (80' x 150')
- (25) (100' x 231' x 80' x 200')
- (26) 0.25 ACRE
- (27) (36' x 220' x 250' x 168' x 154' x 100' x 236')
- (28) 0.25 ACRE
- (35) (70' x 150' x 132' x 175')
- (39) (59' x 115' x 87' x 81' x 36')
- (40.1) (103.70 x 28.14 x 24.40 x 41.30 x 76.48 x 101.4 x 18.74)
- (40.2) (271.73 x 87.07 x 179 x 88.4)
- (40.3) (310.84 x 85.44 x 149.61 x 140.32 x 106.4 x 50.8)

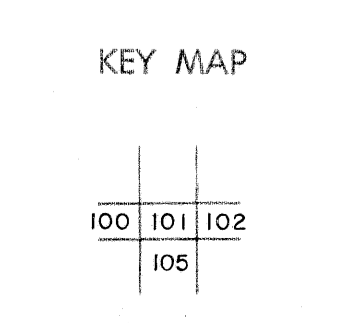


- (40.4) (110.54 x 18.88 x 103.44 x 8.46 x 92.15 x 18.63)
- (40.5) (200 x 98.40 x 200.13 x 99.05)
- (40.6) (101.19 x 95.99 x 107 x 95.40)
- (40.7) (190.35 x 143.32 x 164.11 x 133.34)
- (40.8) (149.57 x 125.76 x 144.46 x 143.32)
- (40.9) (212.06 x 105.12 x 220.60 x 119.84)
- (40.10) (211.55 x 71.13 x 211.24 x 74.34)
- (40.11) (28.62 x 92.43 x 183.92 x 78.70)
- (40.12) (90.21 x 54.91 x 83.18 x 20.04)
- (40.13) (144.18 x 108.97 x 104.30 x 86.43)
- (40.14) (111.26 x 70.81 x 83.30 x 44.05)
- (40.15) (172.21 x 59.08 x 123.04 x 65.58)
- (40.16) (100.44 x 63.39 x 100 x 99.3109)
- (40.17) (139.62 x 65.12 x 118.15 x 63.31)
- (40.18) (24.41 x 56.43 x 15.15 x 149.33 x 65.12)
- (40.19) (87.59 x 224.17 x 13.58 x 149.67 x 141.54 x 31.80 x 123.28)
- (40.20) (120.22 x 47.23 x 135.01 x 49.92) 14 Ac.
- (40.21) (53.55 x 44.08 x 50.23 x 50.44) 0.6 Ac.
- (40.22) (80.21 x 56.91 x 83.31 x 42.06) .09 Ac.
- (40.23) (19 x 35) .03 ±

For Tax Purposes Only  
 Prepared by  
**MICHAEL BAKER, JR., INC.**  
 Consulting Engineers  
 Rochester, Pennsylvania

Legend	
Property line	—
Edge of pavement or roadway	—
Corporation line	—
District line	—
County line	—
Original lot line	—
Dead lot number	(15)
Parcel or index number	(40)
Improvement	(15)
Railroad	(15)

Revisions			
1	3-1-64	9	REV. TO 7-1-88 NCS 17
2	3-6-75 T.G.	10	OGIS 2/21/93 DSH 18
3	Revised to 7-1-81	11	O.G.I.S 9-20-95 J.E.B 19
4	July 83	12	OGIS 1/1/97 SAJ 20
5	Revised to 7-1-84	13	SLS INC. 1/2/98 DSW 21
6	July 1985	14	SLS INC. 11/2/98 DSW 22
7	Revised to 7-1-87	15	SLS INC. 1/21/00 DSW 23
8		16	ES 1 2/15/01 REK 24



**WYOMING COUNTY**  
 STATE OF WEST VIRGINIA  
 Office of Assessor

DISTRICT  
**HUFF CREEK**  
 SHEET NO: 101  
 Date, Aerial Photography: November, 1962 Date, Map: April, 1963  
 Photo No: Scale: 1"=400'