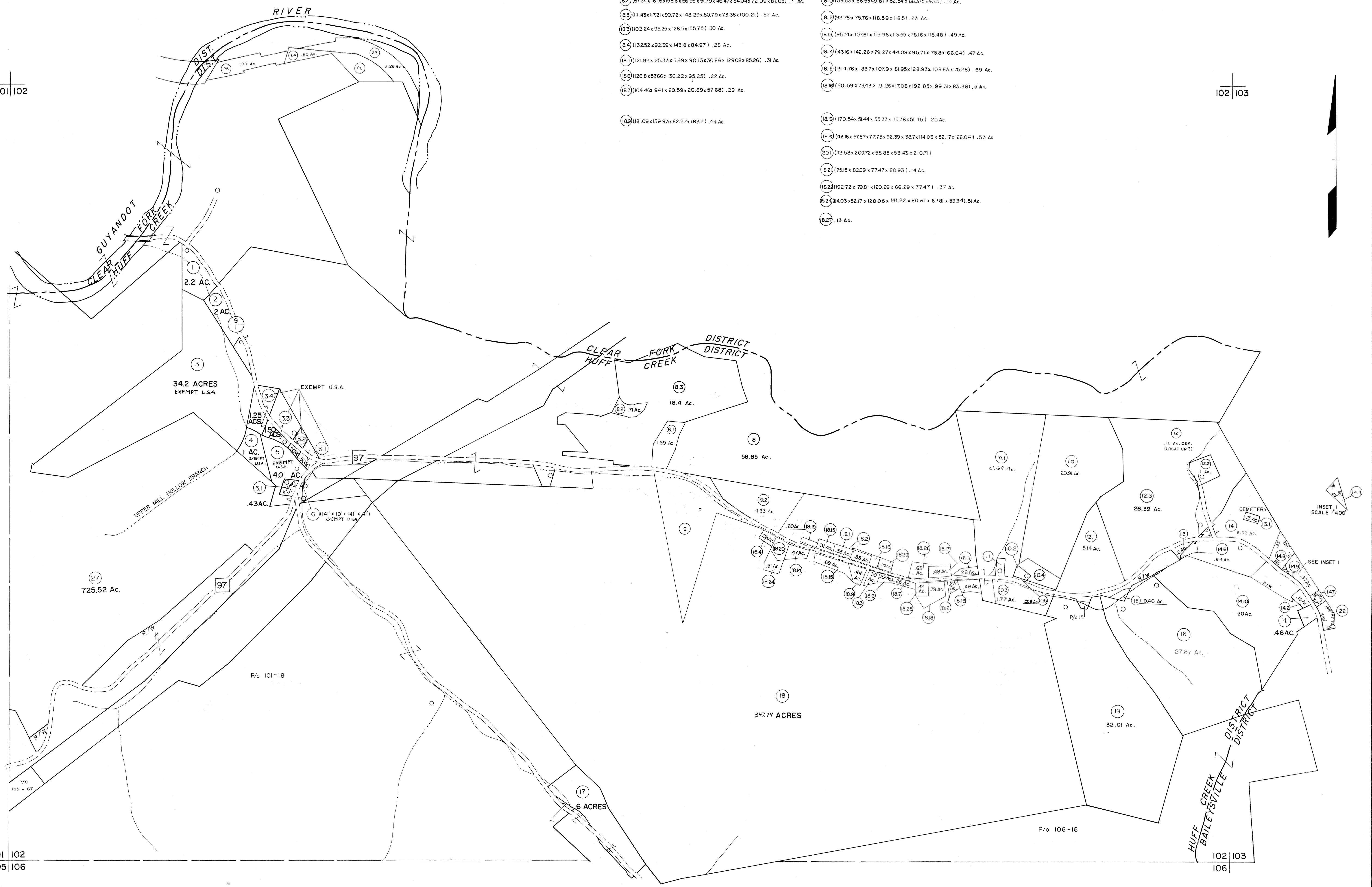


101 102

102 103

101 102
105 106

102 103
106



- (82) (6734x1616x586x6695x5179x4647x8404x72.09x87.03) .71 Ac.
- (83) (111.45x1172x90.72x148.29x50.79x73.38x100.21) .57 Ac.
- (83) (102.24x95.25x128.5x155.75) .30 Ac.
- (84) (132.52x92.39x143.8x84.97) .28 Ac.
- (85) (121.92x25.33x5.49x90.13x30.86x129.08x85.26) .31 Ac.
- (86) (126.8x5766x136.22x95.25) .22 Ac.
- (87) (104.46x941x60.59x26.89x57.68) .29 Ac.
- (89) (181.09x159.93x62.27x183.7) .44 Ac.
- (1810) (53.53x66.5x49.87x52.54x66.37x24.25) .14 Ac.
- (1812) (92.78x75.76x118.59x118.5) .23 Ac.
- (1813) (95.74x107.61x115.96x113.55x75.16x115.48) .49 Ac.
- (1814) (43.16x142.26x79.27x44.09x95.71x78.8x166.04) .47 Ac.
- (1815) (314.76x183.7x107.9x81.95x128.93x108.63x75.28) .69 Ac.
- (1816) (201.59x79.43x191.26x170.8x192.85x199.31x83.38) .5 Ac.
- (1819) (170.54x51.44x55.33x115.78x51.45) .20 Ac.
- (182) (43.16x57.87x77.75x92.39x38.7x114.03x52.17x166.04) .53 Ac.
- (20) (112.58x209.72x55.85x53.43x210.71)
- (182) (75.15x82.69x77.47x80.93) .14 Ac.
- (1823) (192.72x79.81x120.69x66.29x77.47) .37 Ac.
- (1824) (1403x52.17x128.06x141.22x80.61x62.81x53.34) .51 Ac.
- (827) .13 Ac.

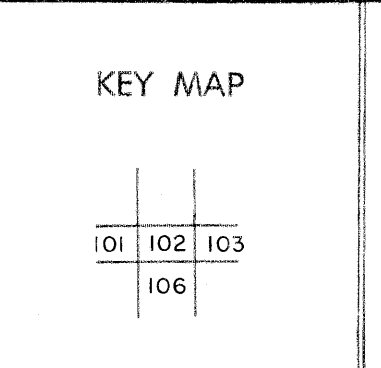
For Tax Purposes Only
 Prepared by
MICHAEL BAKER, JR., INC.
 Consulting Engineers
 Rochester, Pennsylvania

Legend

Property line	—	Original lot line	- - - - -
Edge of pavement or roadway	—	Deed lot number	(151)
Corporation line	—	Parcel or index number	(99)
District line	—	Improvement	o
County line	—	Railroad	+

Revisions

1	3-1-64	9	OGIS	10/24/92	SAJ	17
2	3-6-75	10	OGIS	2/21/94	DSH	18
3	Revised to 7-1-81	11	O.G.I.S	9-20-95	J.E.B	19
4	July 1988	12	OGIS	1/1/97	SAJ	20
5	Revised to 7-1-81	13	SLS INC.	1/2/98	DSW	21
6	Revised to 7-1-81	14	SLS INC.	11/12/98	DSW	22
7	REV. TO 7-1-88	15	ESI	2/15/01	REK	23
8		16				24



WYOMING COUNTY
 STATE OF WEST VIRGINIA
 Office of Assessor

DISTRICT HUFF CREEK
SHEET NO: 102
 Date, Aerial Photography: November, 1962 Date, Map: April, 1963
 Photo No: Scale: 1" = 400'