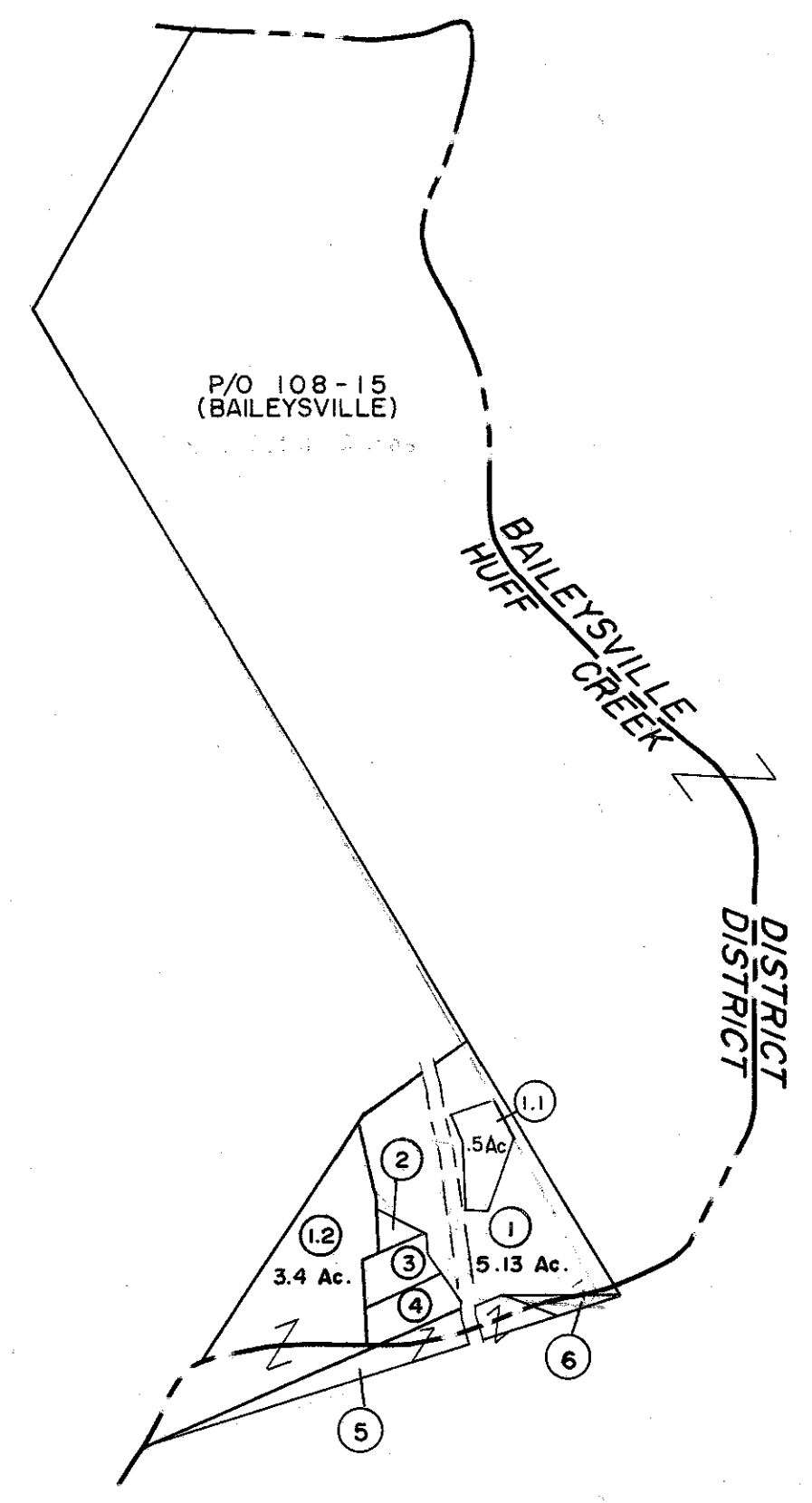


102|103

103

(1) (166.64 x 63.71 x 100.21 x 87.14 x 177.49 x 47.69) .50 Ac



102|103
106

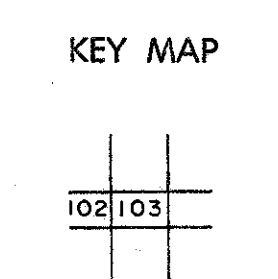
103

For Tax Purposes Only

Prepared by
MICHAEL BAKER, JR., INC.
Consulting Engineers
Rochester, Pennsylvania

Legend	
Property line	Original lot line
Edge of pavement or roadway	Deed lot number
Corporation line	Parcel or index number
District line	Improvement
County line	Railroad

Revisions			
1	3-1-64	9	17
2	Revised to 7-1-81	10	18
3	O.G.I.S. 9-20-94 J.E.B.	11	19
4	OGIS 12/27/96 SAJ	12	20
5		13	21
6		14	22
7		15	23
8		16	24



WYOMING COUNTY
STATE OF WEST VIRGINIA
Office of Assessor

DISTRICT
HUFF CREEK

SHEET NO: 103

Date, Aerial Photography: November, 1962 Date, Map: April, 1963
Photo No: Scale: 1"=400'