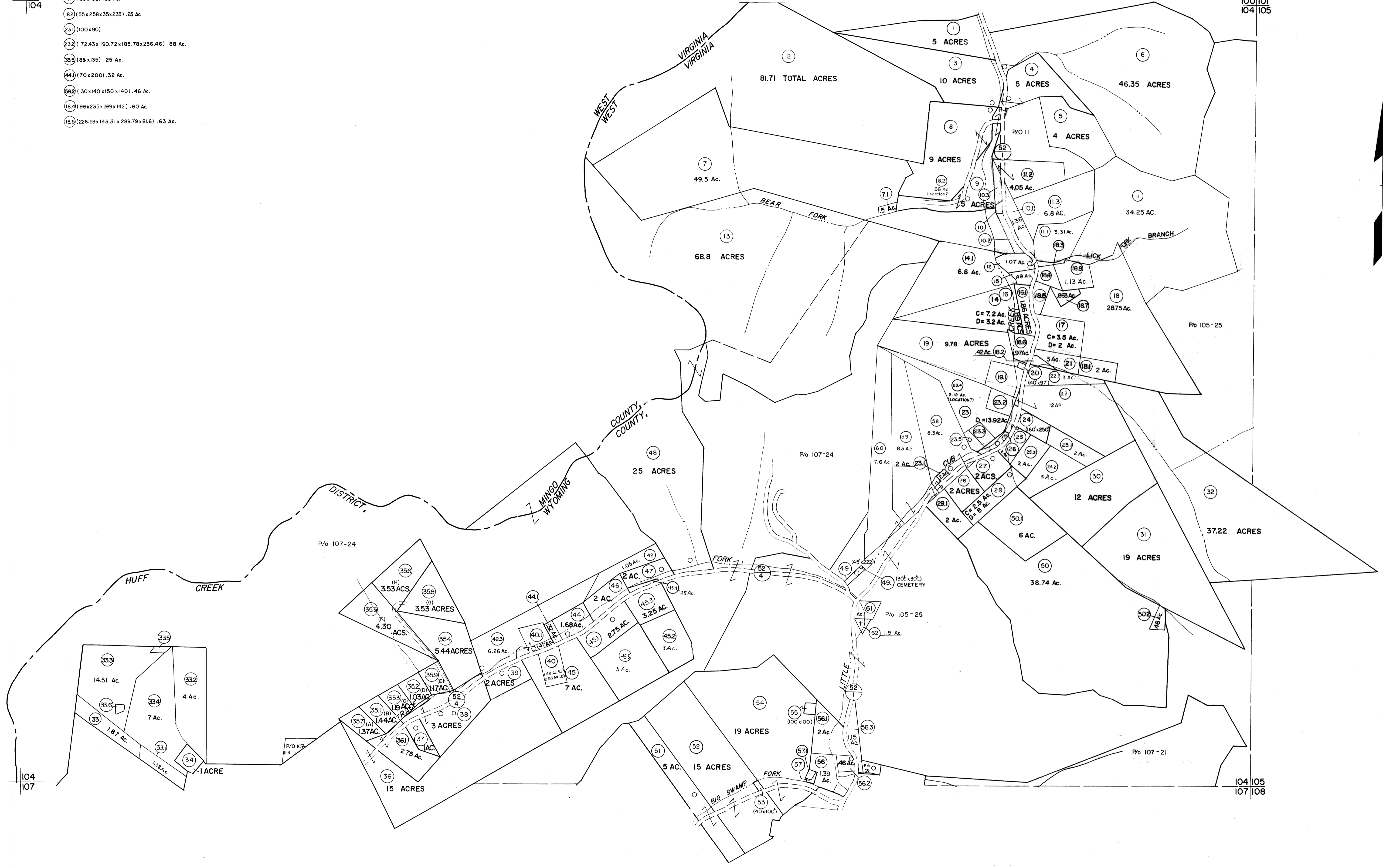


100
104

- 71 (80x160) .50 Ac.
- 182 (55x258x35x233) .25 Ac.
- 23 (100x90)
- 232 (172.43x190.72x185.78x236.46) .88 Ac.
- 33.5 (85x135) .25 Ac.
- 44 (70x200) .32 Ac.
- 56.2 (130x140x150x140) .46 Ac.
- 18.4 (96x235x269x142) .60 Ac.
- 18.9 (226.59x143.31x289.79x81.6) .63 Ac.

100 101
104 105



104
107

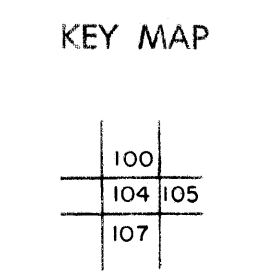
104 105
107 108

For Tax Purposes Only

Prepared by
MICHAEL BAKER, JR., INC.
 Consulting Engineers
 Rochester, Pennsylvania

Legend	
Property line	—————
Edge of pavement or roadway	—————
Corporation line	—————
District line	—————
County line	—————
Original lot line	-----
Dead lot number	(15)
Parcel or index number	(19)
Improvement	o
Railroad	—————

Revisions			
1	D-1-G-4	9	OGIS 10/23/92 SAJ
2	3-7-75 T.C.	10	OGIS 2/21/94 DSH
3	Corrected to 7-1-81	11	O.G.I.S 9-20-95 J.E.B
4	July 1983 L.M.	12	OGIS 12/29/96 SAJ
5	July 1985 J.H.	13	SLS INC. 11/12/98 DSW
6	Revised to 7-1-87	14	ESI 2/20/01 REK
7	REV. TO 7-1-88	15	ESI 2/5/02 .REK
8		16	



WYOMING COUNTY
 STATE OF WEST VIRGINIA
 Office of Assessor

DISTRICT **HUFF CREEK**

SHEET NO: 104

Date, Aerial Photography: November, 1962 Date, Map: April, 1963
 Photo No. Scale: 1" = 400'