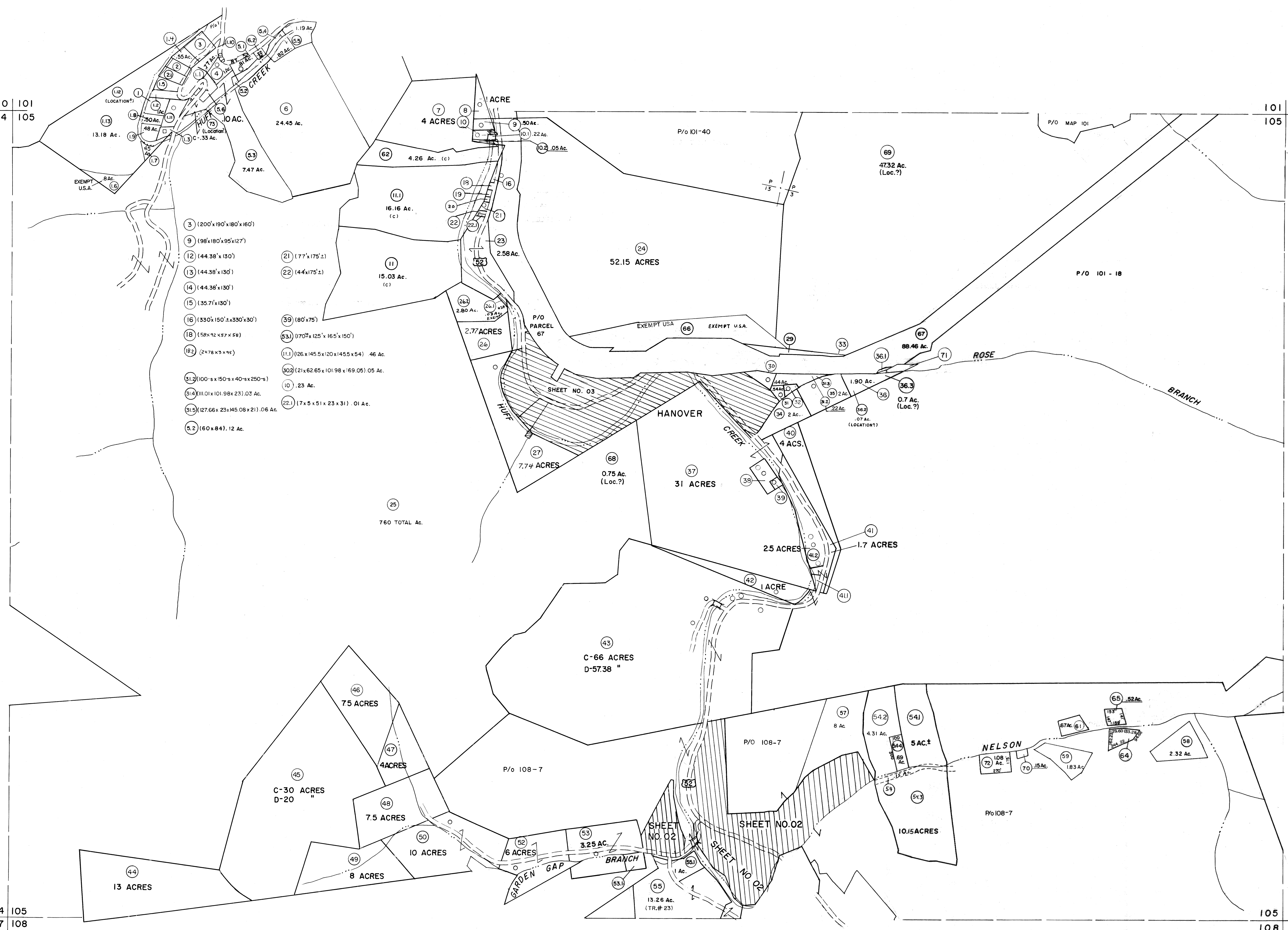


100 101
104 105

101 102
105 106

104 105
107 108

105 106
108 109



- 3 (200'x190'x180'x160')
- 9 (98'x180'x95'x127')
- 12 (44.38'x130')
- 13 (44.38'x130')
- 14 (44.38'x130')
- 15 (35.7'x130')
- 16 (330'x150'x330'x30')
- 18 (158'x12'x57'x56')
- 18 (2x78'x3'x14')
- 31 (100'x150'x40'x250')
- 31 (111.01'x101.98'x23'.02' Ac.)
- 31 (127.66'x23'x145.08'x21'.06' Ac.)
- 5.2 (60'x84'). 12 Ac.
- 21 (77'x175')
- 22 (44'x175')
- 39 (80'x75')
- 53 (170'x125'x165'x150')
- 11 (86'x145.5'x120'x145.5'x54'). 46 Ac.
- 90 (21'x62.65'x101.98'x169.05'). 05 Ac.
- 10'. 23 Ac.
- 22 (7'x5'x51'x23'x31'). .01 Ac.

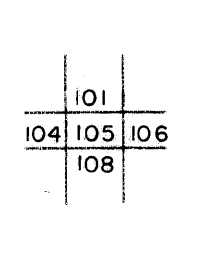
Legend

Property line	-----	Original lot line	-----
Edge of pavement or roadway	-----	Deed lot number	(15)
Corporation line	-----	Parcel or index number	(99)
District line	-----	Improvement	o
County line	-----	Railroad	-----

Revisions

1	3-1-64	9	REV. TO 7-1-88	NCS	17	ES1	1/28/03	REK
2	3-7-75	10	OGIS 10/23/92	SAJ	18			
3	Revised to 7-1-88	11	OGIS 2/21/94	DSH	19			
4	July 1983	12	O.G.I.S 9-20-95	J.E.B.	20			
5	Revised to 7-1-88	13	OGIS 12/31/96	SAJ	21			
6	July 1985	14	ES1 2/20/01	REK	22			
7	Revised to 7-1-87	15	ES1 2/5/01	REK	23			
8		16			24			

KEY MAP



For Tax Purposes Only
 Prepared by
MICHAEL BAKER, JR., INC.
 Consulting Engineers
 Rochester, Pennsylvania

WYOMING COUNTY
 STATE OF WEST VIRGINIA
 Office of Assessor

DISTRICT
HUFF CREEK
 SHEET NO: 105
 Date, Aerial Photography: November, 1962 Date, Map: April, 1963
 Photo No: Scale: 1" = 400'