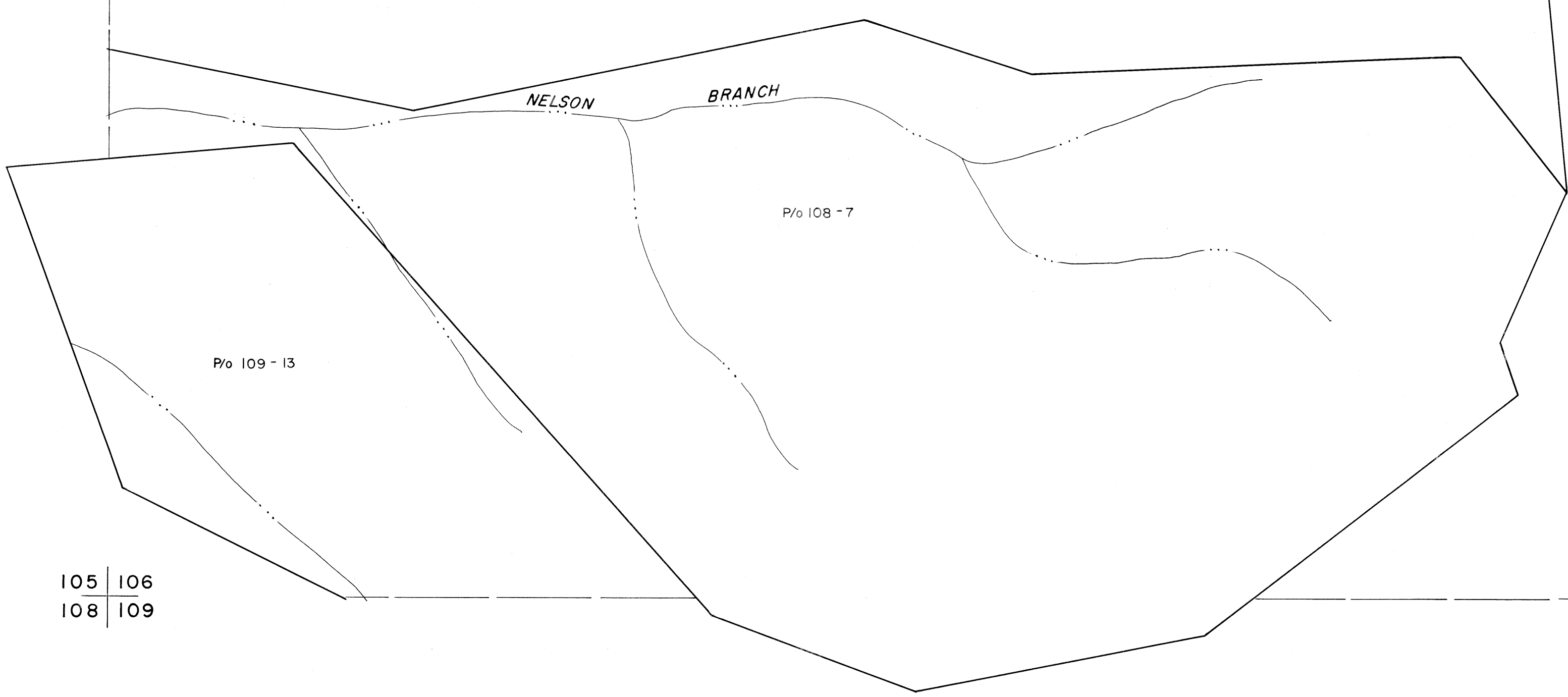
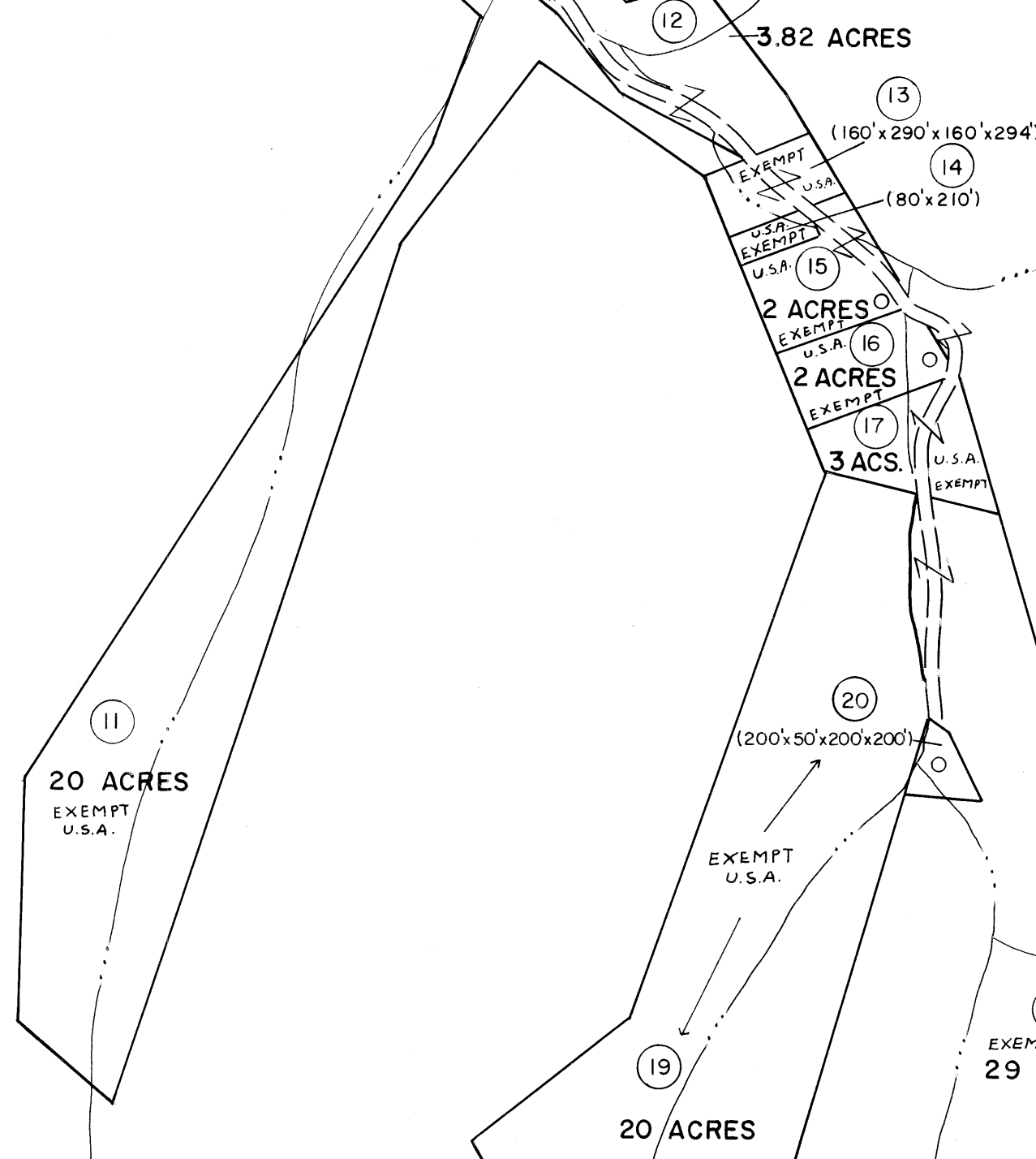
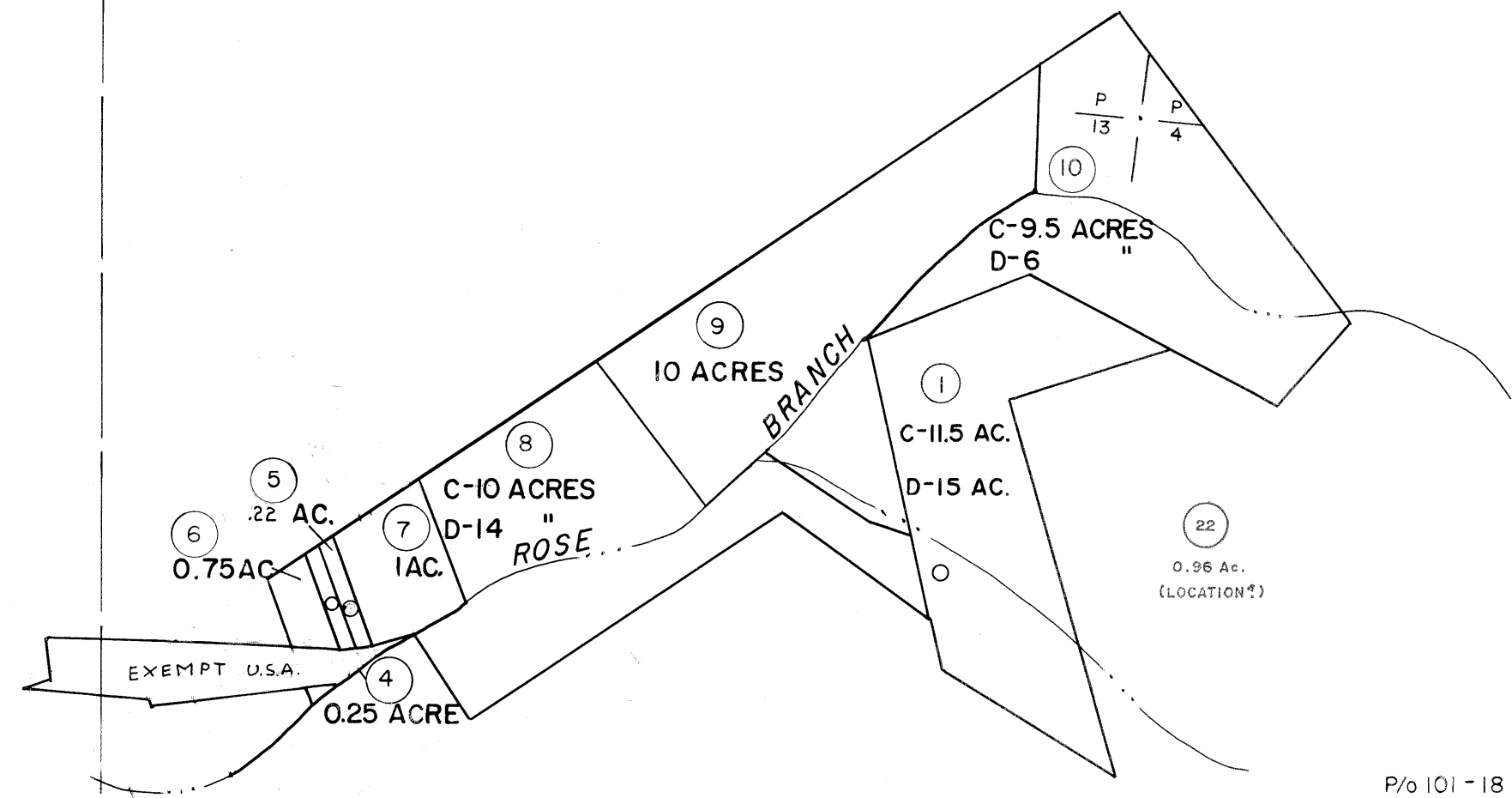


101 | 102
105 | 106

102 | 103
106 | 106



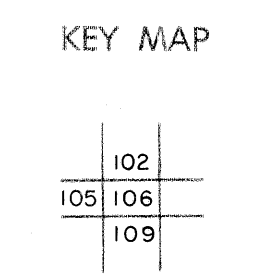
105 | 106
108 | 109

106 | 106
109 | 110

For Tax Purposes Only
 Prepared by
 MICHAEL BAKER, JR., INC.
 Consulting Engineers
 Rochester, Pennsylvania

Legend	
Property line	—————
Edge of pavement or roadway	———
Corporation line	-----
District line	- - - - -
County line	-----
Original lot line	-----
Deed lot number	(15)
Parcel or index number	(99)
Improvement	o
Railroad	+

Revisions	
1	3-1-64
2	3-7-75 T.G.
3	Revised to 7-1-81 DSH
4	Revised to 7-1-81 DSH
5	July 1985 JEL
6	
7	OGIS 2/21/94 DSH
8	OGIS 9-20-95 J.E.B



WYOMING COUNTY
 STATE OF WEST VIRGINIA
 Office of Assessor

DISTRICT
HUFF CREEK
 SHEET NO: 106
 Date, Aerial Photography: November, 1962 Date, Map: April, 1963
 Photo No: Scale: 1" = 400'