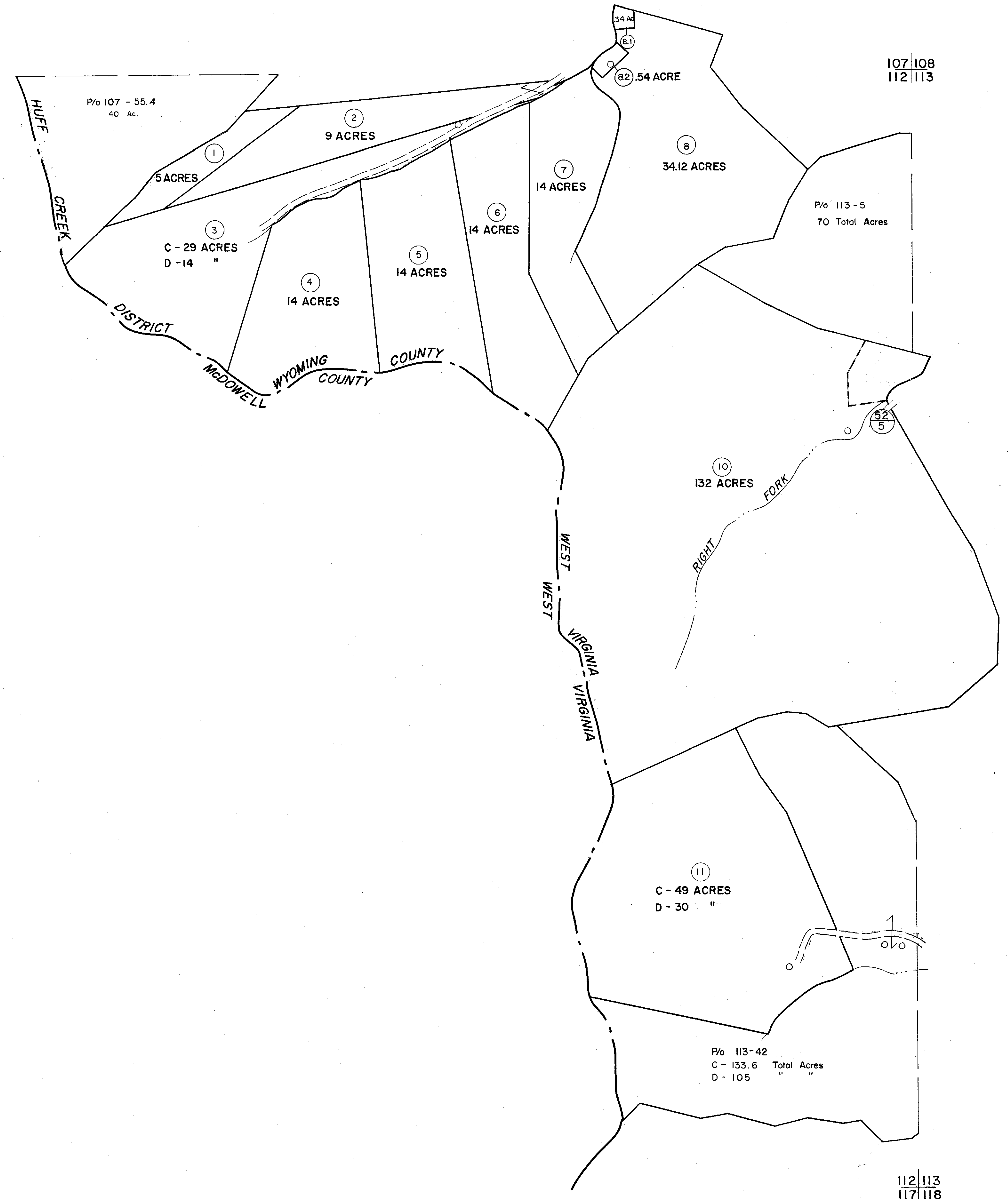


107
112

107 108
112 113



112
117

112 113
117 118

For Tax Purposes Only

Prepared by
MICHAEL BAKER, JR., INC.
Consulting Engineers
Rochester, Pennsylvania

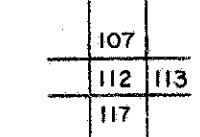
Legend

Property line	-----	Original lot line	-----
Edge of pavement or roadway	-----	Deed lot number	(15)
Corporation line	-----	Parcel or index number	(16)
District line	-----	Improvement	(17)
County line	-----	Railroad	(18)

Revisions

1	3-1-64	9		17	
2	3-10-75	T.G.		18	
3	Revised to 7-1-81	D.F.		19	
4	Revised to 7-1-88	D.F.		20	
5	REV TO 7-1-88	NCS		21	
6				22	
7				23	
8				24	

KEY MAP



WYOMING COUNTY

STATE OF WEST VIRGINIA

Office of Assessor

DISTRICT

HUFF CREEK

SHEET NO: 112

Date, Aerial Photography: November, 1962 Date, Map: April, 1963
Photo No: Scale: 1" = 400'