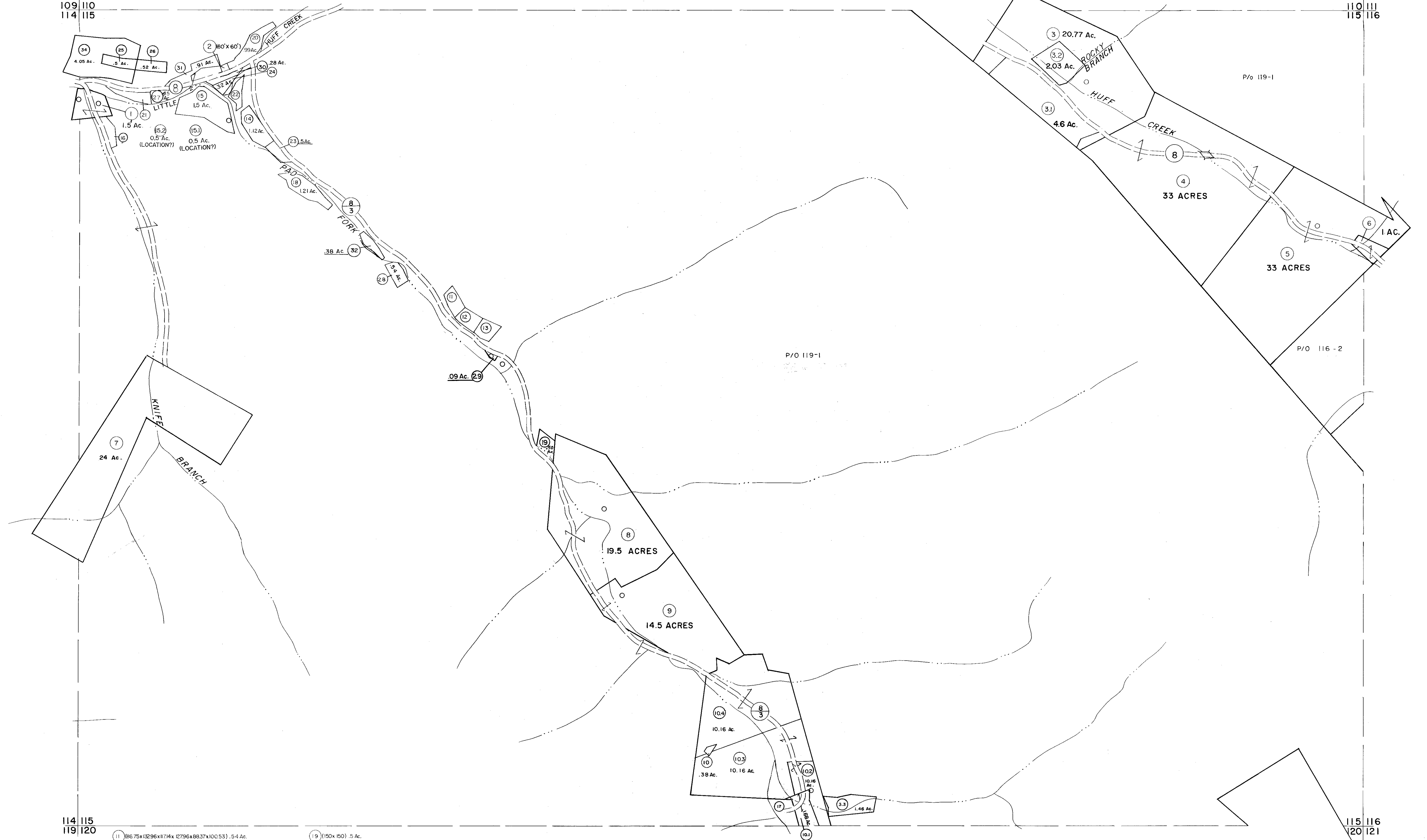


109 110  
114 115

110 111  
115 116



114 115  
119 120

115 116  
120 121

- 11 106.75x1296x1174x12796x8837x100.53 .54 Ac.
- 12 1046.92x3463x13885x148.63x55.24x117.14 .56 Ac.
- 13 1088.91x65.09x138.85x169.75x62.72 .52 Ac.
- 14 1100.5x175.59x33.99x1075.4x176.5x47.01 .36 Ac.
- 17 1570x209x390 .84 Ac.
- 19 1150x150 .5 Ac.
- 21 151.95x1124x134.05x104.02x153.7x171.98x77.31 .50 Ac.
- 22 138.74x153.58x75.84x79.65x77.56x143.54x124.81.53 Ac.

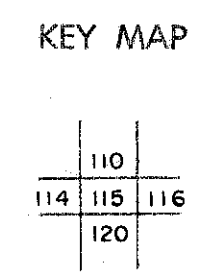
**For Tax Purposes Only**  
 Prepared by  
**MICHAEL BAKER, JR., INC.**  
 Consulting Engineers  
 Rochester, Pennsylvania

**Legend**

Property line	—————	Original lot line	-----
Edge of pavement or roadway	-----	Deed lot number	(15)
Corporation line	-----	Parcel or index number	(19)
District line	-----	Improvement	o
County line	-----	Railroad	+

**Revisions**

1	3-1-64	9	OGIS 2/21/94	DSH	17
2	Revised to 7-1-81	10	O.G.I.S 9-20-95	J.E.B	18
3	July 1983	11	SLS INC.	11/12/98	DSW
4	Revised to 7-1-81	12	SLS INC.	1/21/00	DSW
5	July 1985	13			21
6	Revised to 7-1-81	14			22
7	OGIS 10/25/92	15			23
8		16			24



**WYOMING COUNTY**  
 STATE OF WEST VIRGINIA  
 Office of Assessor

DISTRICT  
**HUFF CREEK**  
 SHEET NO: 115  
 Date, Aerial Photography: November, 1962 Date, Map: April, 1963  
 Photo No: Scale: 1" = 400'