

100|101

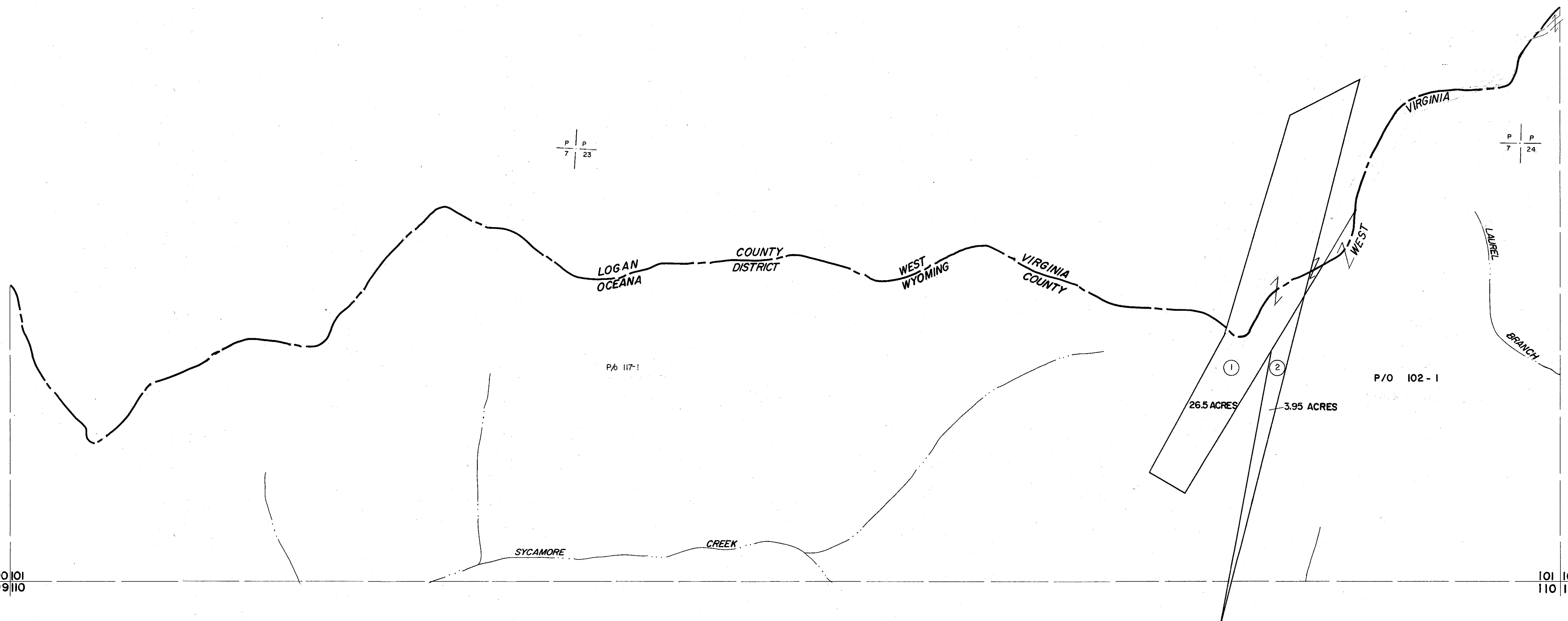
101|102

100|101
109|110

101|102
110|111

P P
7 23

P P
7 24



For Tax Purposes Only
 Prepared by
MICHAEL BAKER, JR., INC.
 Consulting Engineers
 Rochester, Pennsylvania

Legend	
Property line	———
Edge of pavement or roadway	———
Corporation line	———
District line	———
County line	———
Original lot line	-----
Deed lot number	(15)
Parcel or index number	(20)
Improvement	○
Railroad	—+—+—+—

Revisions			
1	3-1-64	9	17
2	To JULY 1981 C.P.	10	18
3	To 7-1-84 C.P.	11	19
4	July 1985	12	20
5	Revised 7-1-87	13	21
6	SLS INC. 1/5/98 DSW	14	22
7		15	23
8		16	24

KEY MAP

WYOMING COUNTY
 STATE OF WEST VIRGINIA
 Office of Assessor

DISTRICT **OCEANA**
SHEET NO: 101
 Date, Aerial Photography: November, 1962 Date, Map: April, 1963
 Photo No: Scale: 1" = 400'