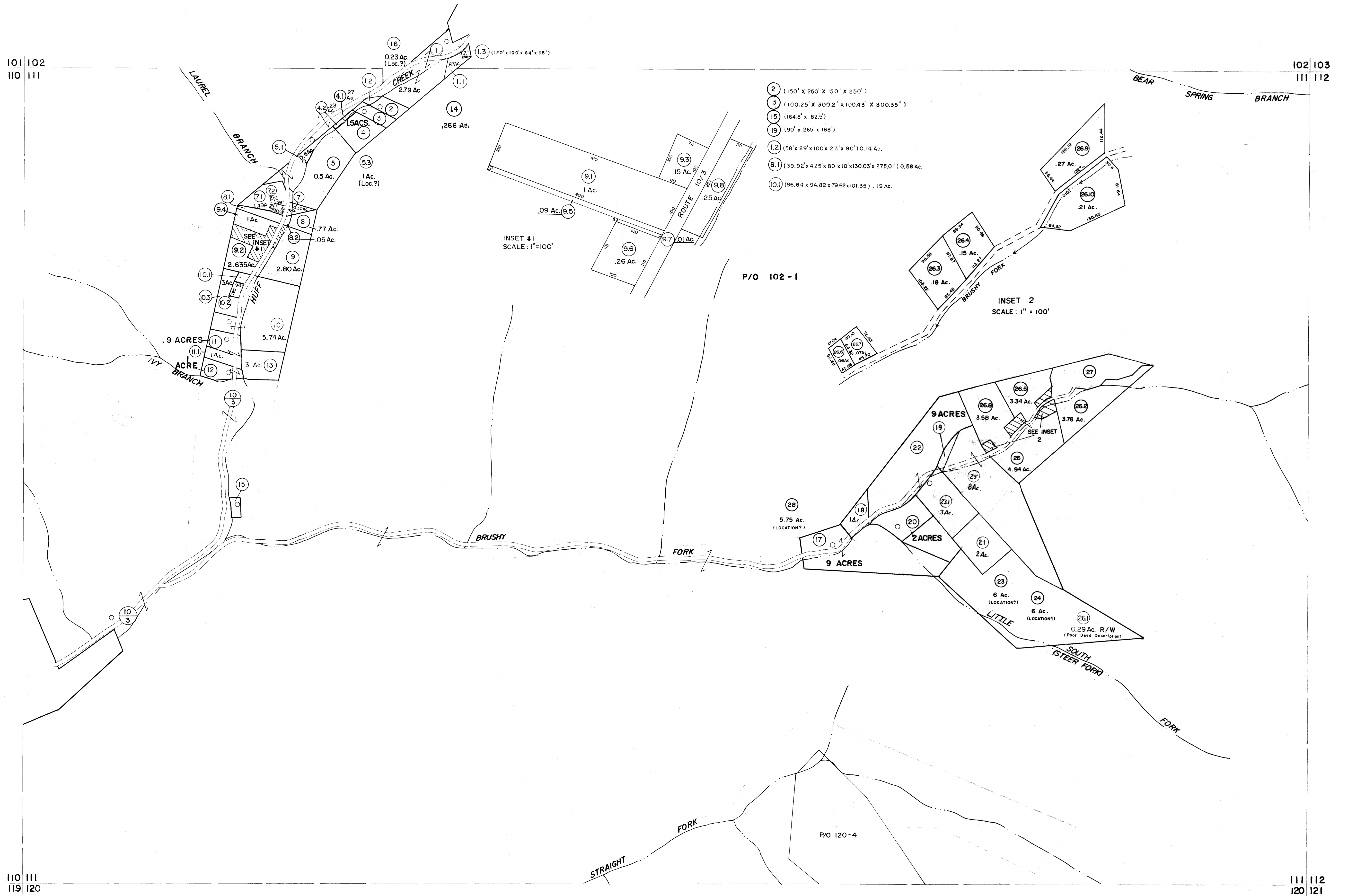


101 102
110 111

102 103
111 112

110 111
119 120

111 112
120 121



- 2 (150' x 250' x 150' x 250')
- 3 (100.25' x 300.2' x 100.43' x 300.35')
- 15 (164.8' x 82.5')
- 19 (90' x 265' x 188')
- 1.2 (58' x 29' x 100' x 23' x 90') 0.14 Ac.
- 8.1 (39.92' x 42.5' x 80' x 10' x 130.03' x 275.01') 0.58 Ac.
- 10.1 (196.64' x 94.82' x 79.62' x 101.35') .19 Ac.

INSET #1
SCALE: 1" = 100'

INSET 2
SCALE: 1" = 100'

P/O 102-1

P/O 120-4

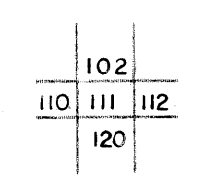
Legend

Property line	—	Original lot line	- - - - -
Edge of pavement or roadway	—	Deed lot number	(15)
Corporation line	—	Parcel or index number	(19)
District line	—	Improvement	o
County line	—	Railroad	—

Revisions

No.	Date	By	For	No.	Date	By	For
1	3-1-64			9	OGIS 10/24/92	DSH	17
2	3-4-75	DAE		10	OGIS 2/27/94	SAJ	18
3	To JULY 1981 C.P.			11	OGIS 9-20-95	J.E.B	19
4	July 83	LM		12	OGIS 12/28/96	SAJ	20
5	To 7-1-84 C.P.			13	SLS INC. 1/5/98	DSW	21
6	July 1985			14	SLS INC. 11/16/98	DSW	22
7	Revised 12/1/87			15	SLS INC. 1/24/00	DSW	23
8	Revised 6/7/88			16			24

KEY MAP



For Tax Purposes Only

Prepared by
MICHAEL BAKER, JR., INC.
 Consulting Engineers
 Rochester, Pennsylvania

WYOMING COUNTY
 STATE OF WEST VIRGINIA
 Office of Assessor

DISTRICT
OCEANA

SHEET NO: III

Date, Aerial Photography: November, 1962 Date, Map: April, 1963
 Photo No: Scale: 1" = 400'