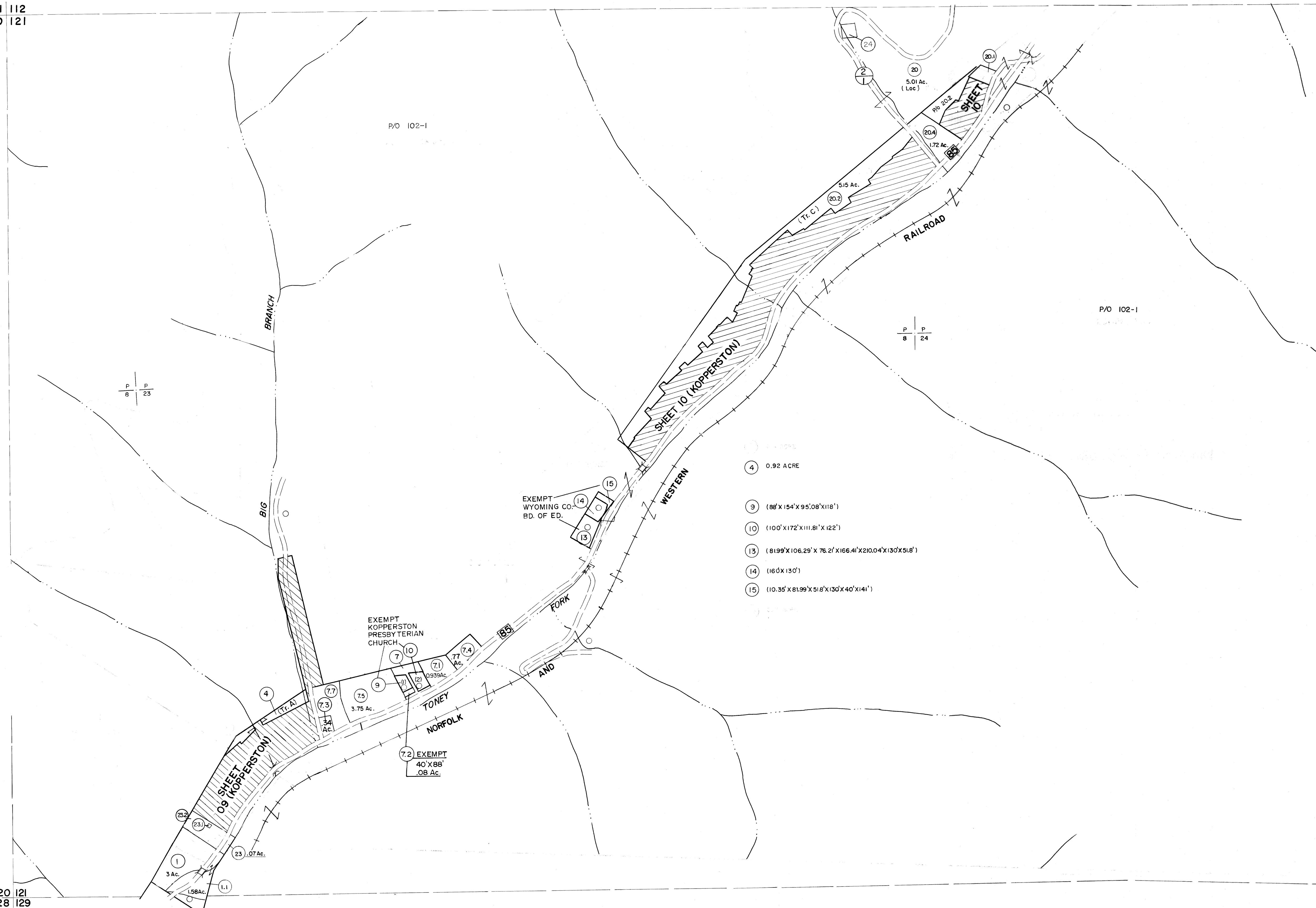


111 112
120 121

112 113
121 122

120 121
128 129

121 122
129 130



For Tax Purposes Only

Prepared by
MICHAEL BAKER, JR., INC.
Consulting Engineers
Rochester, Pennsylvania

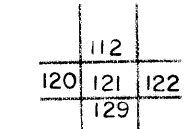
Legend

Property line	---	Original lot line	---
Edge of pavement or roadway	---	Deed lot number	(15)
Corporation line	---	Parcel or index number	o
District line	---	Improvement	o
County line	---	Railroad	---

Revisions

1	3-1-64	9	SLS, INC.	11/16/98	DSW	17
2	TO JULY 1981 C.P.	10	SLS, INC.	1/24/00	DSW	18
3	7/1/84	11	ESI	2/6/02	REK	19
4	Revised to 7-1-84	12	ESI	1/30/03	REK	20
5	Revised to 3-1-88	13				21
6	OGIS 10/25/92	14				22
7	SLS, INC. 1/5/98	15				23
8		16				24

KEY MAP



WYOMING COUNTY
STATE OF WEST VIRGINIA
Office of Assessor

DISTRICT

OCEANA

SHEET NO: 121

Date, Aerial Photography: November, 1962 Date, Map: April, 1963
Photo No: Scale: 1" = 400'