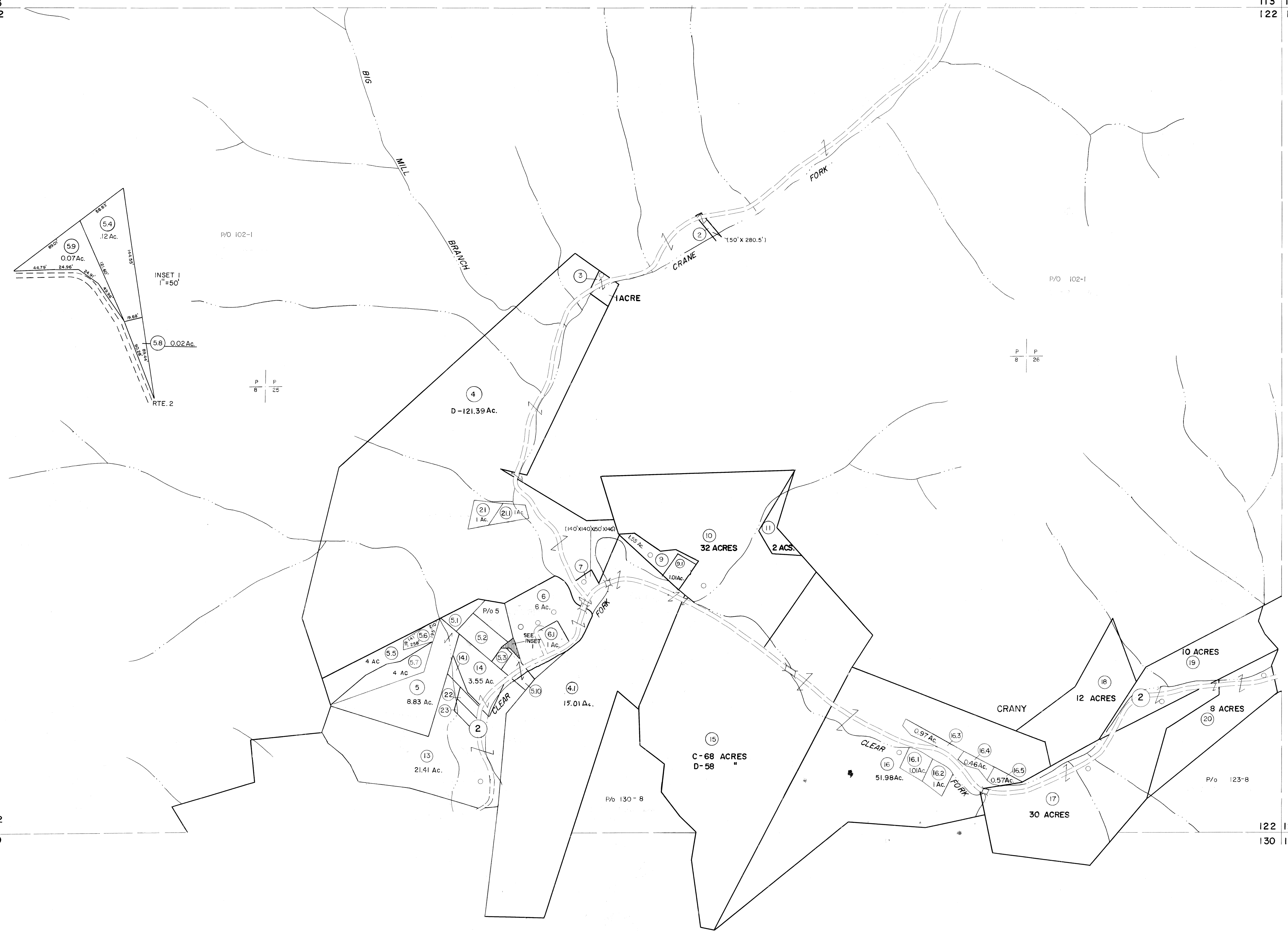


112 113
121 122

113 114
122 123

121 122
129 130

122 123
130 131

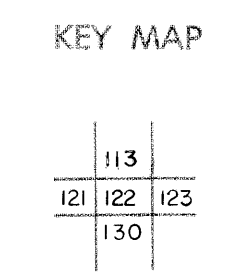


For Tax Purposes Only

Prepared by
MICHAEL BAKER, JR., INC.
Consulting Engineers
Rochester, Pennsylvania

Legend	
Property line	-----
Edge of pavement or roadway	-----
Corporation line	-----
District line	-----
County line	-----
Original lot line	-----
Deed lot number	(15)
Parcel or index number	(99)
Improvement	o
Railroad	+

Revisions						
1	3-1-64	9	SLS INC.	1/5/98	DSW	17
2	3-5-75	10	SLS INC.	11/16/98	DSW	18
3	To JULY 1981 C.P.	11	ESI	2/21/01	REK	19
4	7/1/84	12				20
5	July 1985	13				21
6	Revised to 7-1-87	14				22
7	OGIS 10/25/92	15	DSH			23
8	OGIS 2/28/94	16	SAJ			24



WYOMING COUNTY
STATE OF WEST VIRGINIA
Office of Assessor

DISTRICT
OCEANA
SHEET NO: 122
Date, Aerial Photography: November, 1962 Date, Map: April, 1963
Photo No: Scale: 1" = 400'