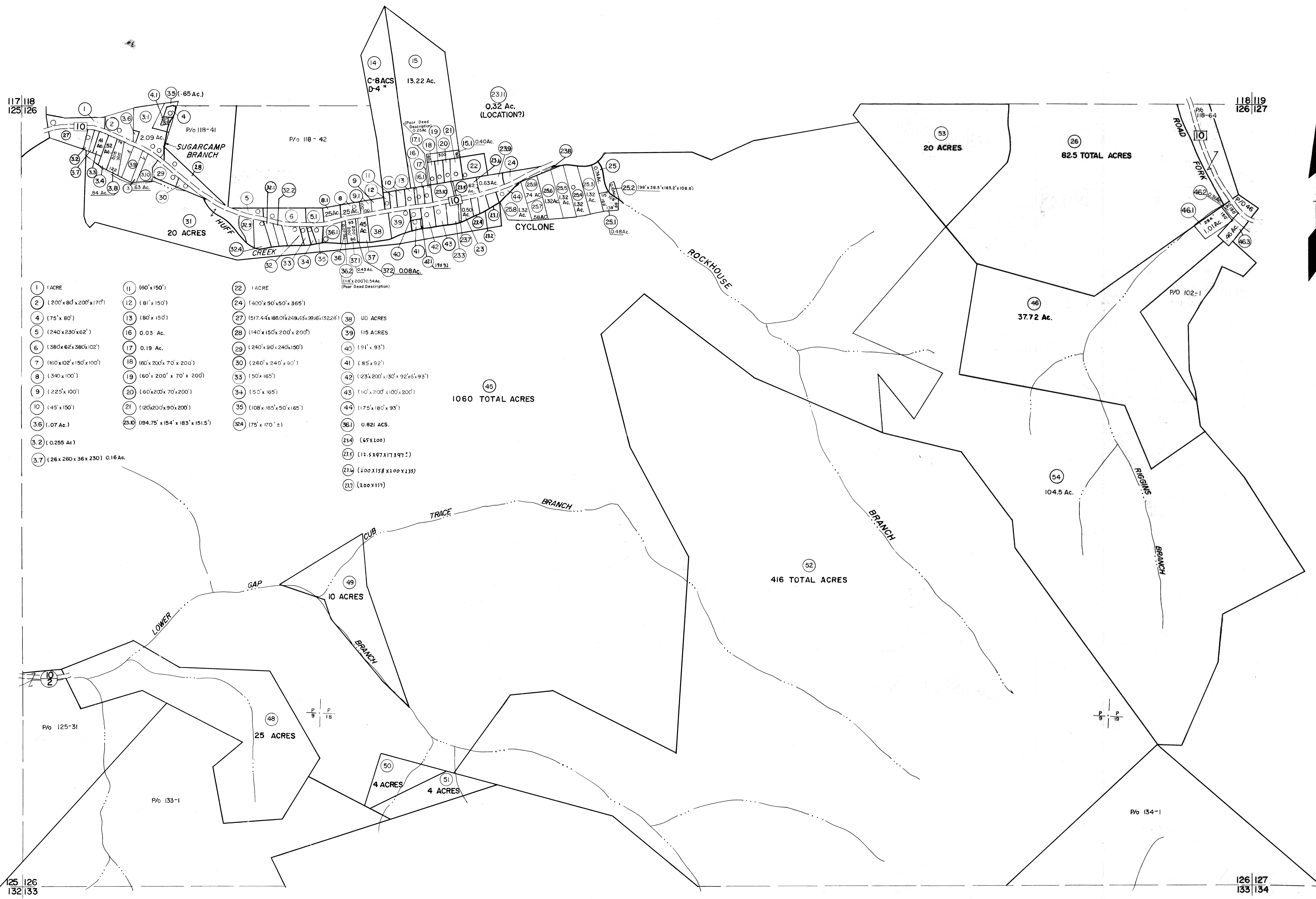


117 118
125 126

118 119
126 127



- | | | |
|------------------------------|----------------------------------|------------------------------------|
| 1 1 ACRE | 11 (60'x150') | 22 1 ACRE |
| 2 (200'x80'x200'x170') | 12 (81'x150') | 24 (400'x50'x50'x365') |
| 4 (75'x80') | 13 (80'x150') | 27 (517.44x880'x249'x3916'x13226') |
| 5 (240'x230'x62') | 16 0.03 Ac. | 28 (140'x150'x200'x200') |
| 6 (380'x62'x380'x102') | 17 0.19 Ac. | 29 (240'x90'x240'x150') |
| 7 (160'x102'x150'x100') | 18 (60'x200'x70'x200') | 30 (260'x240'x90') |
| 8 (340'x100') | 19 (60'x200'x70'x200') | 33 (50'x165') |
| 9 (225'x100') | 20 (60'x200'x70'x200') | 34 (50'x165') |
| 10 (45'x150') | 21 (120'x200'x90'x200') | 35 (108'x165'x50'x165') |
| 13.6 (1.07 Ac.) | 23.10 (194.75'x154'x183'x151.5') | 36.4 (75'x170'±) |
| 3.2 (0.255 Ac.) | | 36.1 0.821 ACS. |
| 3.7 (26x260x36x230) 0.16 Ac. | | 37.4 (45'x100') |
| | | 37.5 (12.5x97'x17'x97') |
| | | 37.6 (200'x158'x100'x133') |
| | | 37.7 (200'x117') |

For Tax Purposes Only
 Prepared by
MICHAEL BAKER, JR., INC.
 Consulting Engineers
 Rochester, Pennsylvania

Legend	
Property line	Original lot line
Edge of pavement or roadway	Dead lot number
Corporation line	Parcel or index number
District line	Improvement
County line	Railroad

Revisions			
1	3-1-64	9	OGIS 10/25/92 DSH 17
2	3-5-75	10	OGIS 9-20-95 J.E.B. 18
3	To JULY 1981 C.P.	11	OGIS 12/27/96 SAJ 19
4	7/1/84	12	SLS INC. 1/5/98 DSW 20
5	1/1/85	13	SLS INC. 11/16/98 DSW 21
6	Revised to 7-1-87	14	ESI 1/30/03 REK 22
7	Revised to 7-1-88	15	
8	OGIS 2/28/94 SAJ 16	16	

KEY MAP

WYOMING COUNTY
 STATE OF WEST VIRGINIA
 Office of Assessor

DISTRICT
OCEANA
 SHEET NO: 126
 Date, Aerial Photography: November, 1962 Date, Map: April, 1963
 Photo No: Scale: 1" = 400'