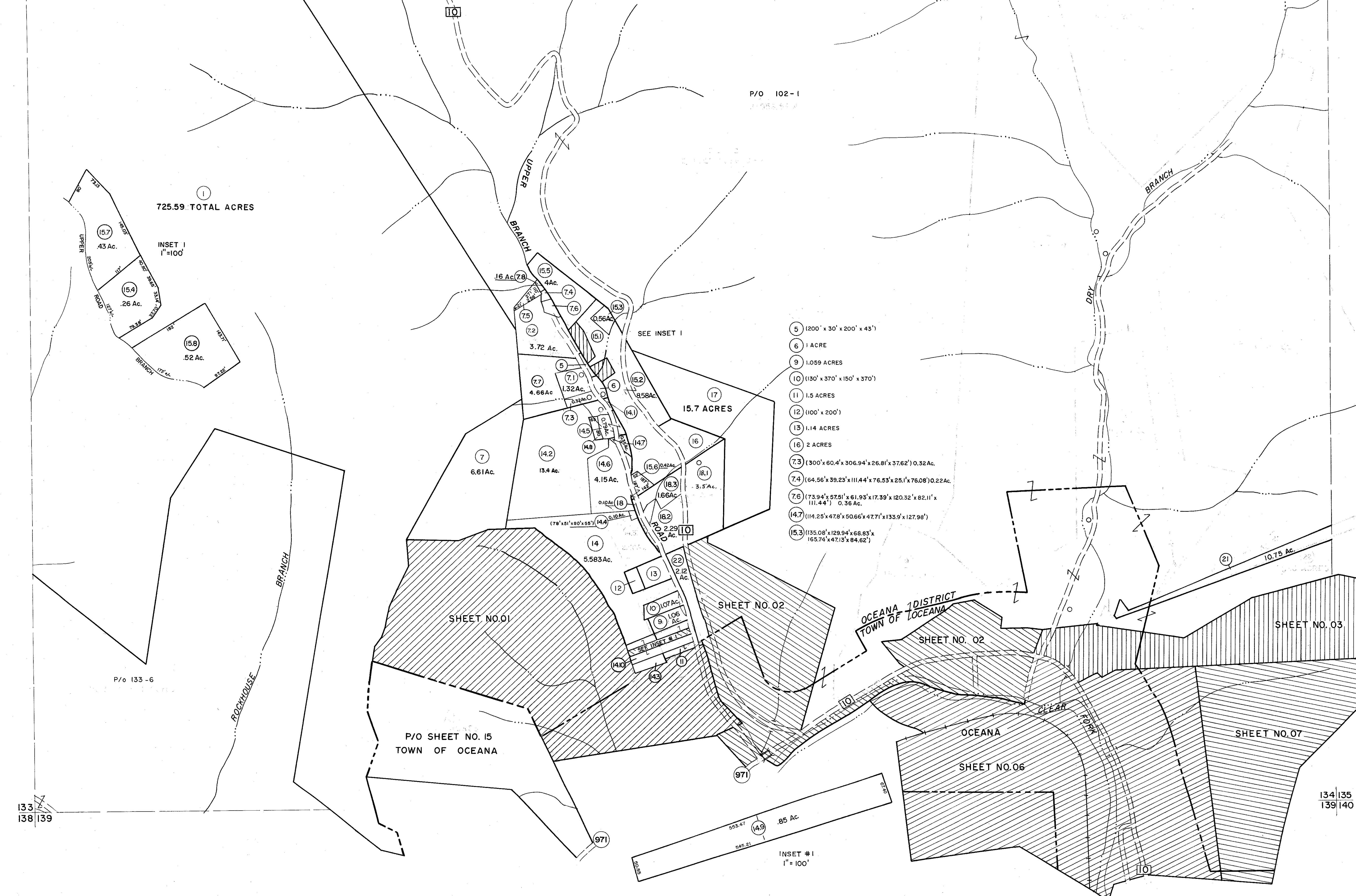


126 127
133 134

127 128
134 135



- 5 (200' x 30' x 200' x 43')
- 6 1 ACRE
- 9 1.059 ACRES
- 10 (130' x 370' x 150' x 370')
- 11 1.5 ACRES
- 12 (100' x 200')
- 13 1.14 ACRES
- 16 2 ACRES
- 7.3 (300' x 60.4' x 306.94' x 26.81' x 37.62') 0.32Ac.
- 7.4 (64.56' x 39.23' x 111.44' x 76.55' x 25.1' x 76.08') 0.22Ac.
- 7.6 (73.94' x 57.51' x 81.93' x 17.39' x 120.32' x 82.11' x 111.44') 0.36 Ac.
- 14.7 (114.25' x 47.8' x 50.66' x 47.71' x 133.9' x 127.98')
- 15.3 (135.08' x 129.94' x 68.85' x 165.74' x 471.3' x 84.62')

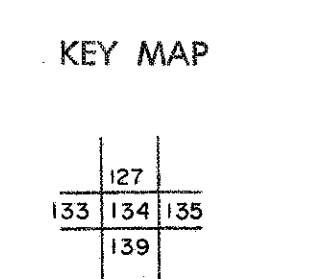
For Tax Purposes Only
 Prepared by
MICHAEL BAKER, JR., INC.
 Consulting Engineers
 Rochester, Pennsylvania

Legend

Property line	Original lot line	(15)
Edge of pavement or roadway	Deed lot number	(10)
Corporation line	Parcel or index number	(9)
District line	Improvement	(8)
County line	Railroad	(7)

Revisions

1	3-1-64	9	OGIS	11/1/92	DSH	17
2	3-12-72	10	OGIS	2/28/94	SAJ	18
3	78 JULY 1981 C.P.	11	O.G.I.S	9-20-95	J.E.B	19
4	70 JULY 1983	12	OGIS	12/16/96	SAJ	20
5	TO JULY 1, 1984 C.P.	13	SLS INC.	1/5/98	DSW	21
6	JULY 1985	14				22
7	REVISION TO 7-1-87	15				23
8	REVISION TO 7-1-88	16				24



WYOMING COUNTY
 STATE OF WEST VIRGINIA
 Office of Assessor

DISTRICT
OCEANA
 SHEET NO: 134
 Date, Aerial Photography: November, 1962 Date, Map: April, 1963
 Photo No: Scale: 1" = 400'