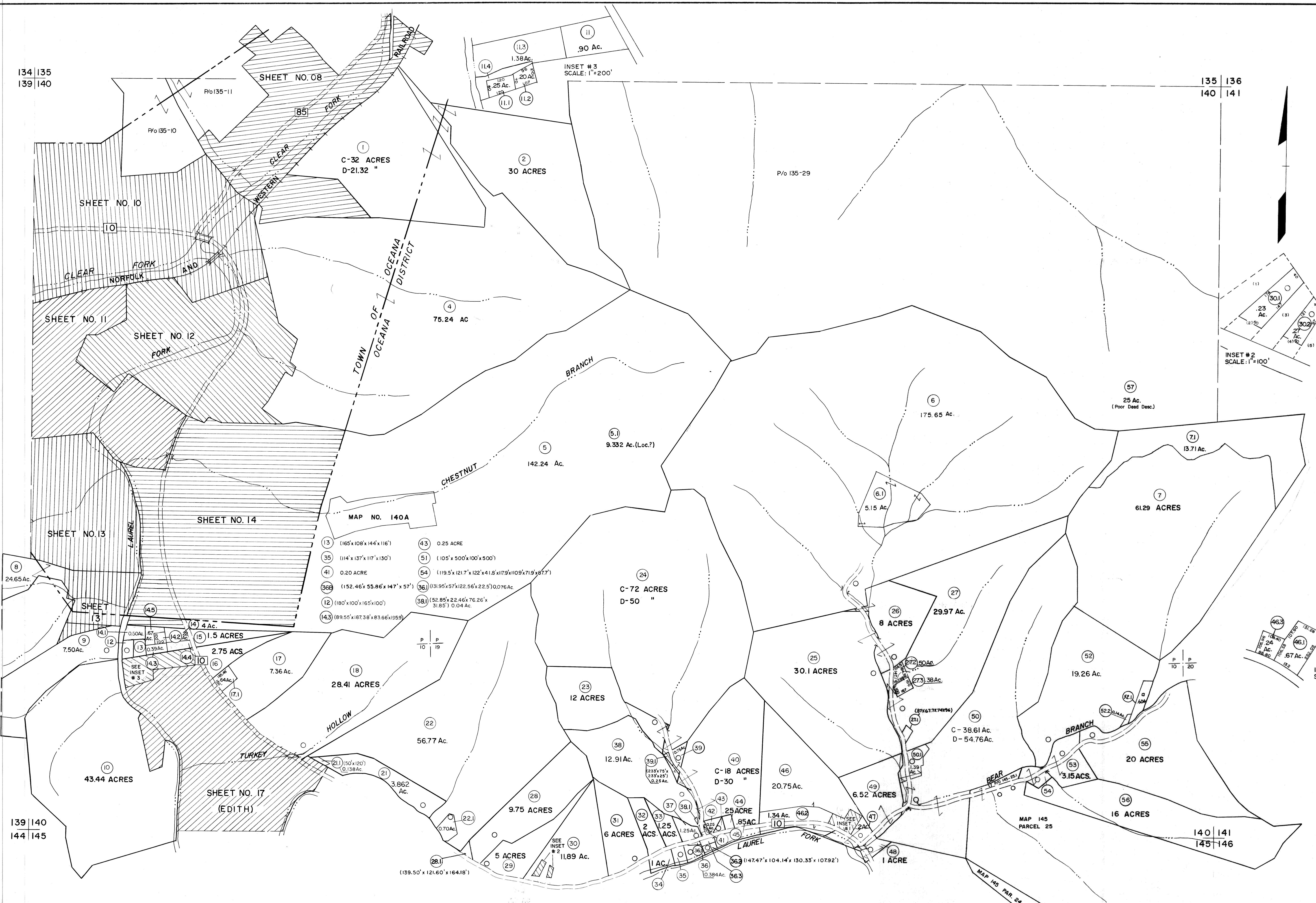


134 | 135
139 | 140

135 | 136
140 | 141



MAP NO. 140 A

| | | | |
|-----|-------------------------------|----|--|
| 13 | (165'x108'x144'x116') | 43 | 0.25 ACRE |
| 35 | (114'x137'x117'x130') | 51 | (105'x500'x100'x500') |
| 41 | 0.20 ACRE | 54 | (119.5'x121.7'x122'x41.8'x179'x109'x71.9'x87.7') |
| 36 | (152.46'x55.86'x147'x57') | 36 | (131.95'x57'x122.56'x22.5') 0.076 Ac. |
| 12 | (180'x100'x165'x100') | 38 | (52.85'x22.46'x76.26'x31.85') 0.04 Ac. |
| 143 | (89.55'x187.38'x83.66'x95.9') | | |

139 | 140
144 | 145

140 | 141
145 | 146

For Tax Purposes Only

Prepared by
MICHAEL BAKER, JR., INC.
Consulting Engineers
Rochester, Pennsylvania

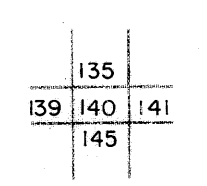
Legend

| | | | |
|-----------------------------|-----|------------------------|------|
| Property line | --- | Original lot line | --- |
| Edge of pavement or roadway | --- | Deed lot number | (15) |
| Corporation line | --- | Parcel or index number | (9) |
| District line | --- | Improvement | --- |
| County line | --- | Railroad | --- |

Revisions

| | | | | | | |
|---|-------------------|-------|--------------|-------------------|-------|----|
| 1 | 3-1-64 | 9 | OGIS 11/1/92 | DSH | 17 | |
| 2 | 3-6-75 | DAE | 10 | OGIS 2/28/94 | SAJ | 18 |
| 3 | To JULY 1981 C.P. | | 11 | O.G.I.S 9-20-95 | J.E.B | 19 |
| 4 | To July 1983 | L.M. | 12 | OGIS 12/16/96 | SAJ | 20 |
| 5 | 7/1/84 | R.H.S | 13 | SLS INC. 11/16/99 | DSW | 21 |
| 6 | July 1985 | | 14 | ESI 2/21/01 | REK | 22 |
| 7 | Revised 7-1-87 | | 15 | ESI 1/30/03 | REK | 23 |
| 8 | Revised 7-1-88 | | 16 | | | 24 |

KEY MAP



WYOMING COUNTY
STATE OF WEST VIRGINIA
Office of Assessor

DISTRICT
OCEANA

SHEET NO: 140

Date, Aerial Photography: November, 1962 Date, Map: April, 1963
Photo No. Scale: 1" = 400'