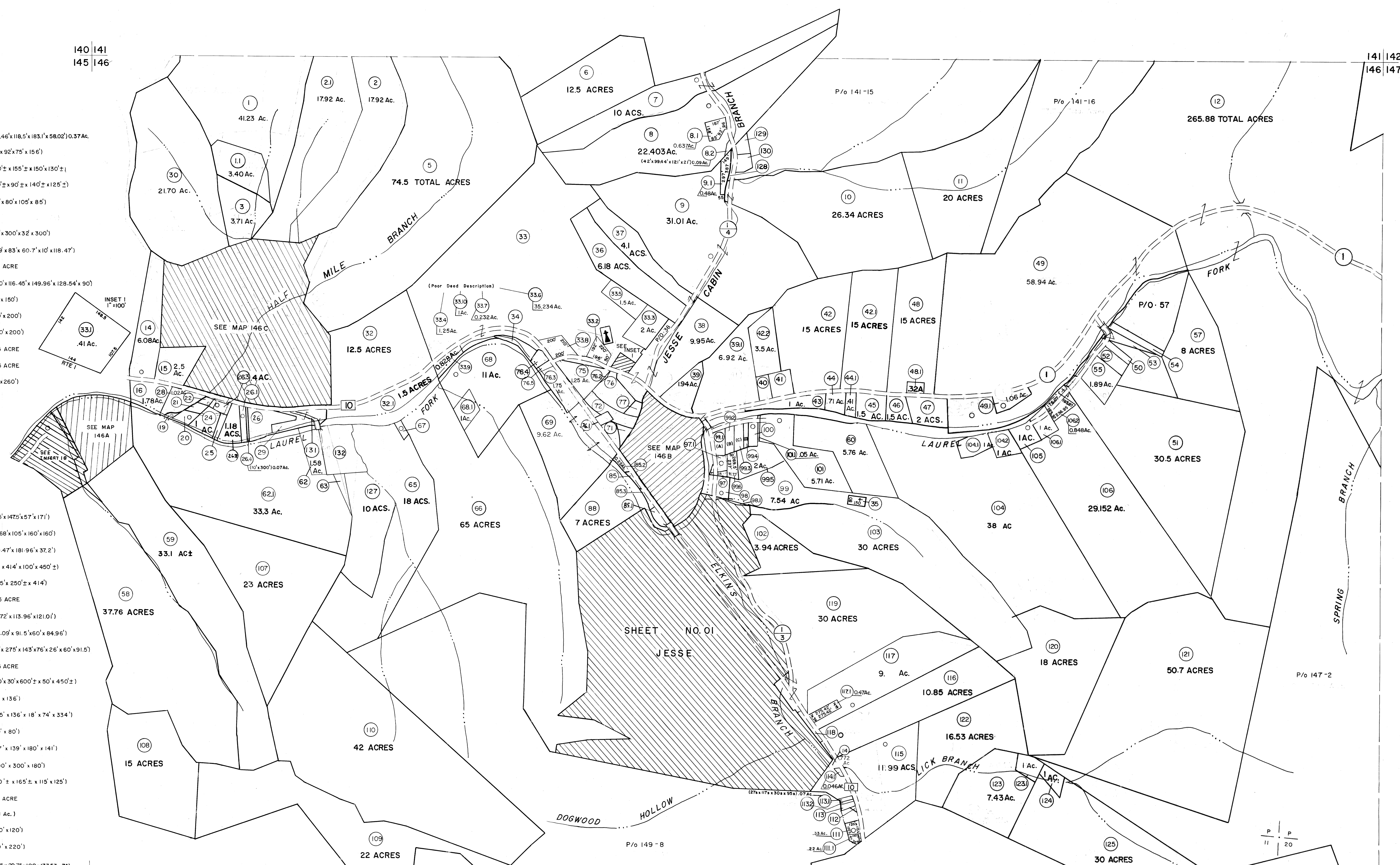


- 17 (118.46'x118.5'x183.1'x58.02') 0.37Ac.
- 19 (71'x92'x75'x156')
- 20 (150'±x155'±x150'x130'±)
- 21 (120'±x90'±x140'±x125'±)
- 22 (70'x80'x105'x85')
- 25 (63'x300'x32'x300')
- 27 (64.9'x83'x60.7'x10'x118.47')
- 29 0.5 ACRE
- 34 (420'x116.45'x149.96'x128.54'x90')
- 35 (80'x150')
- 40 800'x200'
- 41 (200'x200')
- 53 0.5 ACRE
- 54 0.5 ACRE
- 64 (55'x260')

- 67 (51.5'x147.5'x57'x171')
- 71 (39.68'x105'x160'x160')
- 73 (169.47'x181.96'x37.2')
- 74 (70'x414'x100'x450'±)
- 75 (245'x250'±x414')
- 77 0.25 ACRE
- 78 (46.72'x113.96'x121.0')
- 79 (60.09'x91.5'x60'x84.96')
- 80 (80'x275'x143'x76'x26'x60'x91.5')
- 81 0.5 ACRE
- 82 (100'x30'x600'±x50'x450'±)
- 86 (18'x136')
- 87 (295'x136'x18'x74'x334')
- 89 (30'x80')
- 91 (167'x139'x180'x141')
- 92 (300'x300'x180')
- 95 (210'±x165'±x115'x125')
- 96 0.5 ACRE
- 97 (.31 Ac.)
- 98 (190'x120')
- 100 (80'x220')

- 971 (142.5'x29.75'x100'x173.53'x74')
- 112 (56'x72'x45')
- 113 (41.1'x140.89'x48.46'x117.5') 0.14Ac.
- 114 0.772 Ac.
- 118 (315'x50'x315'x55')
- 128 (84.53'x25'x80'x33'x8'x196'x21') .085 Ac.
- 129 (119.19'x155.85'x14.62'x112.2'x95.5') 0.32Ac.
- 130 (112.2'x127.9'x85.15'x70.84'x14'x62.46'x66.65') 0.41Ac.
- 131 (81.15'x21.07'x71.06'x32')
- 941 42x194 x99x186
- 50 (56.42'x284.67'x58.35'x291.14') 0.38Ac.
- 52 (110.8'x291.14'x14.48'x303.5') 0.76Ac.
- 762 (56.24'x75.33'x120.5') 0.02 Ac.
- 65 (164'x50'x150'x50'S) 0.25Ac.
- 95.1 .126 Ac.
- 26.3 .75 Ac.
- 85.2 (133'x187'x50'Sx155'S) 0.25 Ac.
- 85.3 (201'x100'x140'Sx50'S) 0.25 Ac.
- 113.2 (20'x117.5') .05 Ac.



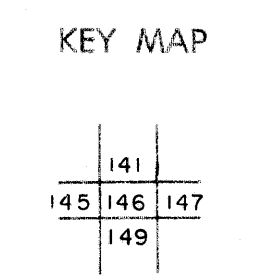
For Tax Purposes Only
 Prepared by
MICHAEL BAKER, JR., INC.
 Consulting Engineers
 Rochester, Pennsylvania

Legend

| | |
|-----------------------------|------------------------|
| Property line | Original lot line |
| Edge of pavement or roadway | Deed lot number |
| Corporation line | Parcel or index number |
| District line | Improvement |
| County line | Railroad |

Revisions

| | | | | | |
|---|--------------|----|------------------|-------|----|
| 1 | 3-1-G4 | 9 | OGIS 11/1/92 | DSH | 17 |
| 2 | 3-7-75 | 10 | OGIS 2/28/94 | SAJ | 18 |
| 3 | To July 1981 | 11 | O.G.I.S 9-20-95 | J.E.B | 19 |
| 4 | To July 1985 | 12 | OGIS 1/1/97 | SAJ | 20 |
| 5 | 7/1/84 | 13 | SLS INC. 1/5/98 | DSW | 21 |
| 6 | 7/1/85 | 14 | SLS INC. 1/24/00 | DSW | 22 |
| 7 | 7/1/87 | 15 | ESI 1/30/03 | REK | 23 |
| 8 | 7/1/88 | 16 | | | 24 |



WYOMING COUNTY
 STATE OF WEST VIRGINIA
 Office of Assessor

DISTRICT
OCEANA
 SHEET NO: 146
 Date, Aerial Photography: November, 1962 Date, Map: April, 1963
 Photo No: Scale: 1" = 400'