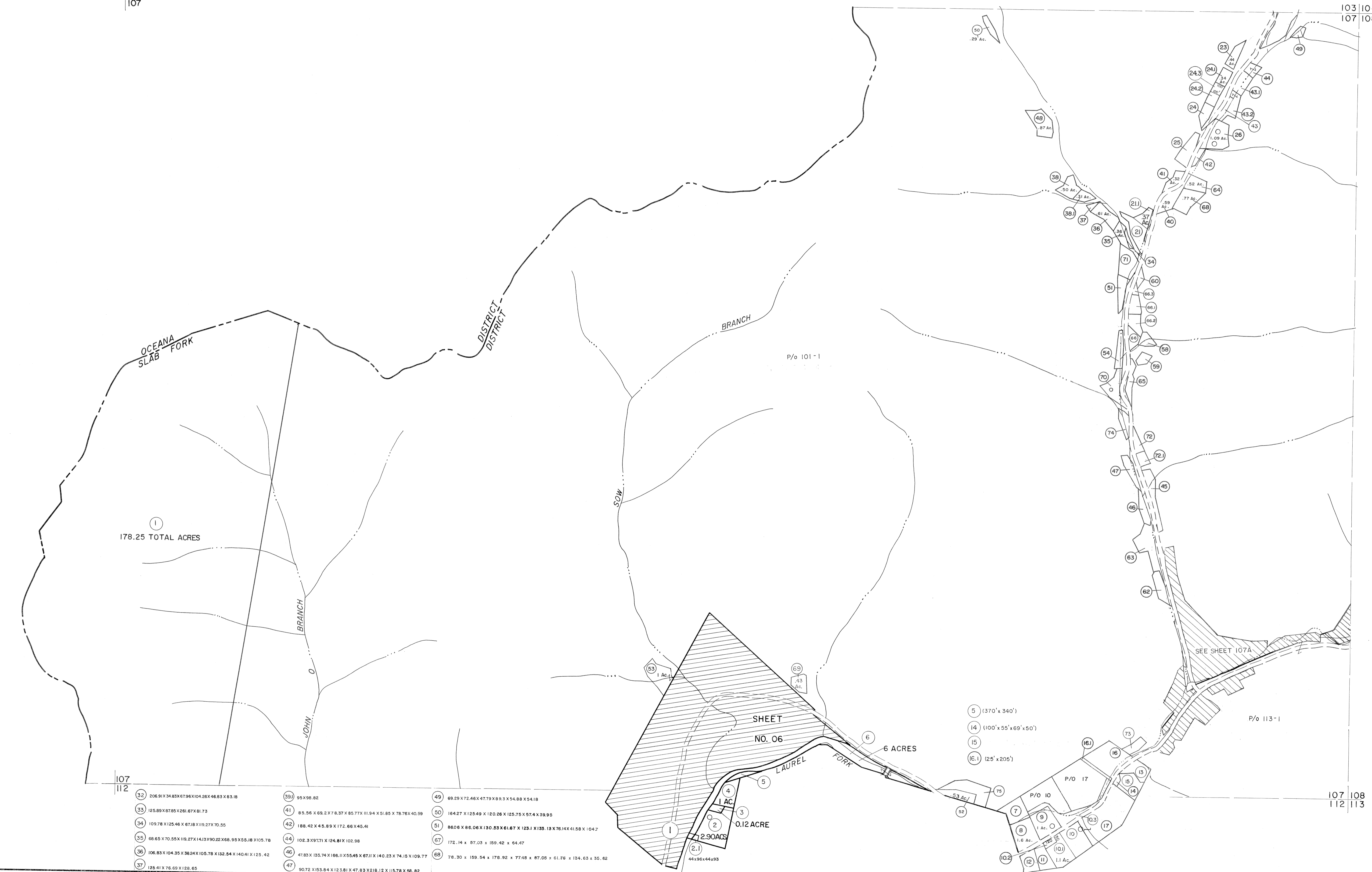


103
107

103 104
107 108



178.25 TOTAL ACRES

SHEET NO. 06
6 ACRES

32	206.91 X 34.83 X 67.96 X 104.28 X 46.83 X 83.18	39	95 X 98.82	49	69.25 X 72.46 X 47.79 X 89.3 X 54.88 X 54.18
33	125.89 X 87.85 X 261.67 X 81.73	41	85.56 X 69.2 X 7.8.37 X 85.77 X 111.94 X 51.85 X 78.76 X 40.09	50	164.27 X 125.49 X 120.26 X 125.75 X 57.4 X 39.95
34	109.78 X 125.46 X 67.18 X 119.27 X 70.55	42	188.42 X 48.89 X 172.66 X 45.41	51	86.06 X 86.06 X 130.55 X 61.67 X 123.1 X 135.13 X 76.14 X 41.58 X 104.7
35	68.65 X 70.55 X 119.27 X 141.3 X 90.22 X 68.95 X 55.18 X 105.78	44	102.3 X 97.71 X 124.81 X 102.98	57	172.14 X 57.03 X 159.42 X 64.47
36	106.83 X 104.35 X 36.24 X 105.78 X 132.54 X 140.41 X 125.42	46	47.83 X 135.74 X 166.11 X 55.45 X 87.11 X 140.23 X 74.15 X 109.77	58	78.30 X 159.54 X 178.92 X 77.48 X 87.05 X 124.63 X 65.62
37	125.41 X 78.60 X 128.65	47	90.72 X 153.84 X 123.81 X 47.83 X 218.12 X 115.78 X 58.82		

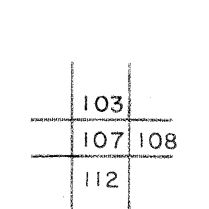
Legend

Property line	—	Original lot line	—
Edge of pavement or roadway	—	Deed lot number	(15)
Corporation line	—	Parcel or index number	(2)
District line	—	Improvement	o
County line	—	Railroad	—

Revisions

1	3-1-64	9	OGIS 11-5-92	RO	17
2	RHODES MAR 75 PAM	10	OGIS 2/20/94	DSH	18
3	Revised to 7-1-85	11	O.G.I.S 9-20-95	J.E.B	19
4	July 83	12	OGIS 12/23/96	SAJ	20
5	REV. TO 7-1-84	13	SLS INC. 1/5/98	DSW	21
6	Revised to 7-1-85	14	ESI 2/15/01	REK	22
7	Revised to 7-1-85	15	ESI 1/31/02	REK	23
8	Revised to 7-1-88	16			24

KEY MAP



For Tax Purposes Only
 Prepared by
MICHAEL BAKER, JR., INC.
 Consulting Engineers
 Rochester, Pennsylvania

WYOMING COUNTY
 STATE OF WEST VIRGINIA
 Office of Assessor

DISTRICT
SLAB FORK
 SHEET NO: 107
 Date, Aerial Photography: November, 1962 Date, Map: April, 1963
 Photo No: Scale: 1" = 400'