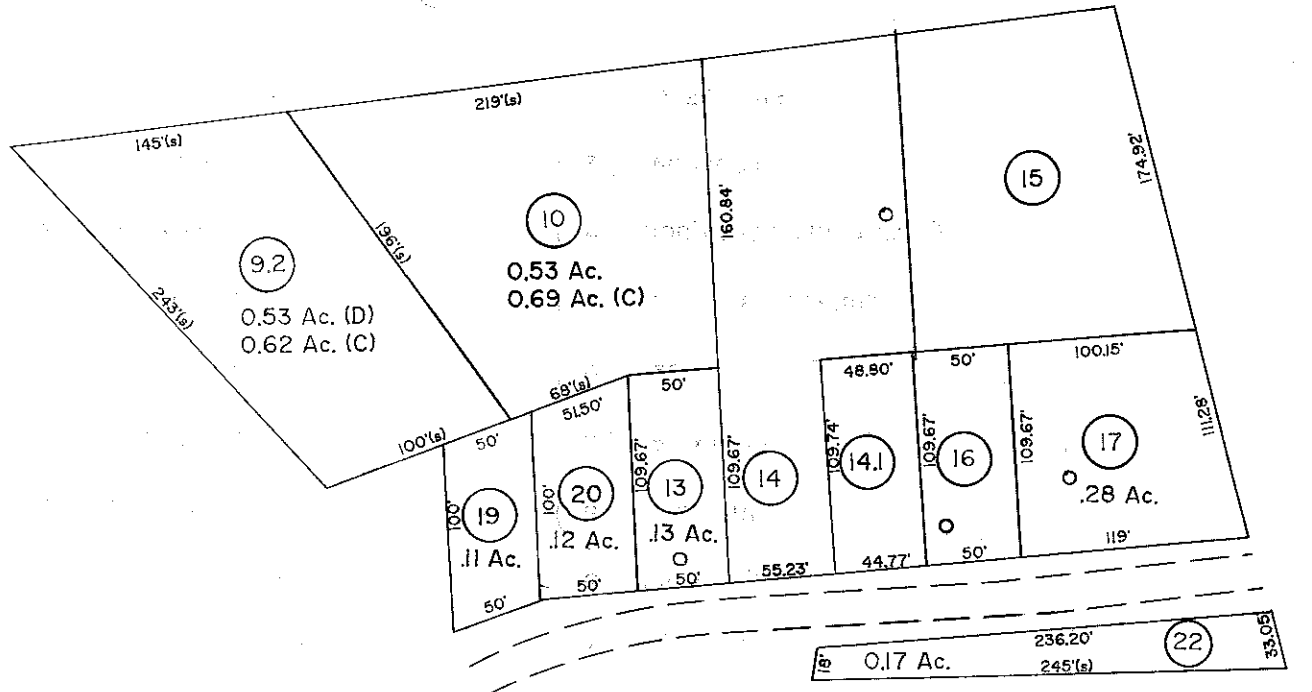
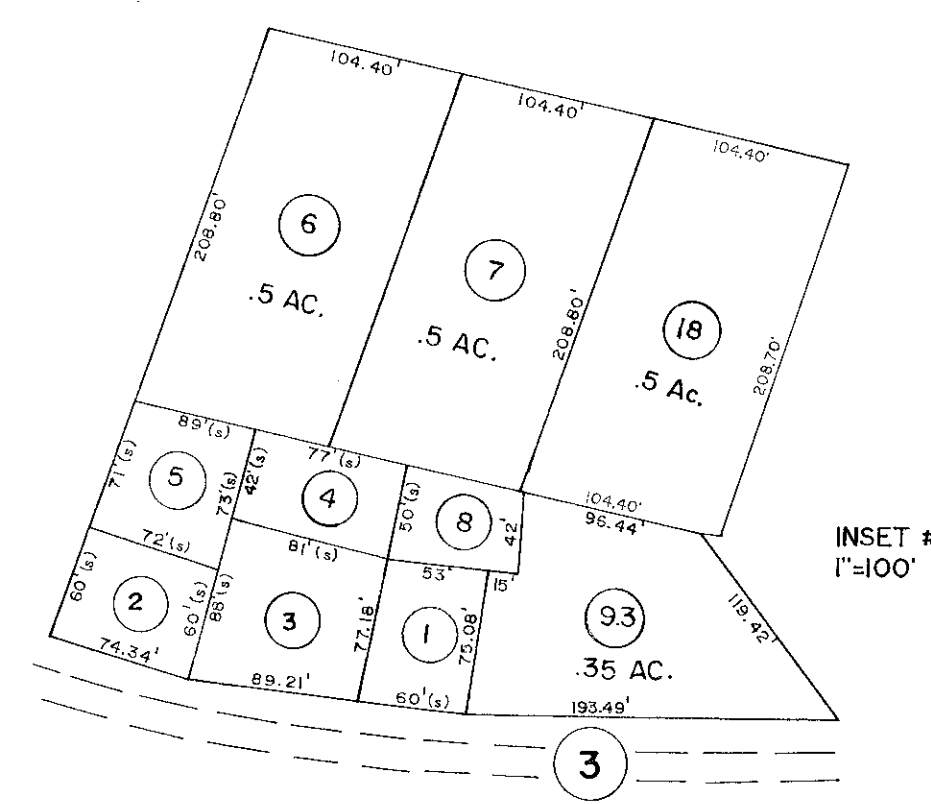


105 106  
109 110

106  
110 111

109 110  
114 115

110 111  
115 116

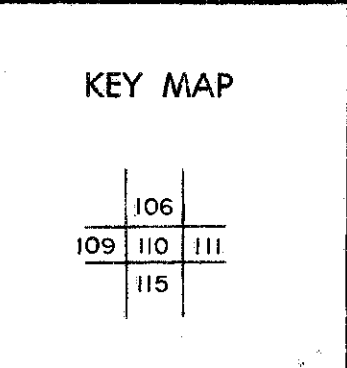


- 24 80.1 X 132.07 X 88.61 X 126.35
- 25 155.1 X 88.62 X 155.55 X 101.72
- 26 126.06 X 25.18 X 84.87 X 73.71 X 71.56
- 28 56.7 X 127.19 X 80.75 X 91.3 X 57.53 X 127.22 X 125.46 X 109.41
- 30 106.58 X 41.59 X 39.4 X 127.71 X 36.84

For Tax Purposes Only  
 Prepared by  
**MICHAEL BAKER, JR., INC.**  
 Consulting Engineers  
 Rochester, Pennsylvania

Legend	
Property line	Original lot line
Edge of pavement or roadway	Deed lot number
Corporation line	Parcel or index number
District line	Improvement
County line	Railroad

Revisions			
1	3-1-64	9	SLS INC. 1/5/98 DSW
2	MAR 75 PAM	10	SLS INC. 11/11/98 DSW
3	Revised to 7-1-81 C.P.	11	SLS INC. 01/19/00 JWM
4	To 7-1-85 C.P.	12	
5	Revised to 7-1-87 C.P.	13	
6	OGIS 11-5-92 RO	14	
7	OGIS 2/20/94 DSH	15	
8	O.G.I.S 9-20-95 J.E.B	16	



**WYOMING COUNTY**  
 STATE OF WEST VIRGINIA  
 Office of Assessor

DISTRICT	<b>SLAB FORK</b>
SHEET NO: 110	
Date, Aerial Photography: November, 1962 Date, Map: April, 1963	
Date, Photo No:	Scale: 1" = 400'