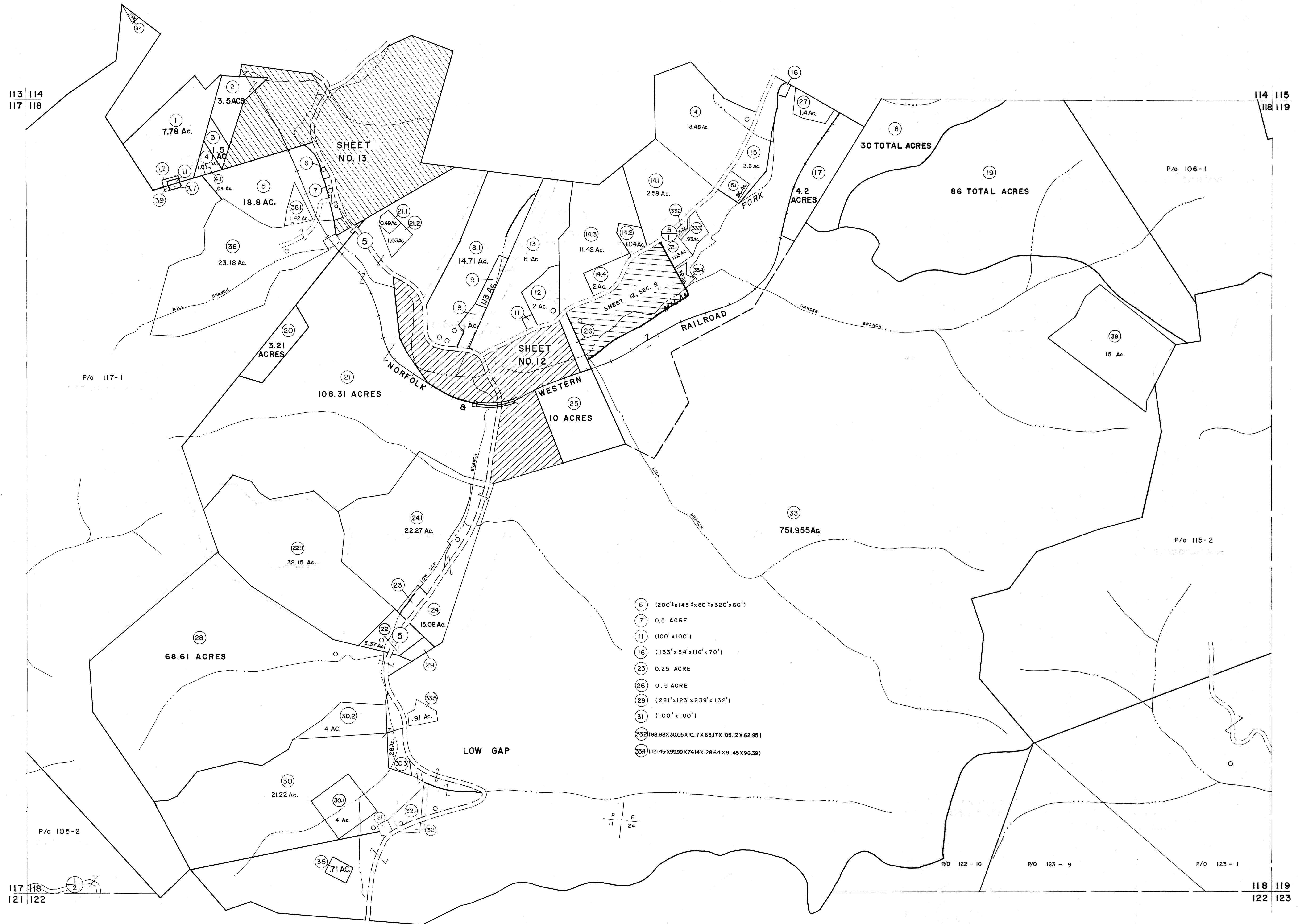


113 114
117 118

114 115
118 119

117 118
121 122

118 119
122 123



For Tax Purposes Only
 Prepared by
MICHAEL BAKER, JR., INC.
 Consulting Engineers
 Rochester, Pennsylvania

Legend

Property line	—	Original lot line	---
Edge of pavement or roadway	—	Deed lot number	(15)
Corporation line	---	Parcel or index number	(99)
District line	---	Improvement	o
County line	---	Railroad	—+—

Revisions

1	3-1-64	9	OGIS 11-5-92	RO	17	ESI 1/28/03	REK
2	MAR 75	10	O.G.I.S 9-20-95	J.E.B	18		
3	Revised to 7-1-81	11	OGIS 12/29/96	SAJ	19		
4	REV. TO 7-1-84	12	SLS INC. 1/5/98	DSW	20		
5	To July 1, 1985 C.P.	13	SLS INC. 11/11/98	DSW	21		
6	Revised to 7-1-87	14	SLS INC. 01/19/00	JWM	22		
7	Revised to 7-1-87	15	ESI 2/15/01	REK	23		
8	Revised to 7-1-88	16			24		

KEY MAP

114	118
117	119
122	123

WYOMING COUNTY
 STATE OF WEST VIRGINIA
 Office of Assessor

DISTRICT
SLAB FORK
SHEET NO: 118
 Date, Aerial Photography: November, 1962 Date, Map: April, 1963
 Photo No: Scale: 1" = 400'