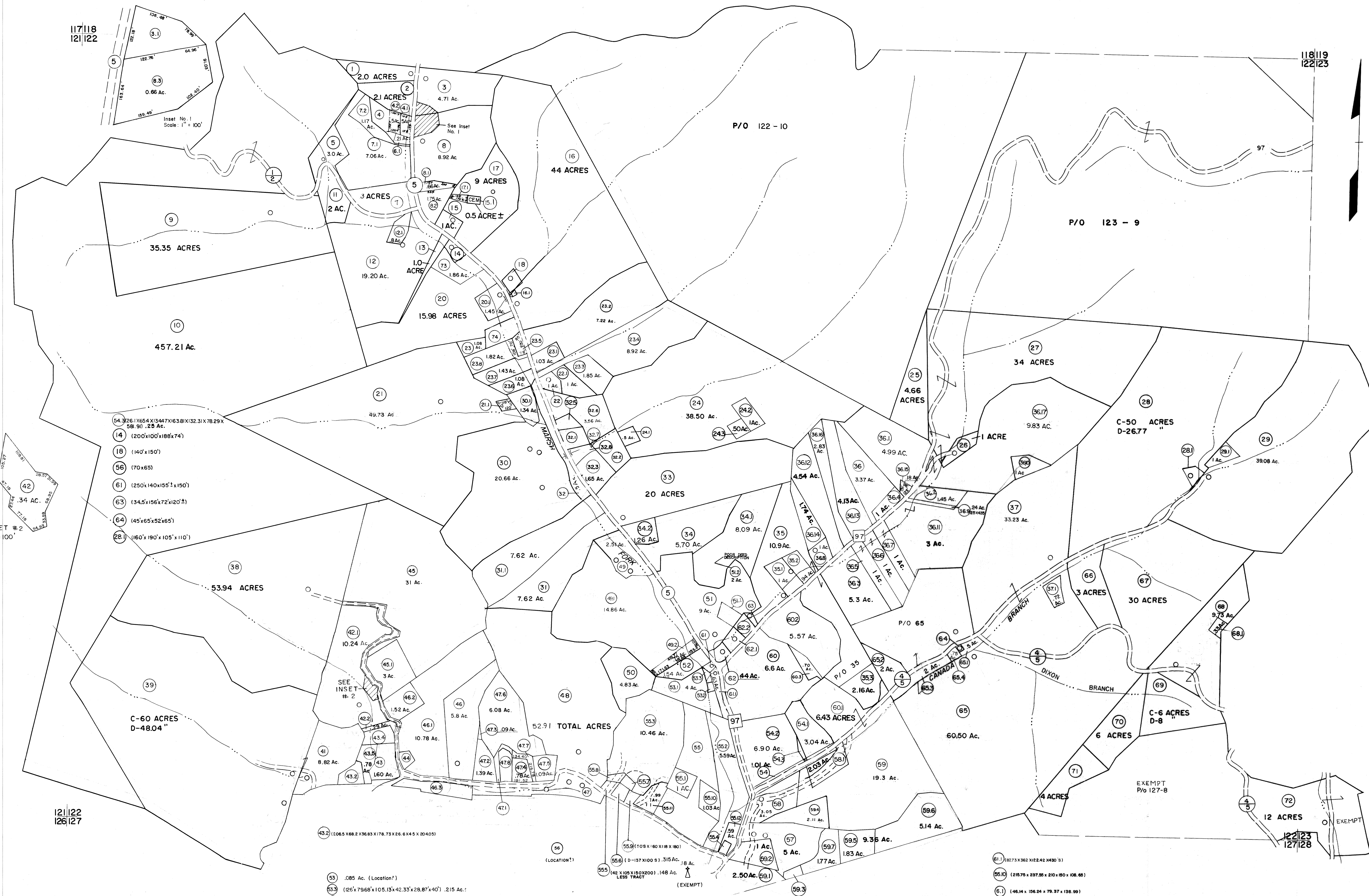


117|118
121|122

118|119
122|123



- 54 (261x654x13447x16381x132.31x78.29x581.91) .25 Ac.
- 14 (200x100x188x74)
- 18 (140x150)
- 36 (70x65)
- 61 (250x140x155x150)
- 63 (34.5x156x72x120x2)
- 64 (45x65x52x65)
- 28.1 (160x190x105x110)

INSET # 2
1" = 100'

121|122
126|127

122|123
127|128

For Tax Purposes Only

Prepared by
MICHAEL BAKER, JR., INC.
Consulting Engineers
Rochester, Pennsylvania

Legend

Property line	Original lot line	(15)
Edge of pavement or roadway	Deed lot number	(19)
Corporation line	Parcel or index number	(19)
District line	Improvement	(19)
County line	Railroad	(19)

Revisions

1	3-1-64	9	OGIS 11-5-92	RO	17	ES1	2/1/02	REK
2	MAR 75 PAM	10	OGIS 2/20/94	DSH	18	ES1	1/28/03	REK
3	Revised to 7-1-81	11	O.G.I.S 9-20-95	J.E.B	19			
4	July 83	12	OGIS 12/26/96	SAJ	20			
5	REV TO 7-1-84	13	SLS INC. 11/12/98	DSW	21			
6	To 7-1-85 C.P.	14	SLS INC. 1/20/00	DSW	22			
7	Revised to 7-1-87	15	ES1 2/20/01	REK	23			
8	Revised to 7-1-88	16			24			

KEY MAP
118
121|122|123
127

WYOMING COUNTY
STATE OF WEST VIRGINIA
Office of Assessor

DISTRICT
SLAB FORK
SHEET NO: 122
Date, Aerial Photography: November, 1962 Date, Map: April, 1963
Photo No: Scale: 1" = 400'