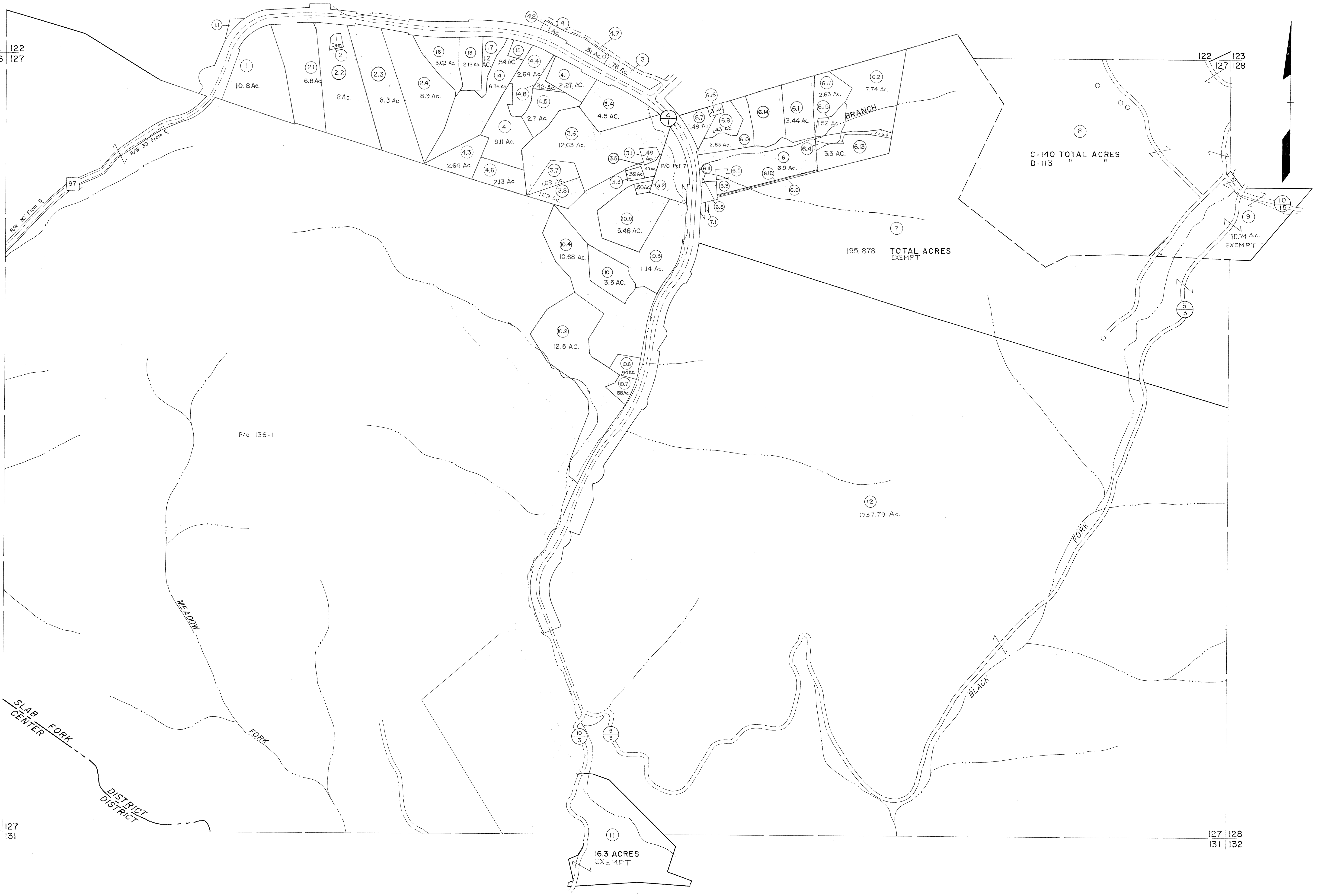


121 122
126 127

122 123
127 128

126 127
131

127 128
131 132



For Tax Purposes Only

Prepared by
MICHAEL BAKER, JR., INC.
Consulting Engineers
Rochester, Pennsylvania

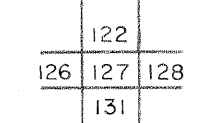
Legend

Property line	—————	Original lot line	-----
Edge of pavement or roadway	-----	Dead lot number	(15)
Corporation line	-----	Parcel or index number	(97)
District line	-----	Improvement	o
County line	-----	Railroad	—+—

Revisions

1	3-1-64	9	OGIS	2/20/94	DSH	17
2	MAR 75 PAM	10	O.G.I.S	9-20-95	J.E.B	18
3	Revised to 7-1-81	11	OGIS	12/26/96	SAJ	19
4	REV. TO 7-1-84	12	SLS INC.	1/5/98	DSW	20
5	To July 1, 1985 C.P.	13	SLS INC.	11/12/98	DSW	21
6	Revised to 7-1-87	14	SLS INC.	1/20/00	DSW	22
7	Revised to 7-1-88	15	ESL	2/1/02	REK	23
8	OGIS 11-5-92	16	RO			24

KEY MAP



WYOMING COUNTY

STATE OF WEST VIRGINIA

Office of Assessor

DISTRICT

SLAB FORK

SHEET NO: 127

Date, Aerial Photography: November, 1962 Date, Map: April, 1963
Photo No: Scale: 1" = 400'