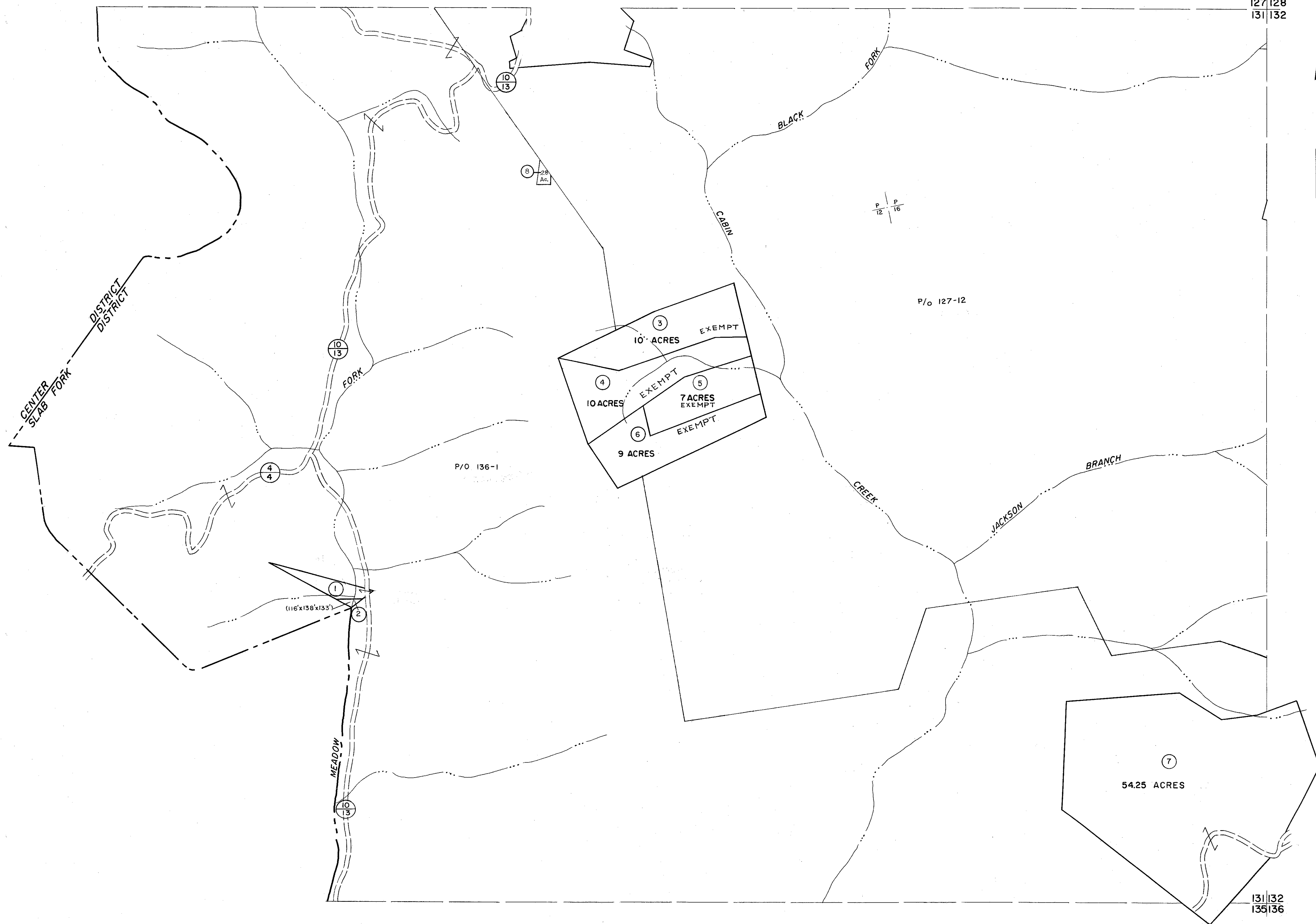


126|127
131

127|128
131|132



131
135

131|132
135|136

For Tax Purposes Only

Prepared by
MICHAEL BAKER, JR., INC.
Consulting Engineers
Rochester, Pennsylvania

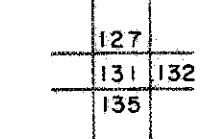
Legend

Property line	Original lot line	(15)
Edge of pavement or roadway	Deed lot number	(27)
Corporation line	Parcel or index number	o
District line	Improvement	
County line	Railroad	

Revisions

1	D-1-64	9	17
2	MAR 75 PAM	10	18
3	Revised 7-1-81 DSW	11	19
4	Revised 7-1-87 DSW	12	20
5	Revised 10-7-88 DSW	13	21
6	SLS INC. 1/5/98 DSW	14	22
7		15	23
8		16	24

KEY MAP



WYOMING COUNTY
STATE OF WEST VIRGINIA
Office of Assessor

DISTRICT
SLAB FORK

SHEET NO: 131

Date, Aerial Photography: November, 1962 Date, Map: April, 1963
Photo No: Scale: 1" = 400'