

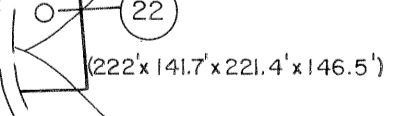
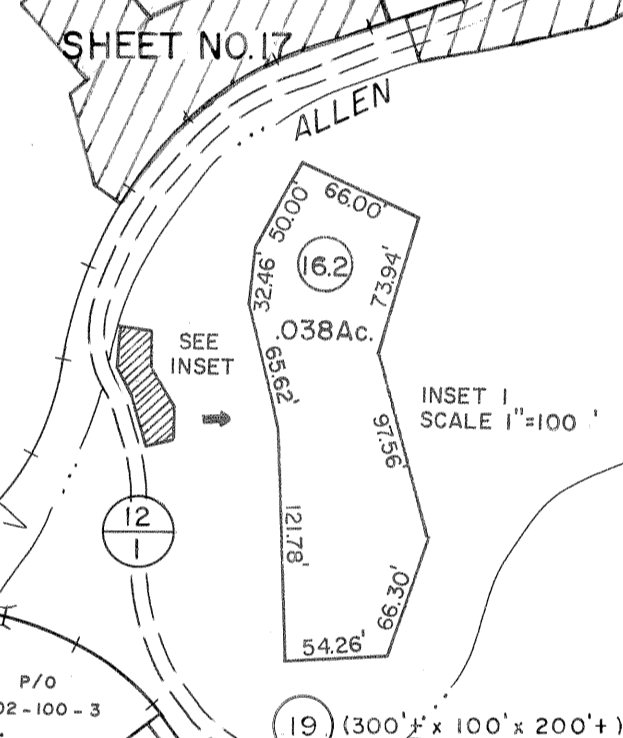
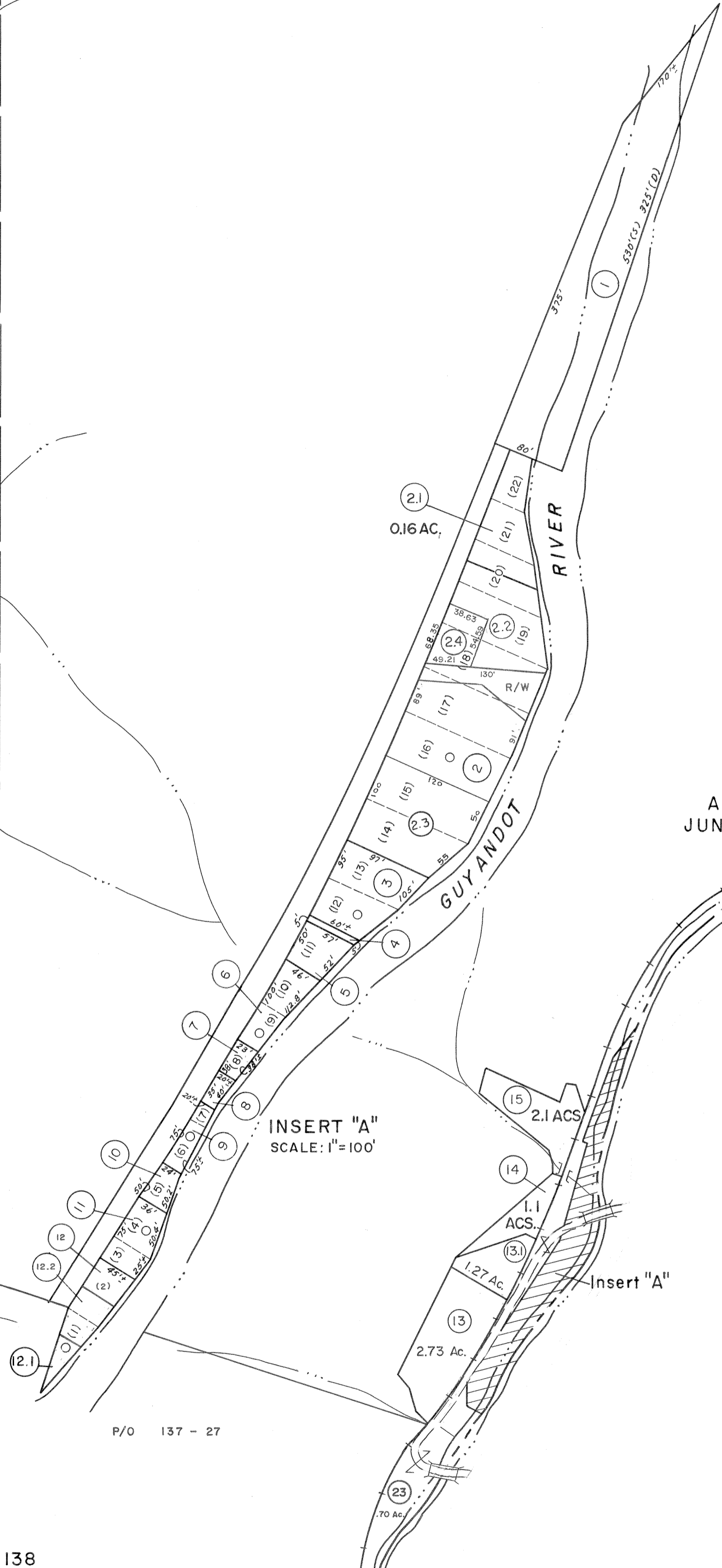
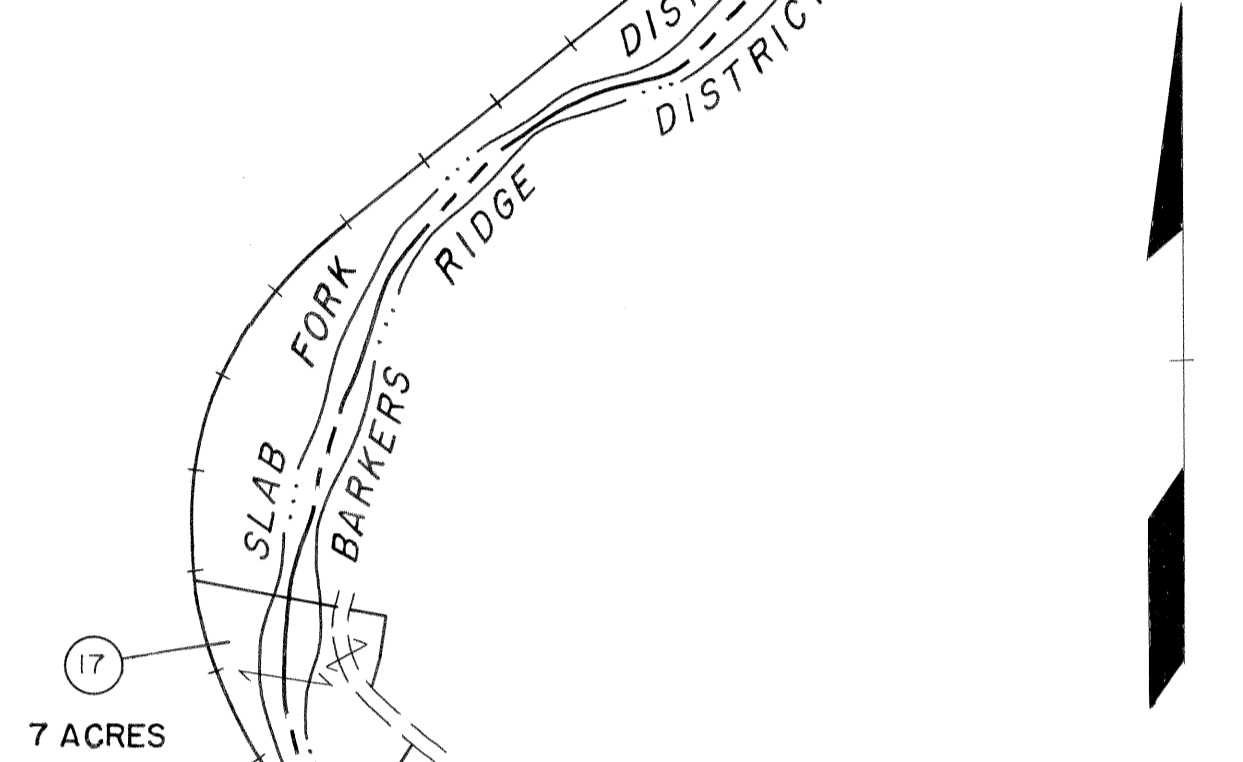
133 134
137 138

134
138

RALEIGH COUNTY, WEST VA.
WYOMING COUNTY, WEST VA.

137 138
141 142

138
142



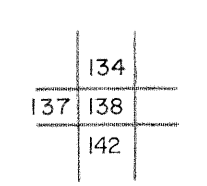
Legend

Property line	—	Original lot line	- - - -
Edge of pavement or roadway	— — — —	Dead lot number	(15)
Corporation line	— · — · —	Parcel or index number	(2)
District line	- - - -	Improvement	○
County line	- - - -	Railroad	— + — + —

Revisions

1	3-1-64	9	SLS INC.	11/12/99	DSW	17
2	RHODE MAR 75 PAM	10	ESI	2/1/02	REK	18
3	Revised to 7-1-81	11				19
4	To July 1, 1985 C.P.	12				20
5	OGIS 10/23/92 SAJ	13				21
6	OGIS 2/20/94 DSH	14				22
7	O.G.I.S 9-20-95 J.E.B	15				23
8		16				24

KEY MAP



WYOMING COUNTY
STATE OF WEST VIRGINIA
Office of Assessor

DISTRICT
SLAB FORK

SHEET NO: 138

Date, Aerial Photography: November, 1962 Date, Map: April, 1963
Photo No: _____ Scale: 1" = 400'

For Tax Purposes Only
Prepared by
MICHAEL BAKER, JR., INC.
Consulting Engineers
Rochester, Pennsylvania