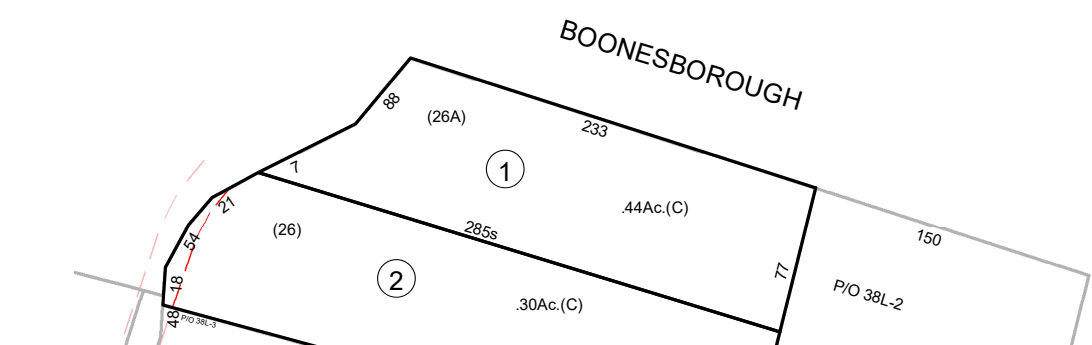


SEE MAP 38



<div>Prepared By The Office Of The Fayette County Assessor 100 Church Street Fayetteville, WV 25840 FOR TAX PURPOSES ONLY</div>	DISCLAIMER	LEGEND		REVISIONS		RESTRICTIONS	MAP KEY		<div>STATE OF WEST VIRGINIA FAYETTE COUNTY FAYETTEVILLE, WEST VIRGINIA Coordinate System: NAD 1983, WV State Plane South</div>	<div><div></div><div>VALLEY DISTRICT MAP 38G</div><div>Map Date: 9/21/2023 Scale: 1 inch = 100 feet</div></div>	
	<div>This product is for tax purposes only and was not prepared for, nor is it suitable for, legal, engineering, or surveying purposes. Users of this information should review individual parcel records including deeds, survey maps or plats, and legal property descriptions for definitive parcel location information. This map is not a valid survey plat and the data on this map does not imply any official status to such data. The State of West Virginia and county assessor's office assume no liability that might result from the use of this map.</div>	Property Line	<div></div>	Deed Lot Number	(15)		<div>All tax maps created under the provisions of reappraisal legislation are the property of the Assessor of Fayette County, West Virginia and the reproduction, copying, modification, distribution, or sale of such tax maps or any copies thereof without the written permission of the Fayette County Assessor is prohibited by law.</div>	03-30R			
		Roadway	<div></div>	Parcel or Index Number	15			03-38C			
		Water	<div></div>	Improvement	<div></div>			03-38F			03-38G
		District/Corporation Line	<div></div>	Railroad	<div></div>			03-38K			03-38L
County Line	<div></div>	Scaled Dimension	123s			03-38P					
Land Hook	<div></div>	Deeded Acreage	12.34Ac.								
Original Lot Line/Interior Tract	<div></div>	Calculated Area	12.34Ac.(C)								