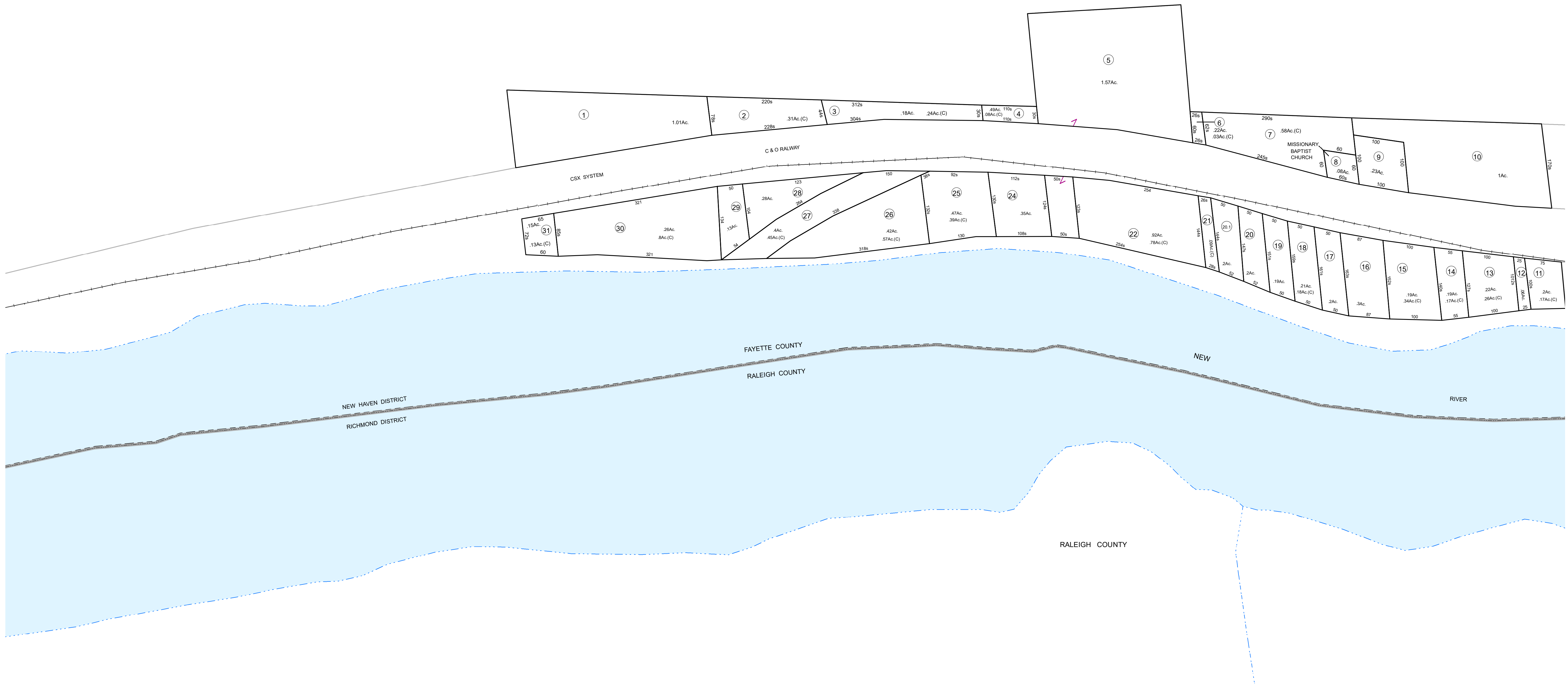


FLOATER
32 04Ac.

SEE MAP 139



Prepared By
The Office Of The
Fayette County Assessor
100 Church Street
Fayetteville, WV 25840
FOR TAX PURPOSES ONLY

DISCLAIMER

This product is for tax purposes only and was not prepared for, nor is it suitable for, legal, engineering, or surveying purposes. Users of this information should review individual parcel records including deeds, survey maps or plats, and legal property descriptions for definitive parcel location information. This map is not a valid survey plat and the data on this map does not imply any official status to such data. The State of West Virginia and county assessor's office assume no liability that might result from the use of this map.

LEGEND

Property Line
Roadway
Water
District/Corporation Line
County Line
Land Hook
Original Lot Line/Interior Tract

Deed Lot Number
Parcel or Index Number
Improvement
Railroad
Scaled Dimension
Deeded Acreage
Calculated Area

(15)
15
123s
12.34Ac.
12.34Ac.(C)

REVISIONS

RESTRICTIONS

All tax maps created under the provisions of reappraisal legislation are the property of the Assessor of Fayette County, West Virginia and the reproduction, copying, modification, distribution, or sale of such tax maps or any copies thereof without the written permission of the Fayette County Assessor is prohibited by law.

MAP KEY

01-139C 01-139D

STATE OF WEST VIRGINIA
FAYETTE COUNTY
FAYETTEVILLE, WEST VIRGINIA
Coordinate System: NAD 1983, WV State Plane South

**NEW HAVEN
DISTRICT
MAP 139C**
Map Date: 8/30/2023
Scale: 1inch = 100 feet